

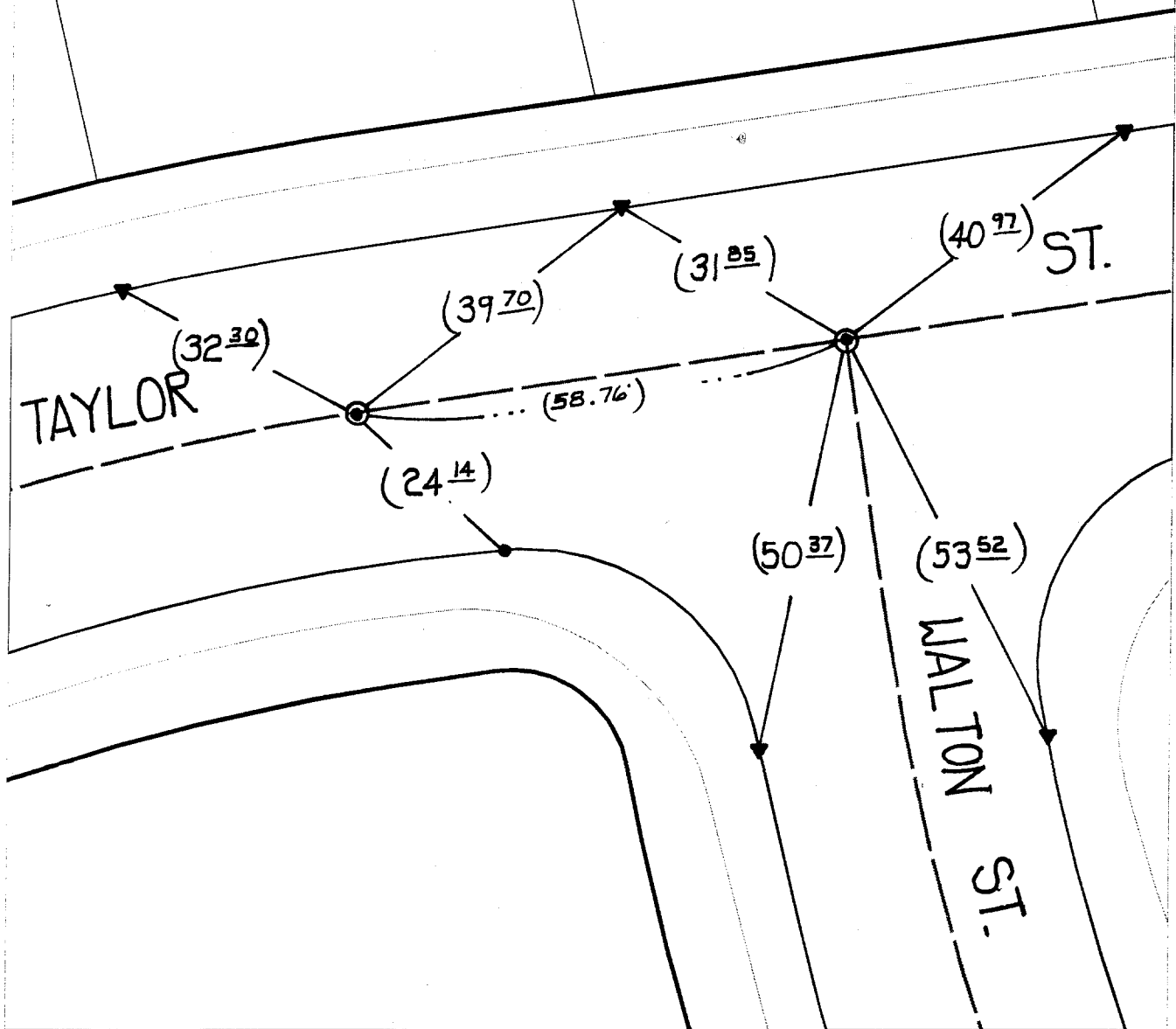
SWING TIES

NOTE:

- ⊙ FD. 1" IP W/RCE 862
~~TAG FLUSH~~
- () REC. DIST. PER J.F.D.
FB 1021/118 DATED 6-8-77
- ⊙ SET P.K. & CITY ENGR.
TAG 6/26/00

HISTORICAL DATA

J.F.D. FB 1021/118
DATE 6-8-77



- × FD. Ramset Nail on T/C
- FD. "C" Nail on T/C

- FD. LD. & TK. on T/C
- Set LD. & TK. on T/C

Street:

TAYLOR ST.
7707 TIE

X-Street:
OFFICIAL USE ONLY

WALTON ST.

Scale: 1" = 20'

Date: 11/23/99

Drawn by: survey

W.O.:

F.B.:

OFFICIAL TIE PLAT CITY OF RIVERSIDE

These ties are for the purpose of perpetuating the found monumentation. No claim is made as to the relationship of the points or lines shown hereon to true boundary locations.



Sheet 1 of 1

File No.: