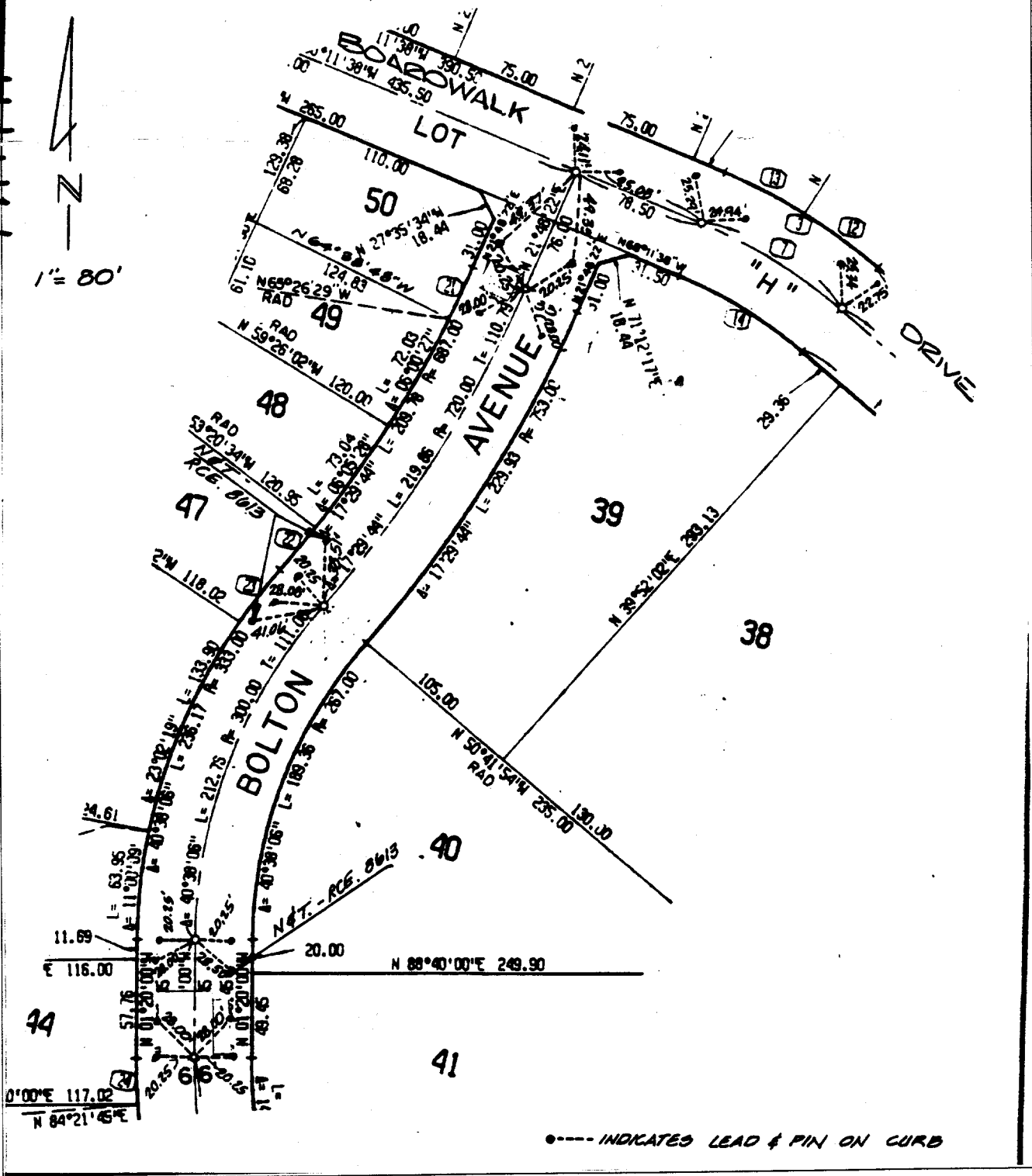


311111

Street: BOLTON AVE
771.71F

X-Street: BOARDWALK
OFFICIAL USE ONLY



----- INDICATES LEAD & PIN ON CURB

- × FD. Ramset Nail on T/C
- FD. LD. & TK. on T/C
- FD. "C" Nail on T/C
- Set LD. & TK. on T/C

Scale:
Date:
Drawn by:
W.O.:
F.B.:

OFFICIAL TIE PLAT
CITY OF RIVERSIDE

These ties are for the purpose of perpetuating the found monumentation. No claim is made as to the relationship of the points or lines shown hereon to true boundary locations.

TR. NO. 7925

Sheet **13** of 14

File No.: