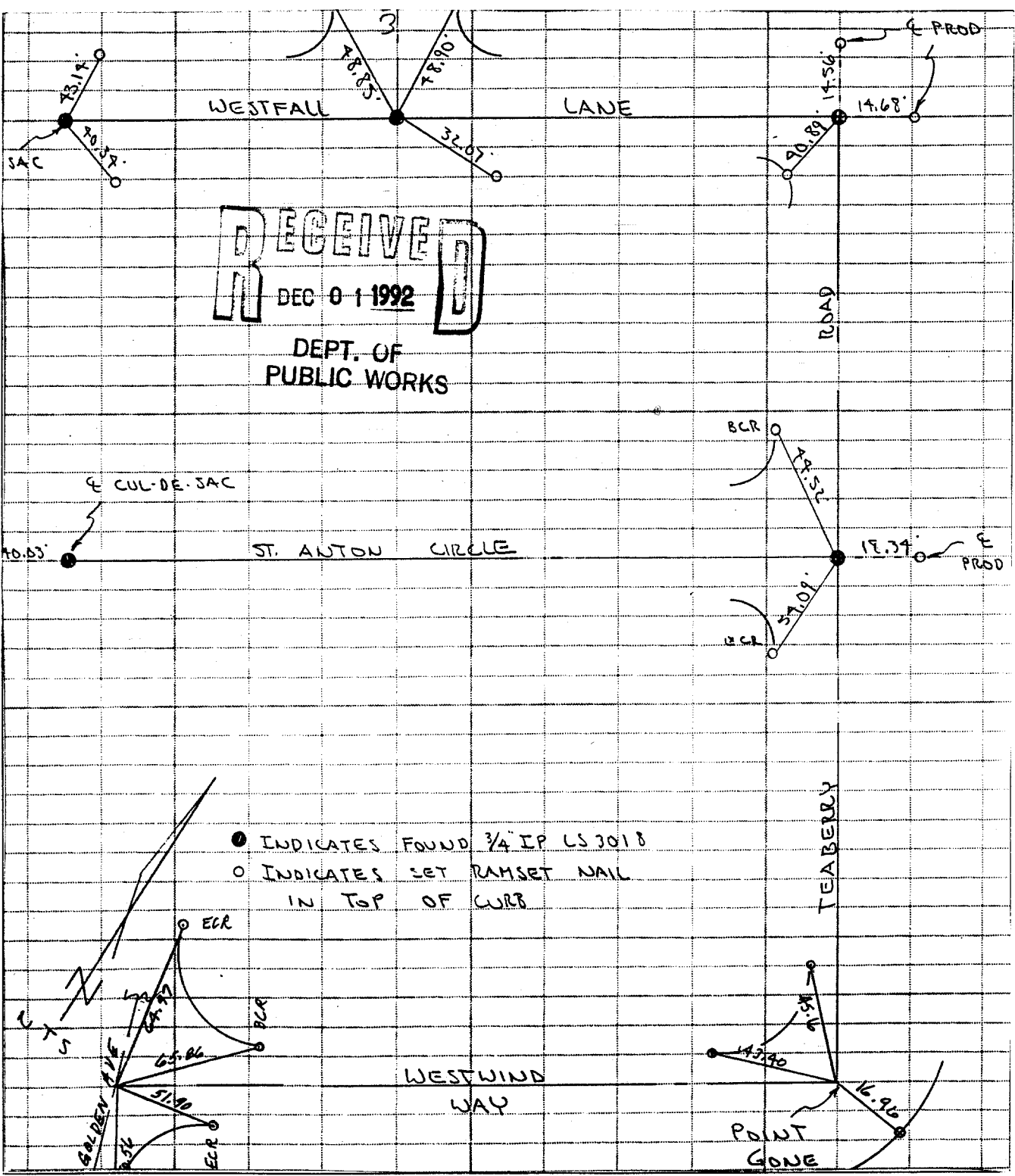


Street: **TEABERRY ROAD**

7712.71E

X-Street: **WESTWIND WAY**
OFFICIAL USE ONLY



● INDICATES FOUND 3/4" IP LS 3018
○ INDICATES SET RAMSET NAIL
IN TOP OF CURB

- ✕ FD. Ramset Nail on T/C
- FD. LD. & TK. on T/C
- FD. "C" Nail on T/C
- Set LD. & TK. on T/C

Scale:
Date: 7/16/81
Drawn by:
W.O.:
F.B.: 80-5112-90

OFFICIAL TIE PLAT

CITY OF RIVERSIDE

These ties are for the purpose of perpetuating the found monumentation. No claim is made as to the relationship of the points or lines shown hereon to true boundary locations.

TRACT 9057-2
Sheet 1 of 1
File No.: