

Street: TEMECULA PLACE  
7215-71E

X-Street: CUL-DE-SAC  
 OFFICIAL USE ONLY

SURVEY OF TRACT TRACT 4148

DATE NOV-23-71 JO. 70-242

70-239

PARTY NO. AND MEMBERS

Boiley Diaz Evans

F.B. 1018 PAGE 101

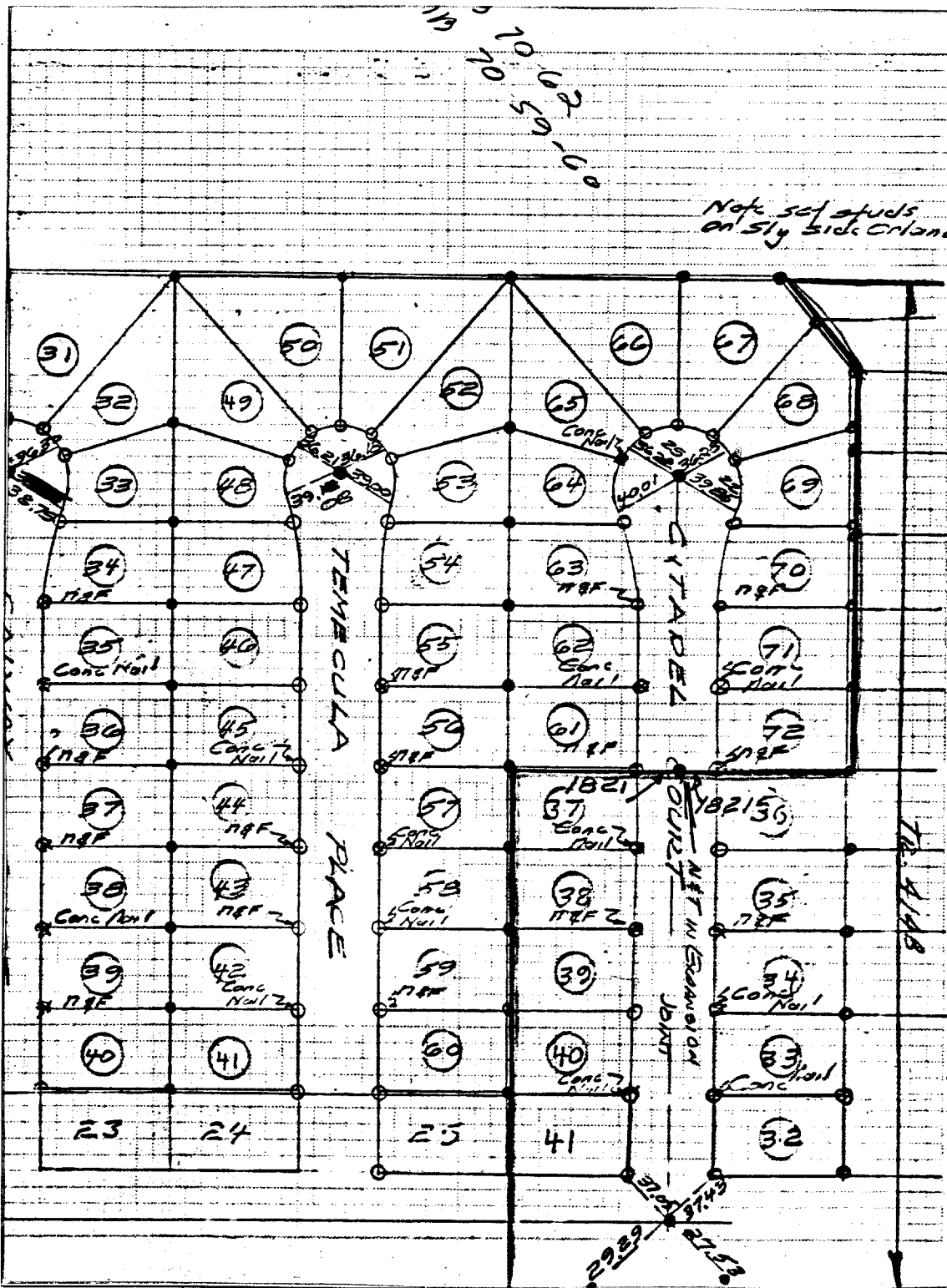
M.S.:

NOT CALC'D BY:

CALCS CHECKED BY:

MAP NO.:

TEMECULA PL.



- ✕ FD. Ramset Nail on T/C
- FD. LD. & TK. on T/C
- FD. "C" Nail on T/C
- Set LD. & TK. on T/C

Scale:  
 Date: Nov 23, 71  
 Drawn by:  
 W.O.:  
 F.B.: 1018 P.101

## OFFICIAL TIE PLAT

### CITY OF RIVERSIDE

*These ties are for the purpose of perpetuating the found monumentation. No claim is made as to the relationship of the points or lines shown hereon to true boundary locations.*

TRACT 4148

Sheet 1 of 1  
 File No.: