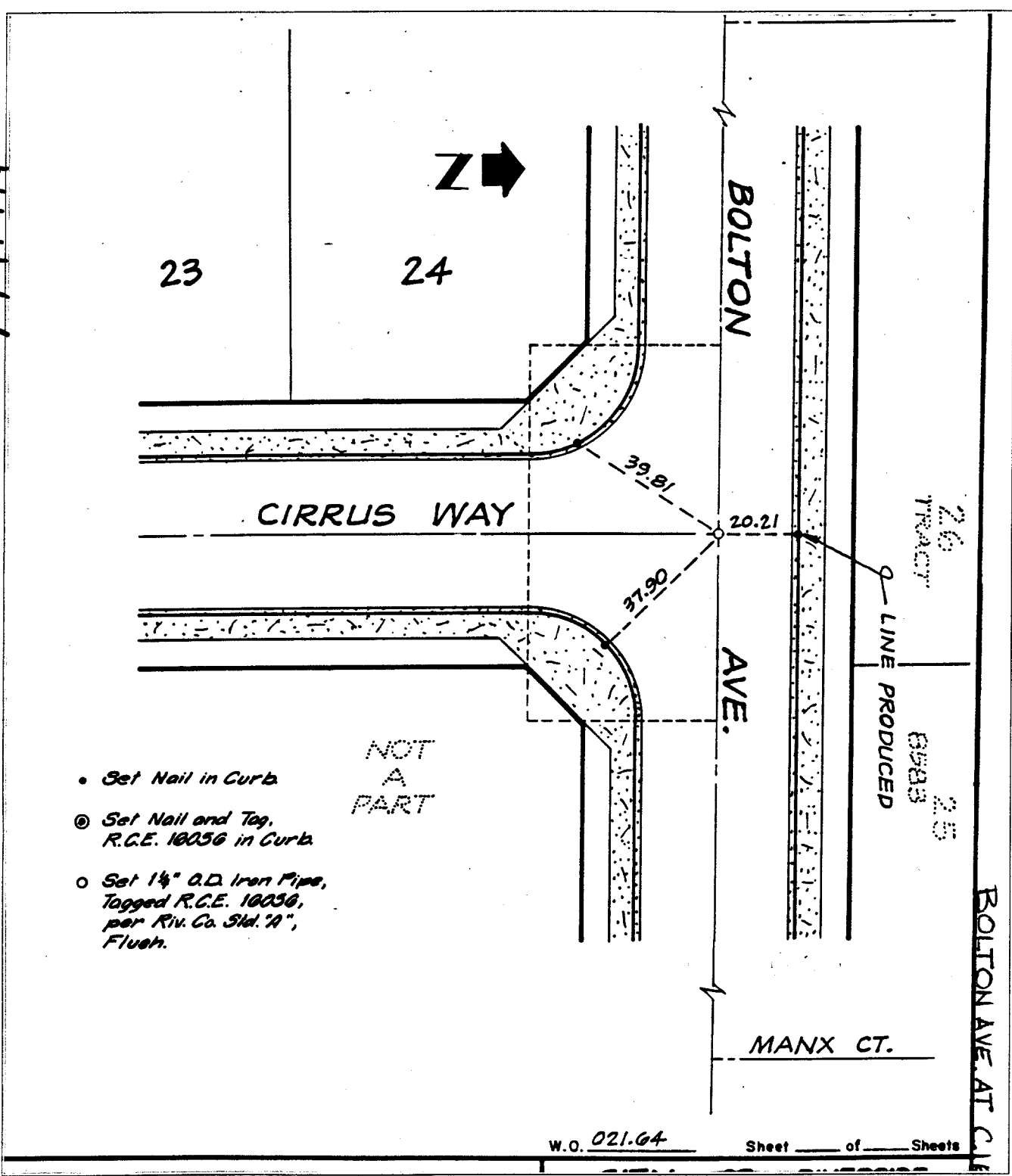


Street: BOLTON AVE

OFFICIAL USE ONLY

X-Street: CIRRUS WAY

774. PLL



- Set Nail in Curb
- ⊙ Set Nail and Tag, R.C.E. 10056 in Curb
- Set 1 1/2" O.D. Iron Pipe, Tagged R.C.E. 10056, per Riv. Co. Std. "A", Flush.

NOT A PART

- ✕ FD. Ramset Nail on T/C
- FD. "C" Nail on T/C

- FD. LD. & TK. on T/C
- Set LD. & TK. on T/C

Scale:  
 Date:  
 Drawn by:  
 W.O.:  
 F.B.:

## OFFICIAL TIE PLAT CITY OF RIVERSIDE

*These ties are for the purpose of perpetuating the found monumentation. No claim is made as to the relationship of the points or lines shown hereon to true boundary locations.*

TRACT 10818

---

Sheet 1 of 1

File No.: