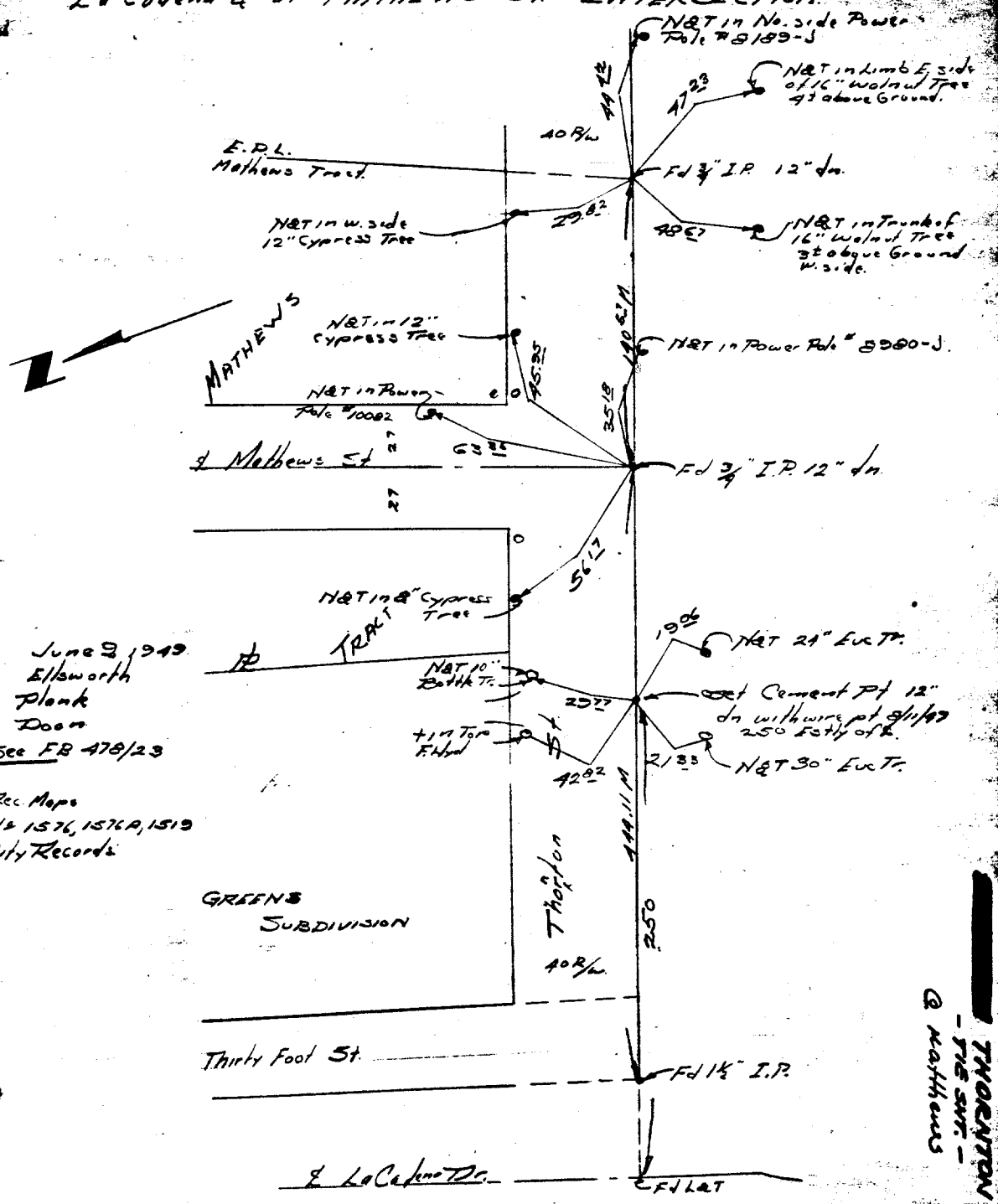


Street: MATHEWS ST  
 7745.FIF  
 X-Street: THORNTON  
 OFFICIAL USE ONLY

THORNTON STREET (Riverside St) East from  
 La Codena & at MATHEWS ST INTERSECTION.



June 9, 1949  
 Ellsworth  
 Plank  
 Doon  
 See FB 478/23  
 Rec. Maps  
 N# 1576, 1576A, 1519  
 City Records

- ✕ FD. Ramset Nail on T/C
- FD. LD. & TK. on T/C
- FD. "C" Nail on T/C
- Set LD. & TK. on T/C

Scale:  
 Date:  
 Drawn by:  
 W.O.:  
 F.B.:

**OFFICIAL TIE PLAT**  
**CITY OF RIVERSIDE**

These ties are for the purpose of perpetuating the found  
 monumentation. No claim is made as to the relationship of  
 the points or lines shown hereon to true boundary locations.

Sheet 1 of 1  
 File No.: