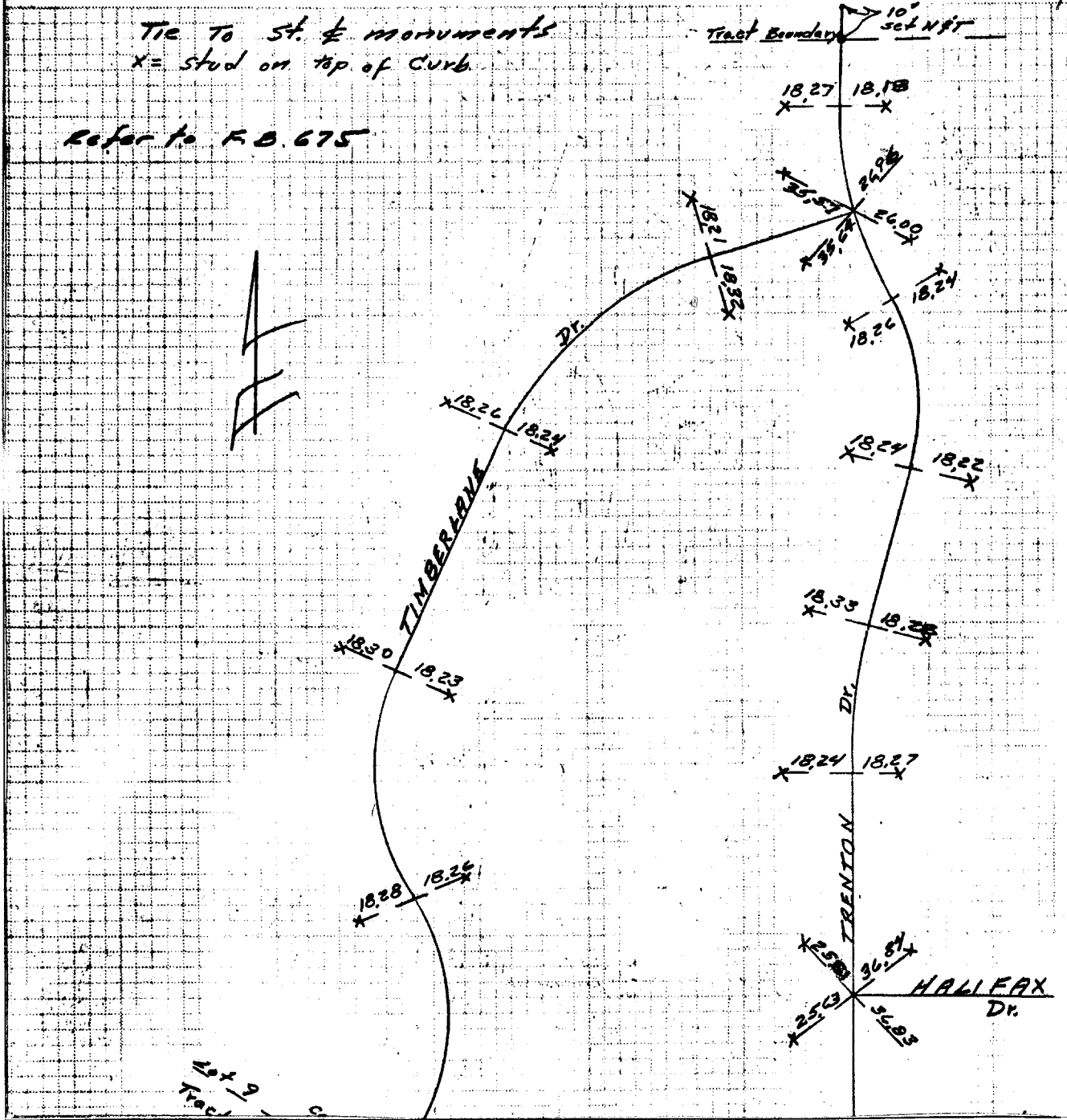


68-258 SURVEY OF TRACT No. 3825 M.B. 70/11 DATE 3-17-71
 1014 PAGE 151 PARTY NO AND MEMBERS Joe Aguilera H. Evans J.J. Aguilera

NOTES CALC'D BY CALC'S CHECKED BY MAP NO WEATHER

Tie to st. & monuments
 X = stud on top of curb

Refer to F.B. 675



- ✕ FD. Ramset Nail on T/C
- FD. LD. & TK. on T/C
- FD. "C" Nail on T/C
- Set LD. & TK. on T/C

Street: **TIMBERLAKE DRIVE**
 7767. TIF
 X-Street: **TRENTON**
 OFFICIAL USE ONLY

Scale:
 Date:
 Drawn by:
 W.O.:
 F.B.: 1014

OFFICIAL TIE PLAT
CITY OF RIVERSIDE

These ties are for the purpose of perpetuating the found monumentation. No claim is made as to the relationship of the points or lines shown hereon to true boundary locations.

TRACT 3825

Sheet 1 of 1
 File No.: