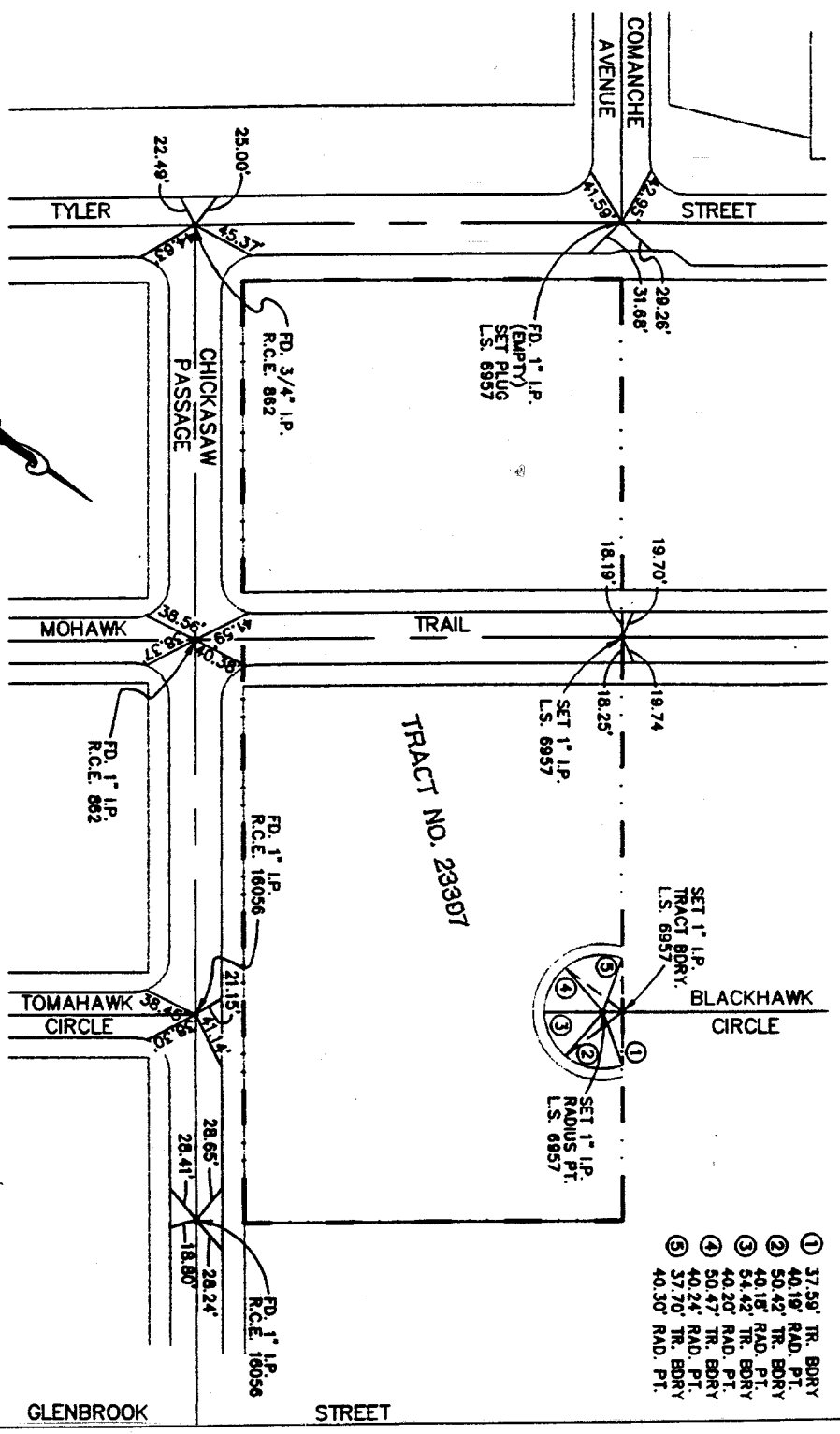


Street: **TOMAHAWK CIRCLE**
7777, TIE

X-Street: **CHICKASAW PASSAGE**
 OFFICIAL USE ONLY



TOMAHAWK CIRCLE
CHICKASAW PASSAGE

- ① 37.59' TR. BDRY
- ② 40.19' RAD. PT.
- ③ 50.42' TR. BDRY
- ④ 40.15' RAD. PT.
- ⑤ 54.42' TR. BDRY
- ⑥ 40.20' RAD. PT.
- ⑦ 50.47' TR. BDRY
- ⑧ 40.24' RAD. PT.
- ⑨ 37.70' TR. BDRY
- ⑩ 40.30' RAD. PT.

SCALE: 1" = 100'

NOTE:
 ALL TIE POINTS ARE RAMSET NAILS IN T.C.

CROUSE/BEERS & ASSOCIATES, INC.
 Civil Engineering x Surveying x Planning
 7700 HAMNER AVENUE, SUITE 104
 NORCO, CA 91760 (909) 736-2040 FAX (909) 736-6292

TRACT NO. 23397 - C.L. TIES

- ✕ FD. Ramset Nail on T/C
- FD. LD. & TK. on T/C
- FD. "C" Nail on T/C
- Set LD. & TK. on T/C

Scale: _____
 Date: _____
 Drawn by: _____
 W.O.: _____
 F.B.: _____

OFFICIAL TIE PLAT
CITY OF RIVERSIDE

These ties are for the purpose of perpetuating the found monumentation. No claim is made as to the relationship of the points or lines shown hereon to true boundary locations.

TRACT 23397
 Sheet 1 of 1
 File No.: _____