

SCALE: N.T.S.
 DATE: 3-12-97
 DR. BY: FINNEY, J.
 W.O.:
 F.B.:

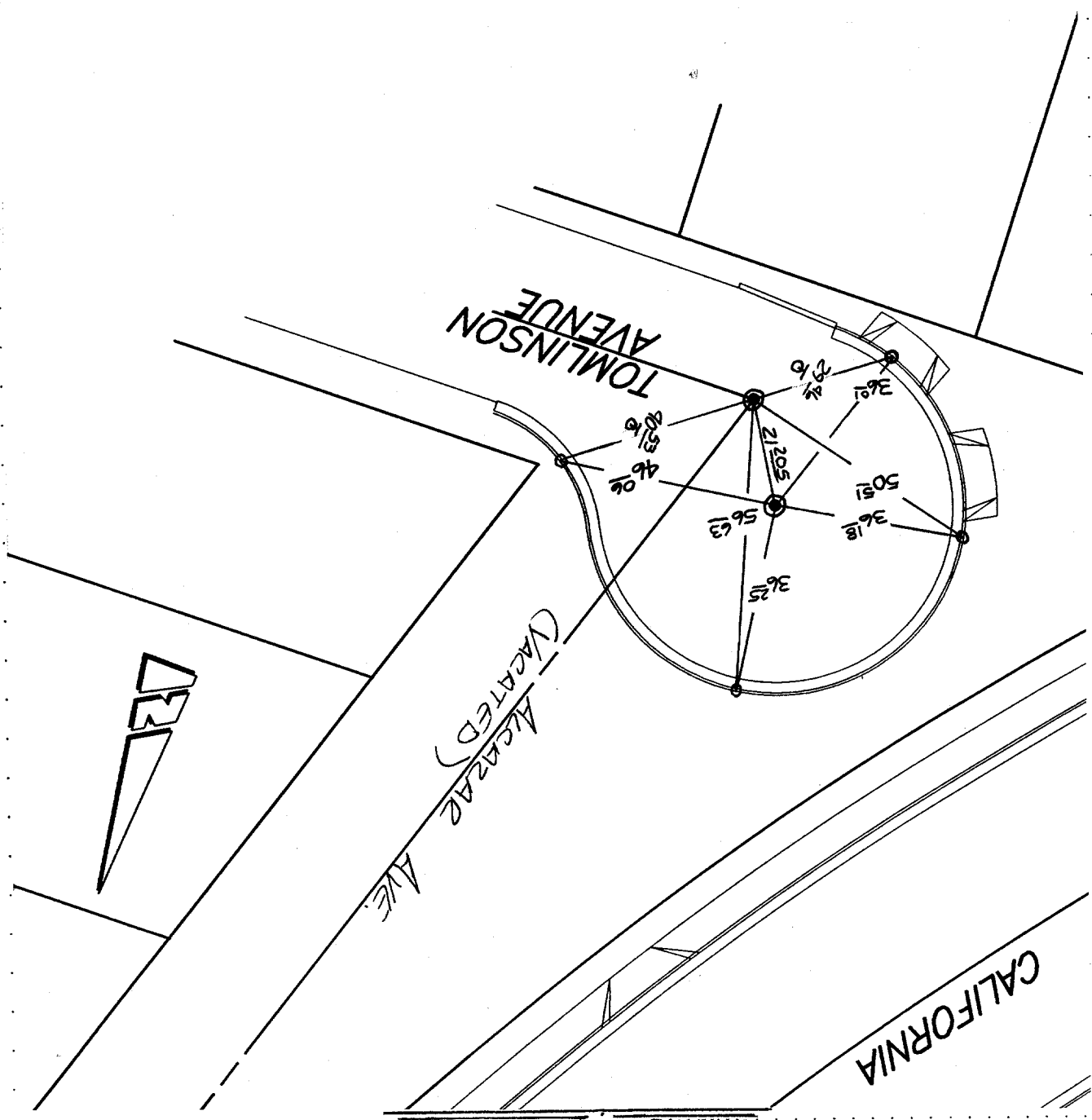
OFFICIAL TIE PLAT
 CITY OF RIVERSIDE

FILE NO.:
 OF 1 SHEETS
 SHEET 1

These ties are for the purpose of perpetuating the found monumentation. No claim is made as to the relationship of the points or lines shown hereon to true boundary locations.

- SET PK. & CITY ENGR. TIES
- FD. LD. & TK. on T/C
- FD. "C" Nail on T/C
- SET LD. & TK. on T/C

STREET TOMLINSON AVE
7785, 711 F
 X-STREET CUL-DE-SAC
 OFFICE USE ONLY



TRANSIT & SWING TIES