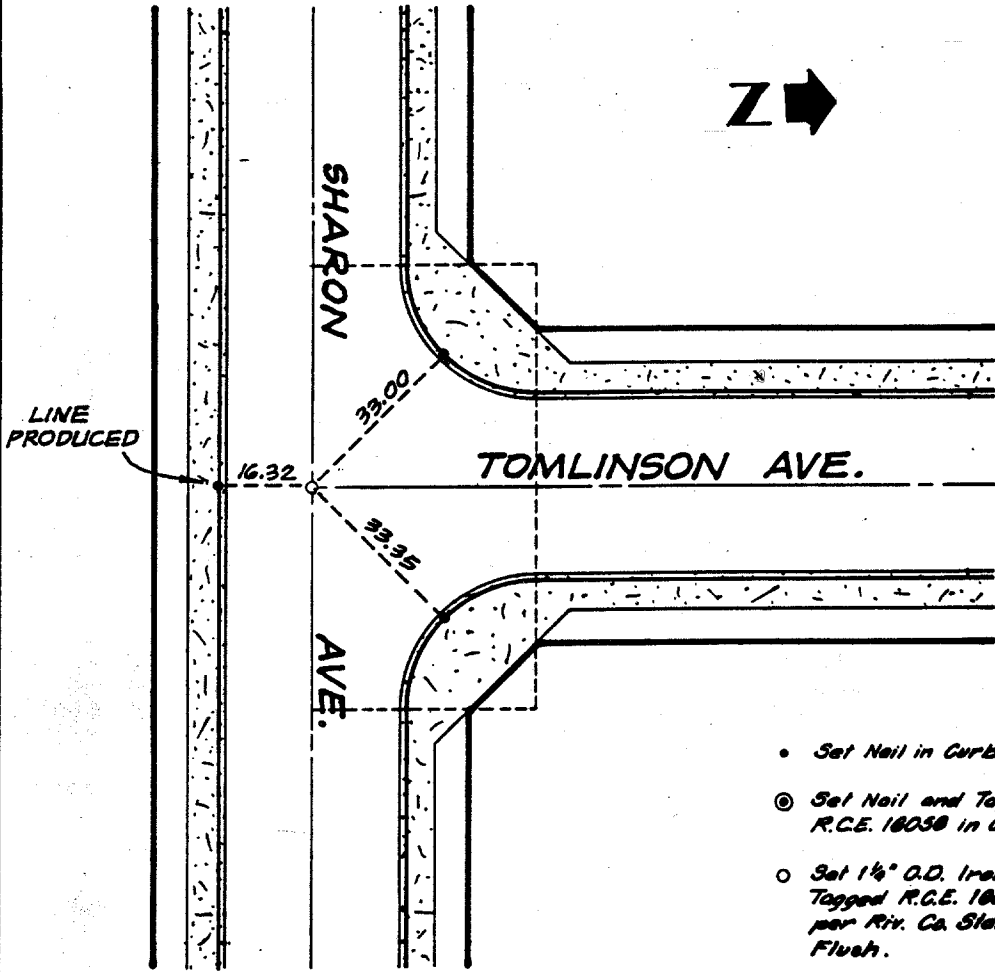


Street: TOMLINSON AVE  
7788 TIE

X-Street: SHARON AVE  
OFFICIAL USE ONLY



- Set Nail in Curb.
- ⊙ Set Nail and Tag, R.C.E. 10030 in Curb.
- Set 1 1/2" O.D. Iron Pipe, Tagged R.C.E. 10030, per Riv. Co. Std. 20", Flush.

AT SHARON AVE

W.O. 021.64 Sheet \_\_\_\_\_ of \_\_\_\_\_ Sheets

**L A WAINSCOTT & ASSOCIATES**  
 CIVIL ENGINEERS  
 GRAND TERRACE, CALIFORNIA  
 (714) 824-1775

**CITY OF RIVERSIDE**  
**TRACT No. 10818**  
 M.B. 138/30-32

- ×** FD. Ramset Nail on T/C
- FD. LD. & TK. on T/C
- FD. "C" Nail on T/C
- Set LD. & TK. on T/C

Scale:  
 Date:  
 Drawn by:  
 W.O.: 021.64  
 F.B.:

**OFFICIAL TIE PLAT**  
**CITY OF RIVERSIDE**

*These ties are for the purpose of perpetuating the found monumentation. No claim is made as to the relationship of the points or lines shown hereon to true boundary locations.*

Sheet 1 of 1  
 File No.: