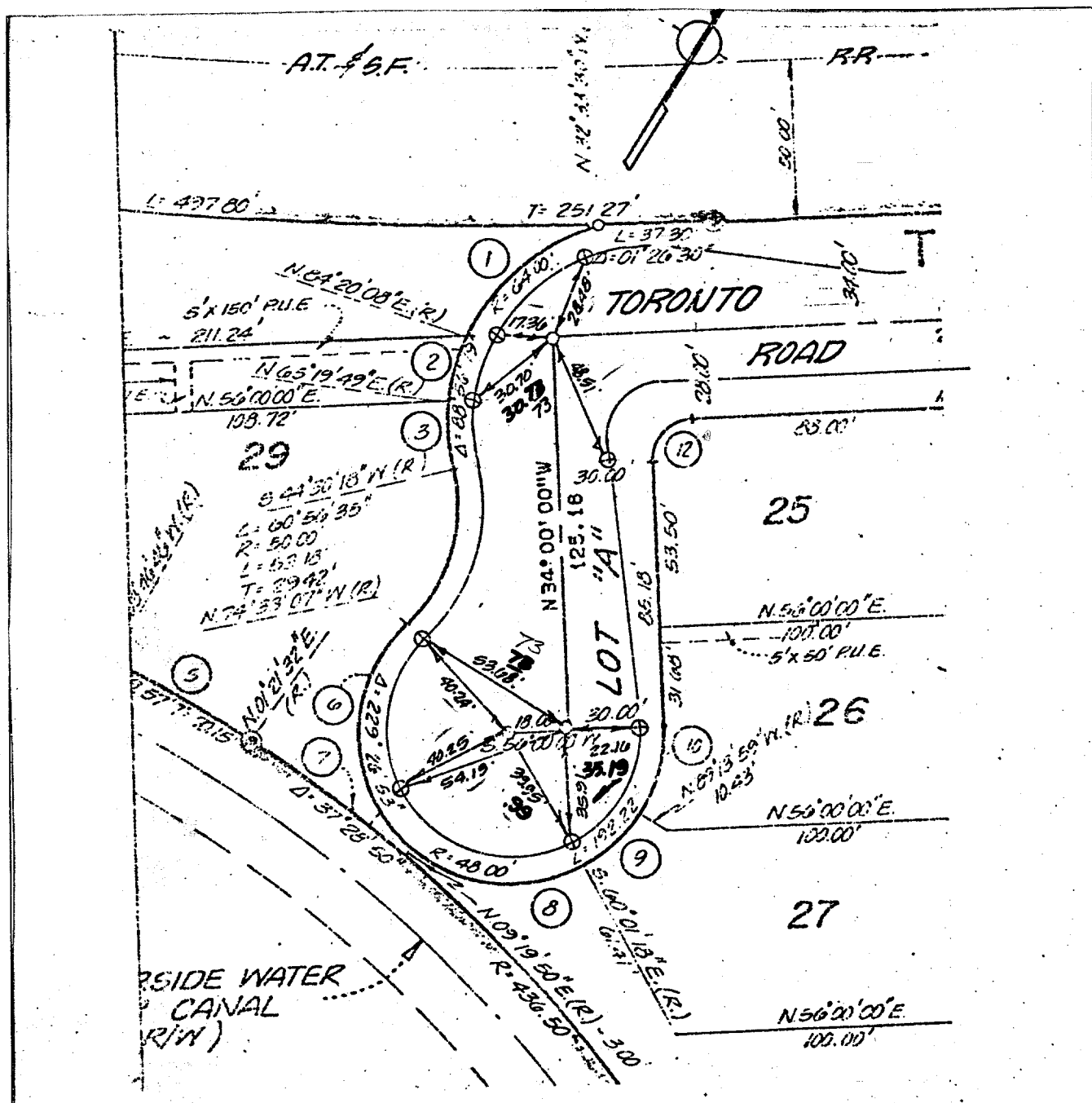


Street: TORONTO ROAD
7797, 71E

X-Street: " LOT "A"
OFFICIAL USE ONLY



DAVIDSON ASSOC.

- ⊗ Indicates Riverside County Standard No. 903 Type "B" Monument (1/2" Brass Cap Stamped R.C.E. 862).
- ⊙ Indicates Riverside County Standard No. 902 Type "A" Monument (1/4" Iron Pipe Tagged R.C.E. 862).
- ⊕ Indicates Set Nail & Tagged R.C.E. 862 in Curb.
- ⊖ Indicates Set Nail in Curb.

- ⊗ FD. Ramset Nail on T/C
- ⊙ FD. LD. & TK. on T/C
- ⊕ FD. "C" Nail on T/C
- ⊖ Set LD. & TK. on T/C

Scale: 1" = 50'
Date: SEPT 1977
Drawn by:
W.O.:
F.B.:

OFFICIAL TIE PLAT

CITY OF RIVERSIDE

These ties are for the purpose of perpetuating the found monumentation. No claim is made as to the relationship of the points or lines shown hereon to true boundary locations.

TRACT 7675

Sheet 5 of 5
File No.: