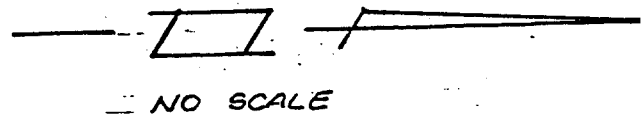


Street: BOLTON AVE

OFFICIAL USE ONLY

X-Street: GILES COURT

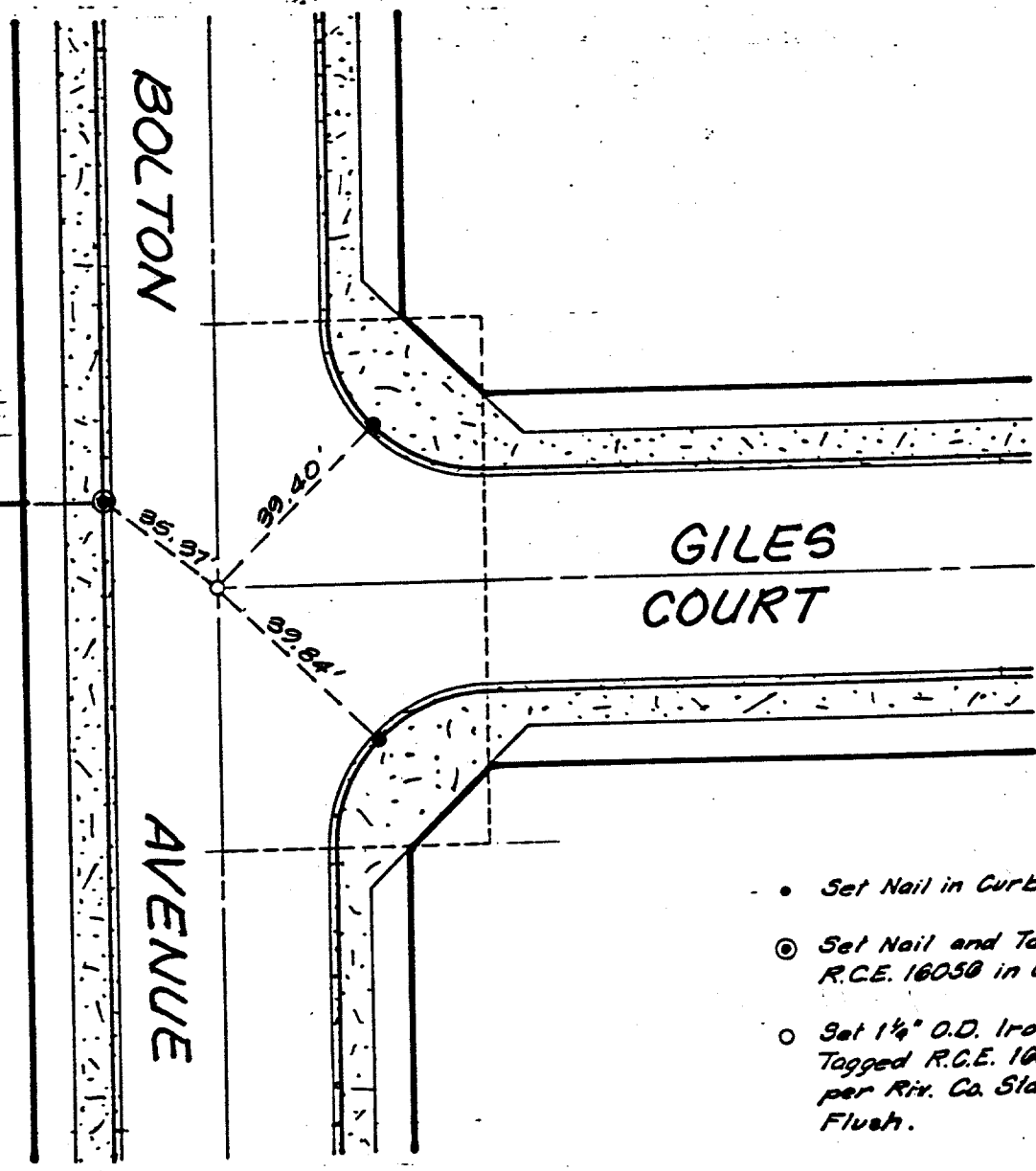


F.I.T. 08L

LOT
A
PART

LOT
28

TRACT
10818



- Set Nail in Curb.
- ⊙ Set Nail and Tag, R.C.E. 16050 in Curb.
- Set 1 1/4" O.D. Iron Pipe Tagged R.C.E. 16050, per Riv. Co. Std. "A", Flush.

- ✕ FD. Ramset Nail on T/C
- FD. LD. & TK. on T/C
- FD. "C" Nail on T/C
- Set LD. & TK. on T/C

Scale: _____

Date: _____

Drawn by: _____

W.O.: _____

F.B.: _____

OFFICIAL TIE PLAT
CITY OF RIVERSIDE

These ties are for the purpose of perpetuating the found monumentation. No claim is made as to the relationship of the points or lines shown hereon to true boundary locations.

TRACT 8583

Sheet 1 of 1

File No.: _____