

F.B.:
W.O.:
Drawn by: scurtis ke

Date: 09/16/98
Scale: 1" = 20'

OFFICIAL TIE PLAT

CITY OF RIVERSIDE

These ties are for the purpose of perpetuating the found monumentation. No claim is made as to the relationship of the points or lines shown hereon to true boundary locations.

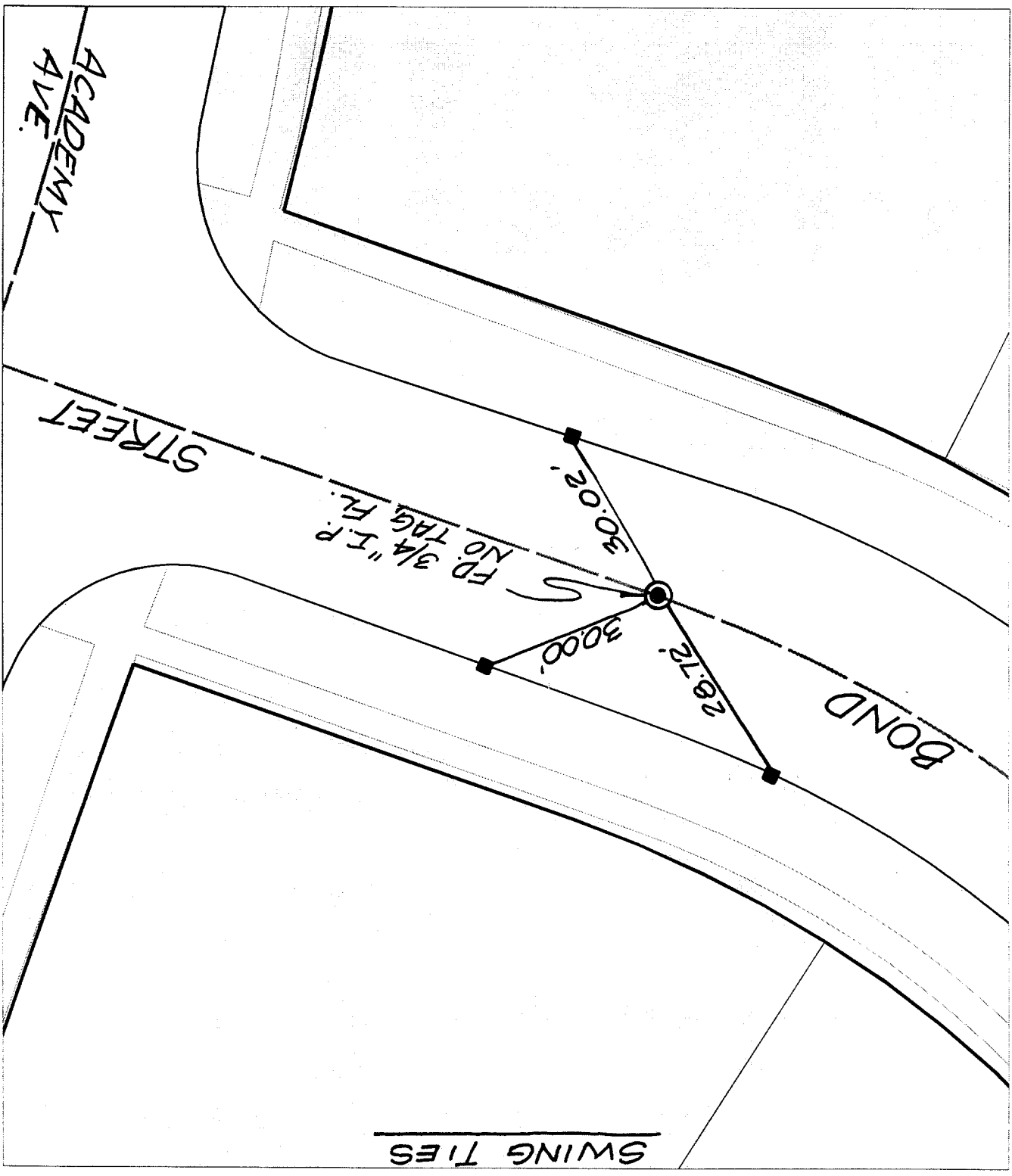
File No.:
Sheet 1 of 1



Street:

X-Street: BC NW'LY OF ACADEMY
OFFICIAL USE ONLY

- × FD. Ramset Nail on T/C
- FD. "C" Nail on T/C
- FD. LD. & TK. on T/C
- Set LD. & TK. on T/C



SWING TIES

ACADEMY AVE.

311:18L