

TIES - TRANSIT AVE

SHT. 1 OF 2

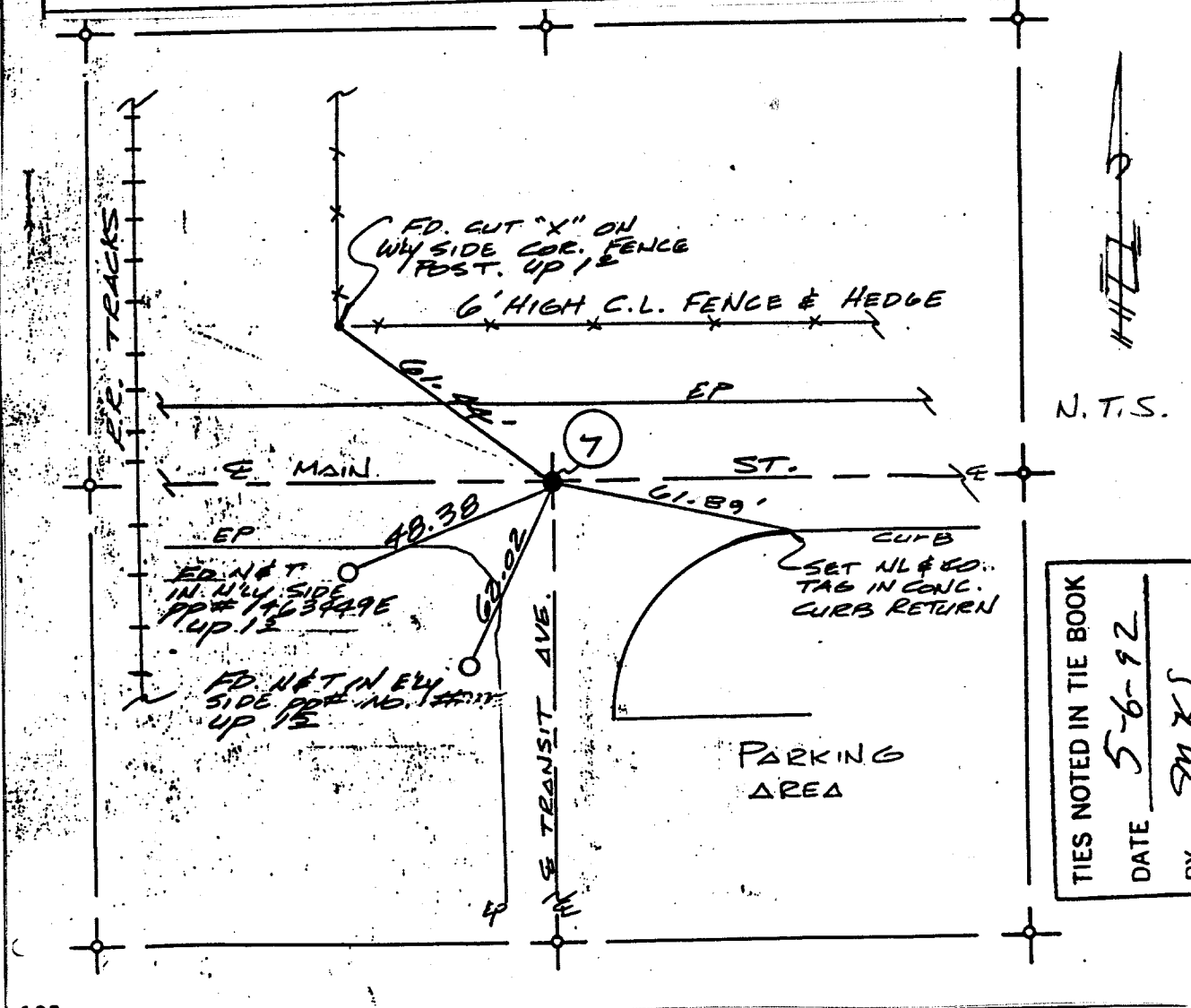
RIVERSIDE COUNTY SURVEY DEPARTMENT RECOVERY NOTES

FB 2168
5# 5861
165

SEC. 7 TWP. 25 RGE. 4 W TB

DATE 7-9-92 TEMP. W.O. NO. 090 0007
PARTY UPTON, BOWEN, COLANGELO AGENCY RIV. CO. SUR.

7 FD. 1 1/2" E.P. DN. 24" PER. 89B-J P.P. SET 2" X 2"
HUB W/ RIV. CO. SUR. TAG FL. W/ X-TIES.



- ✕ FD. Ramset Nail on T/C
- FD. LD. & TK. on T/C
- FD. "C" Nail on T/C
- Set LD. & TK. on T/C

Scale:
Date:
Drawn by:
W.O.:
F.B.:

OFFICIAL TIE PLAT

CITY OF RIVERSIDE

These ties are for the purpose of perpetuating the found monumentation. No claim is made as to the relationship of the points or lines shown hereon to true boundary locations.

Sheet 1 of 2
File No.:

Street: 7834.TIF TRANSIT AVE
X-Street: MAIN STREET
OFFICIAL USE ONLY