

J.F. Davidson Associates, Inc.
ENGINEERING PLANNING SURVEYING
ARCHITECTURE LANDSCAPE ARCHITECTURE

F.B. 10164/321

Y OF ETIES TRAUTWIEN RD.

DEC 10, '90

Regional Properties

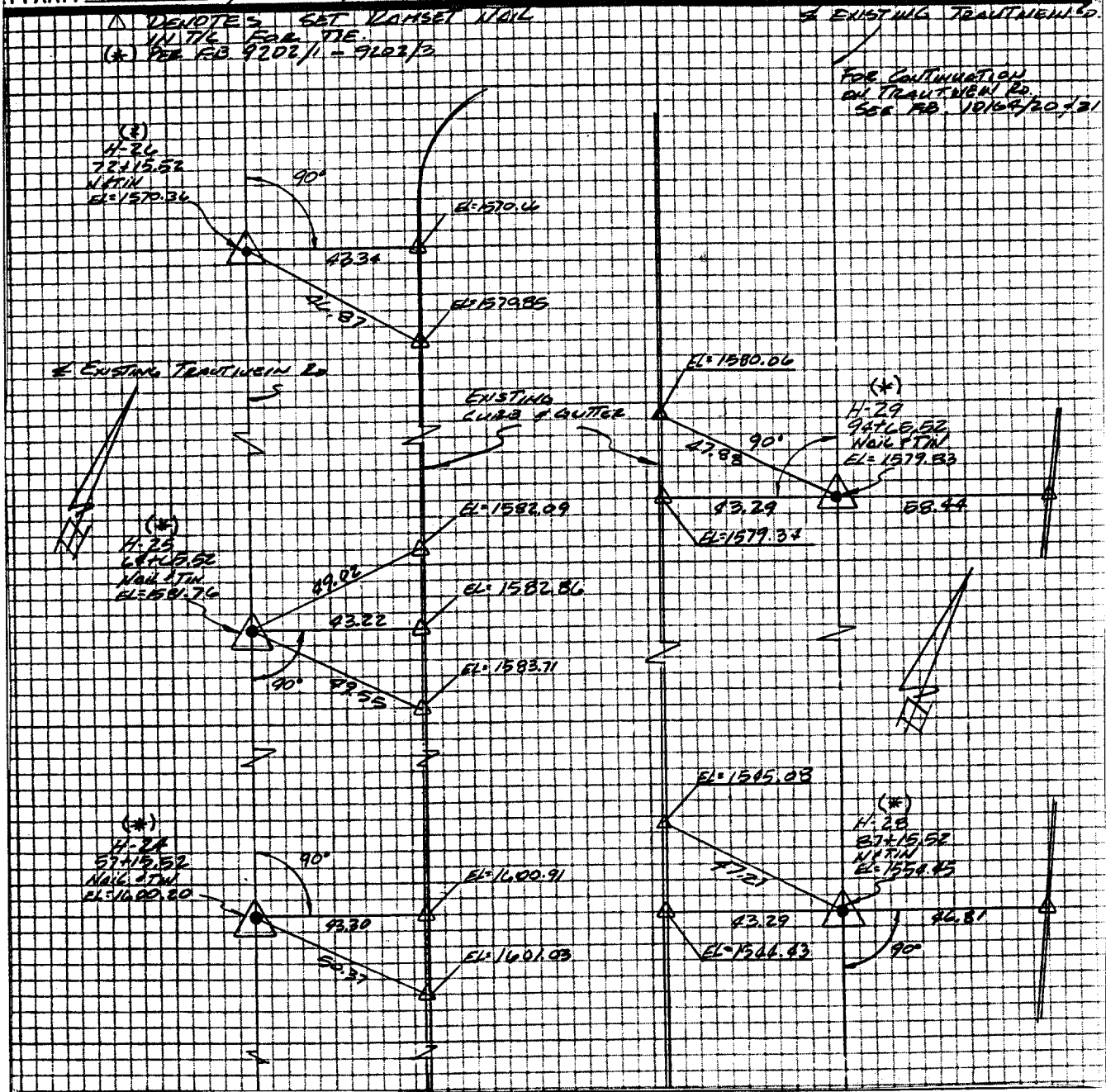
W.O. No. 10164

Date 12-05-90

Y PARTY T. BARRO, M=CHIEF, THEWELL

REF.

A.M.



× FD. Ramset Nail on T/C
■ FD. "C" Nail on T/C

● FD. LD. & TK. on T/C
○ Set LD. & TK. on T/C

Scale:

Date:

Drawn by:

W.O.:

F.B.:

OFFICIAL TIE PLAT CITY OF RIVERSIDE

These ties are for the purpose of perpetuating the found monumentation. No claim is made as to the relationship of the points or lines shown hereon to true boundary locations.

Sheet 1 of 1

File No.:

Street: TRAUTWIEN ROAD
7838.71E

X-Street: ETIES
OFFICIAL USE ONLY