

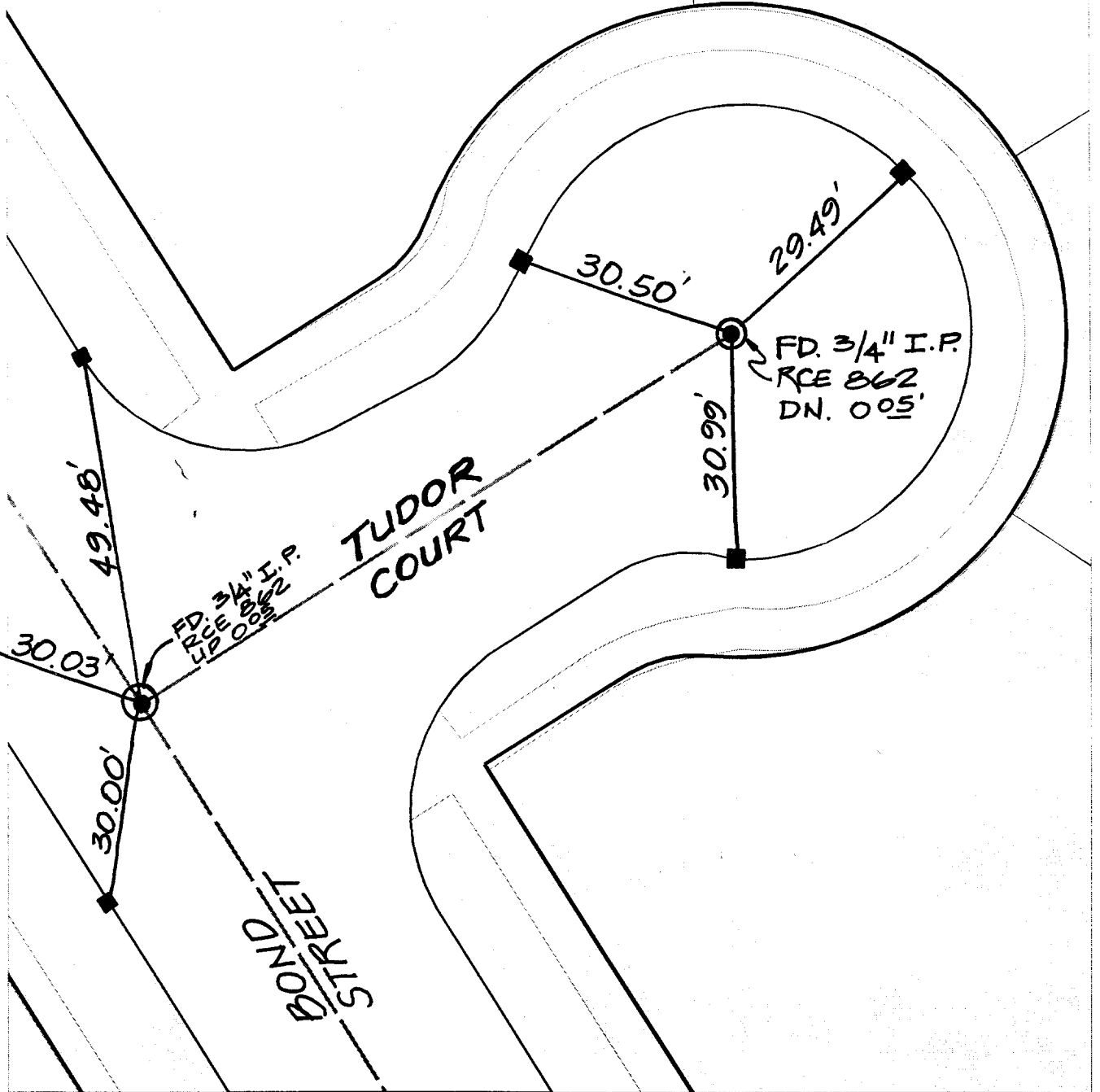
# SWING TIES

CUL-DE-SAC

X-Street:  
OFFICIAL USE ONLY

TUDOR COURT  
TUDOR CT.

Street:



- ✕ FD. Ramset Nail on T/C
- FD. LD. & TK. on T/C
- FD. "C" Nail on T/C
- Set LD. & TK. on T/C

Scale: 1" = 20'  
 Date: 09/16/98  
 Drawn by: scurtis, KB  
 W.O.:  
 F.B.:

## OFFICIAL TIE PLAT CITY OF RIVERSIDE



*These ties are for the purpose of perpetuating the found monumentation. No claim is made as to the relationship of the points or lines shown hereon to true boundary locations.*

Sheet 1 of 1  
 File No.:

785-TIE