

F.B.:  
W.O.:  
Drawn by: scurtis HJ  
Date: 08/28/98  
Scale: 1" = 20'

# OFFICIAL TIE PLAT

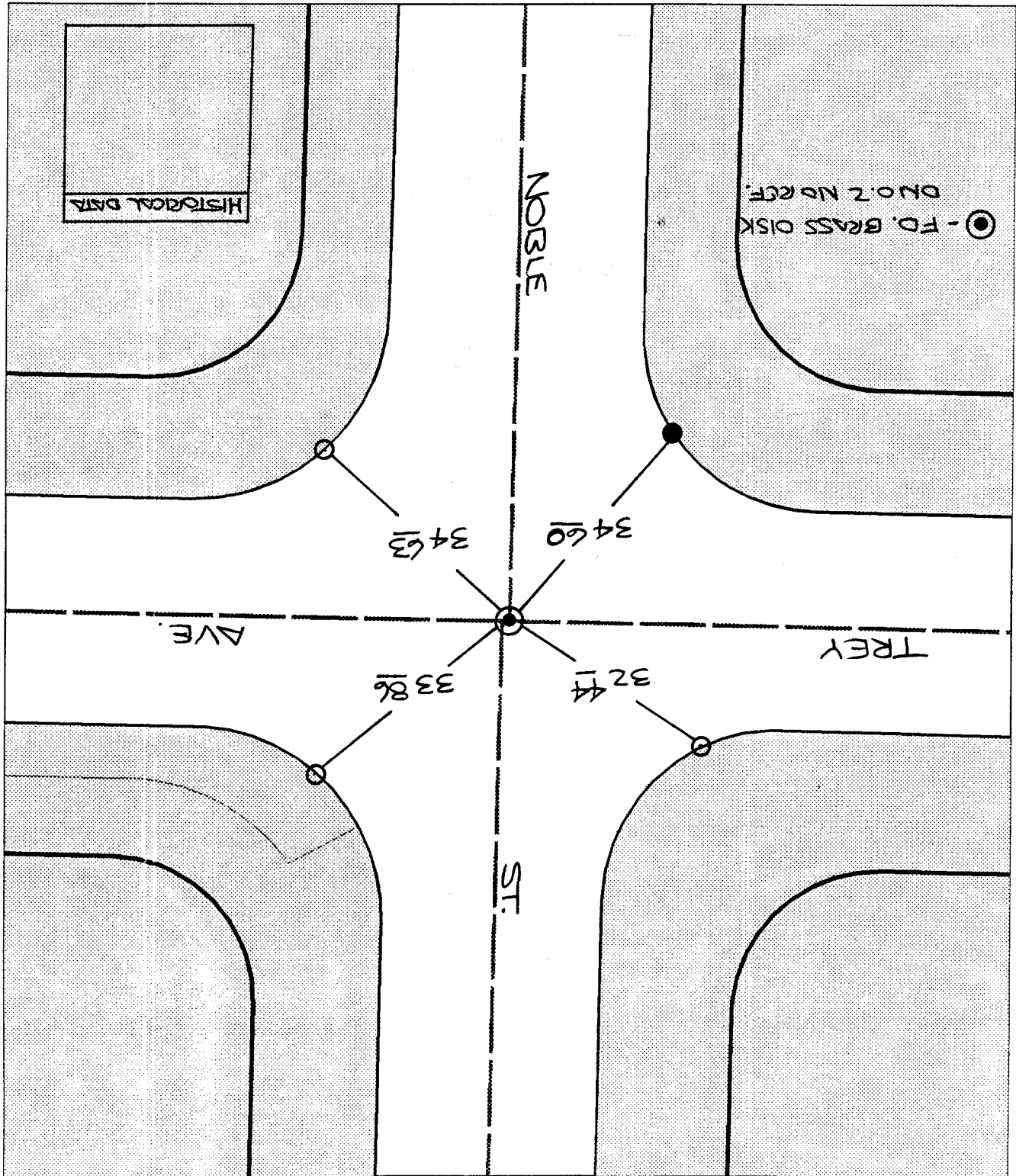
## CITY OF RIVERSIDE

These ties are for the purpose of perpetuating the found monumentation. No claim is made as to the relationship of the points or lines shown hereon to true boundary locations.

File No.:  
Sheet 1 of 1



- FD. LD. & TK. on T/C
- Set LD. & TK. on T/C
- FD. "C" Nail on T/C
- × FD. Ramset Nail on T/C



Street: 7864, T1/F  
NOBLE ST.  
X-Street: OFFICIAL USE ONLY  
TREY AVE.