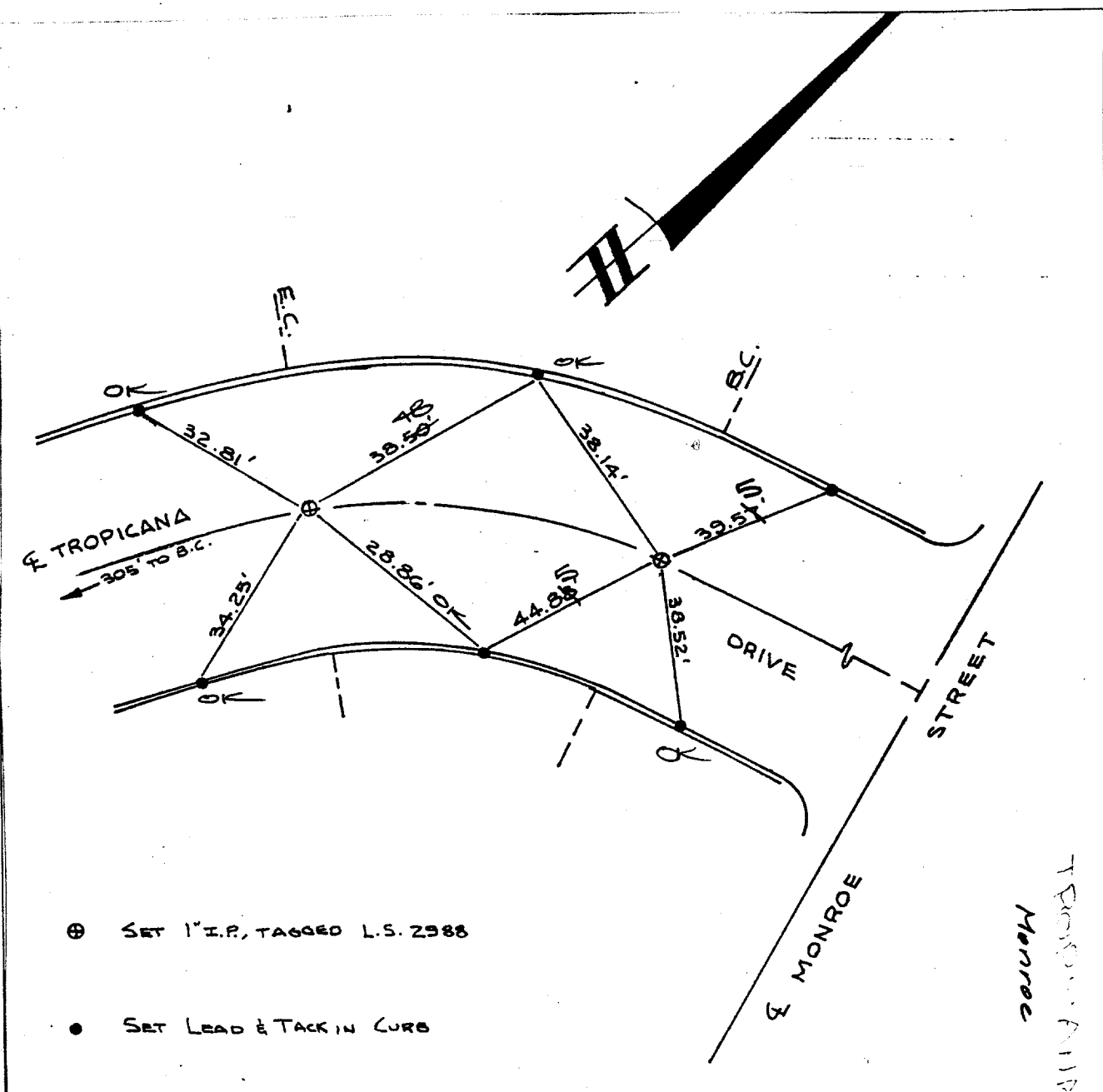


Street: TROPICANA DRIVE 7871 T/F
 X-Street: MONROE ST.
 OFFICIAL USE ONLY



- ⊕ SET 1" I.P., TAGGED L.S. 2988
- SET LEAD & TACK IN CURB

By: B.S.	ANACAL ENGINEERING CO. P.O. Box 3668 222 East Lincoln Avenue Anaheim, California 92803 (714) 774-1763	LOCATION: S/O LINCOLN W/O MONROE OWNER: SHEET NO. #6
Date: 2-28-74	F. B. # #4356	
SCALE:		

- ✕ FD. Ramset Nail on T/C
- FD. LD. & TK. on T/C
- FD. "C" Nail on T/C
- Set LD. & TK. on T/C

Scale:	OFFICIAL TIE PLAT CITY OF RIVERSIDE	TRACT 4356
Date:		
Drawn by:	<i>These ties are for the purpose of perpetuating the found monumentation. No claim is made as to the relationship of the points or lines shown hereon to true boundary locations.</i>	Sheet 1 of 1
W.O.:		File No.:
F.B.: 4356		