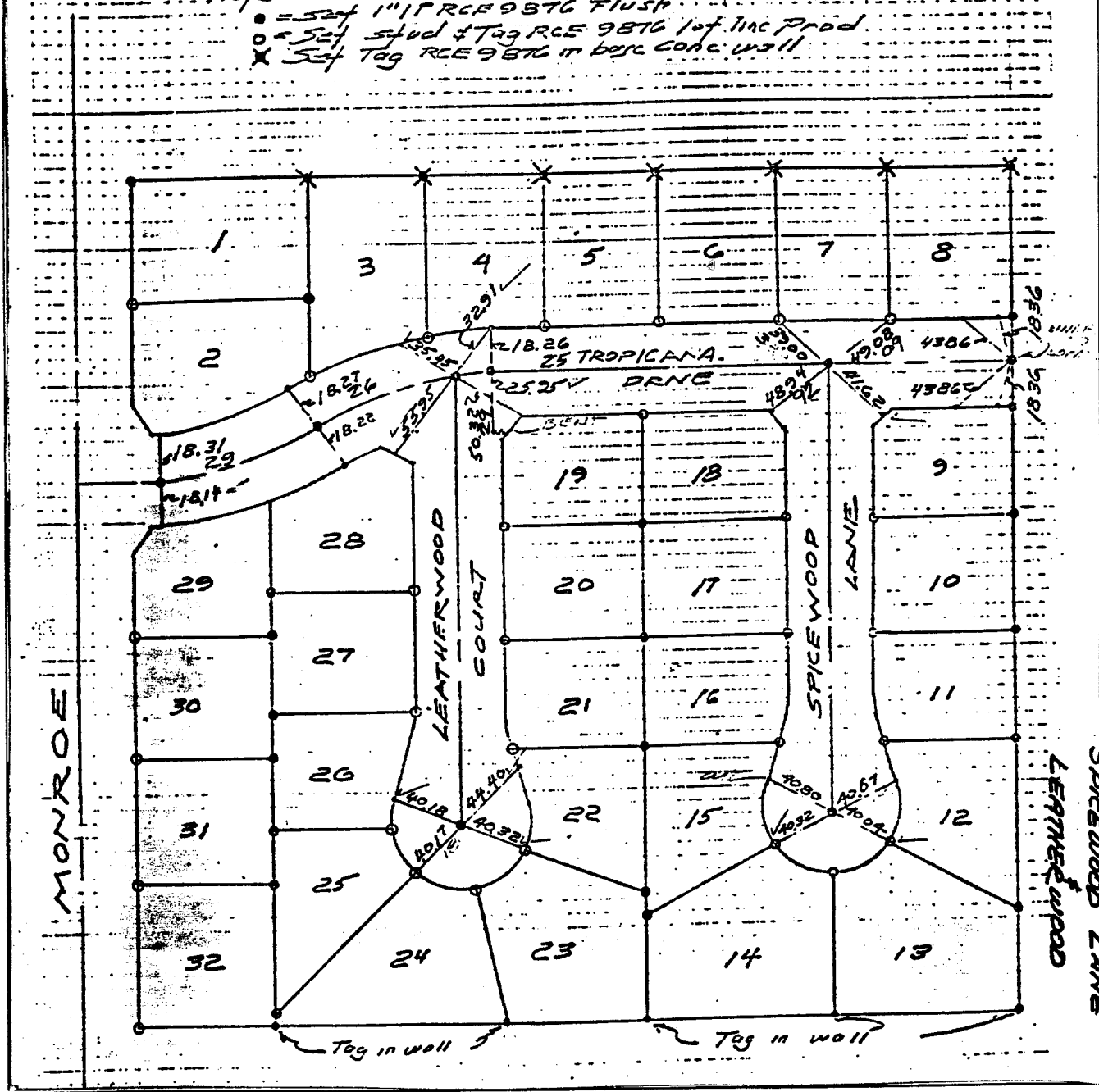


TR 6305 DATE 2-9-77 TO 74-264
 PARTING AND NUMBER *Balby Jordine MacArthur* 1038 PAGE 160
 ME APPR. CALLED BY AGED CHECKED BY MAP NO. V. CATHIP

Note
 ● = Set 1" RCE 9876 Flush
 ○ = Set Stud & Tag RCE 9876 1 of 1mc Prod
 X = Set Tag RCE 9876 in base conc wall



- ✕ FD. Ramset Nail on T/C
- FD. LD. & TK. on T/C
- FD. "C" Nail on T/C
- Set LD. & TK. on T/C

Street: TROPICANA DR.
 7825 TIF
 X-Street: LEATHERWOOD COURT
 OFFICIAL USE ONLY

Scale:
 Date: 2-9-77
 Drawn by:
 W.O.:
 F.B.: 1038 P.160

OFFICIAL TIE PLAT
 CITY OF RIVERSIDE
 These ties are for the purpose of perpetuating the found
 monumentation. No claim is made as to the relationship of
 the points or lines shown hereon to true boundary locations.

TR 6305
 Sheet 1 of 1
 File No.: