

J. F. DAVIDSON ASSOCIATES  
 CIVIL ENGINEERS • SURVEYORS • PLANNERS

F.B. 83-8024/99

SURVEY OF TRACT 8796-1

SHEET 3 OF 3 SHEETS

FOR K & B

W.O.No. 83-8024

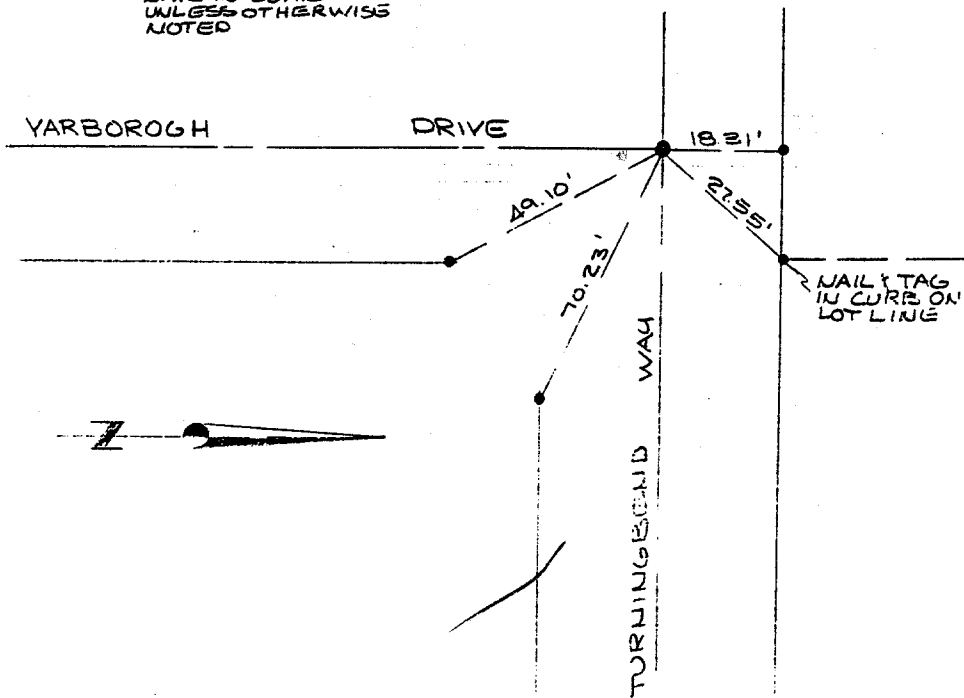
DATE DEC. 8, 1993

SURVEY PARTY EURLONG, ANDREWS

REF.

A.M.

• INDICATES SET  
 NAIL IN CURB  
 UNLESS OTHERWISE  
 NOTED



*TURNING BEND  
 @ YARBOROUGH*

- ✕ FD. Ramset Nail on T/C
- FD. "C" Nail on T/C

- FD. LD. & TK. on T/C
- Set LD. & TK. on T/C

Street: TURNING BEND WAY  
 790471E  
 X-Street: YARBOROUGH DRIVE  
 OFFICIAL USE ONLY

Scale:  
 Date:  
 Drawn by:  
 W.O.:  
 F.B.: 83-8024/99

**OFFICIAL TIE PLAT**  
**CITY OF RIVERSIDE**

*These ties are for the purpose of perpetuating the found monumentation. No claim is made as to the relationship of the points or lines shown hereon to true boundary locations.*

TR 8796-1  
 Sheet 3 of 3  
 File No.: