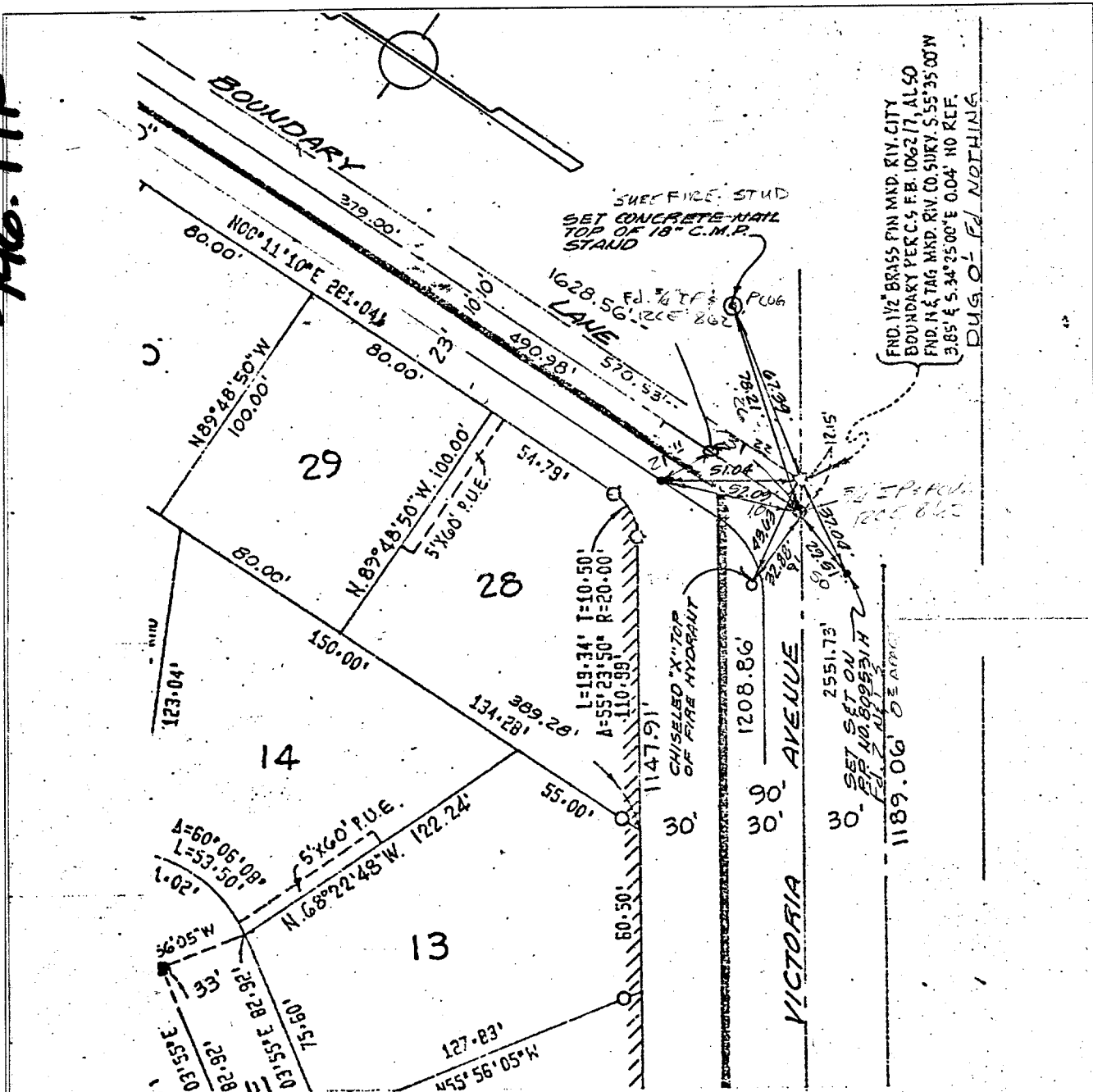


111-96



- Indicates Set 1/2" Brass Cap Stamped R.C.E. 862
- ⊙ Indicates Set 3/4" Iron Pipe Tagged R.C.E. 862
- ⊗ Indicates Set Nail & Tagged R.C.E. 862 In Curb.
- Indicates Set Nail In Curb. Unless otherwise Noted.

- ✕ FD. Ramset Nail on T/C
- FD. LD. & TK. on T/C
- FD. "C" Nail on T/C
- Set LD. & TK. on T/C

Street: **BOUNDARY LN.**

X-Street: **VICTORIA AVE**

OFFICIAL USE ONLY

Scale:
Date:
Drawn by:
W.O.:
F.B.:

OFFICIAL TIE PLAT
CITY OF RIVERSIDE

These ties are for the purpose of perpetuating the found monumentation. No claim is made as to the relationship of the points or lines shown hereon to true boundary locations.

TRACT 4915

Sheet **8** of **8**

File No.: