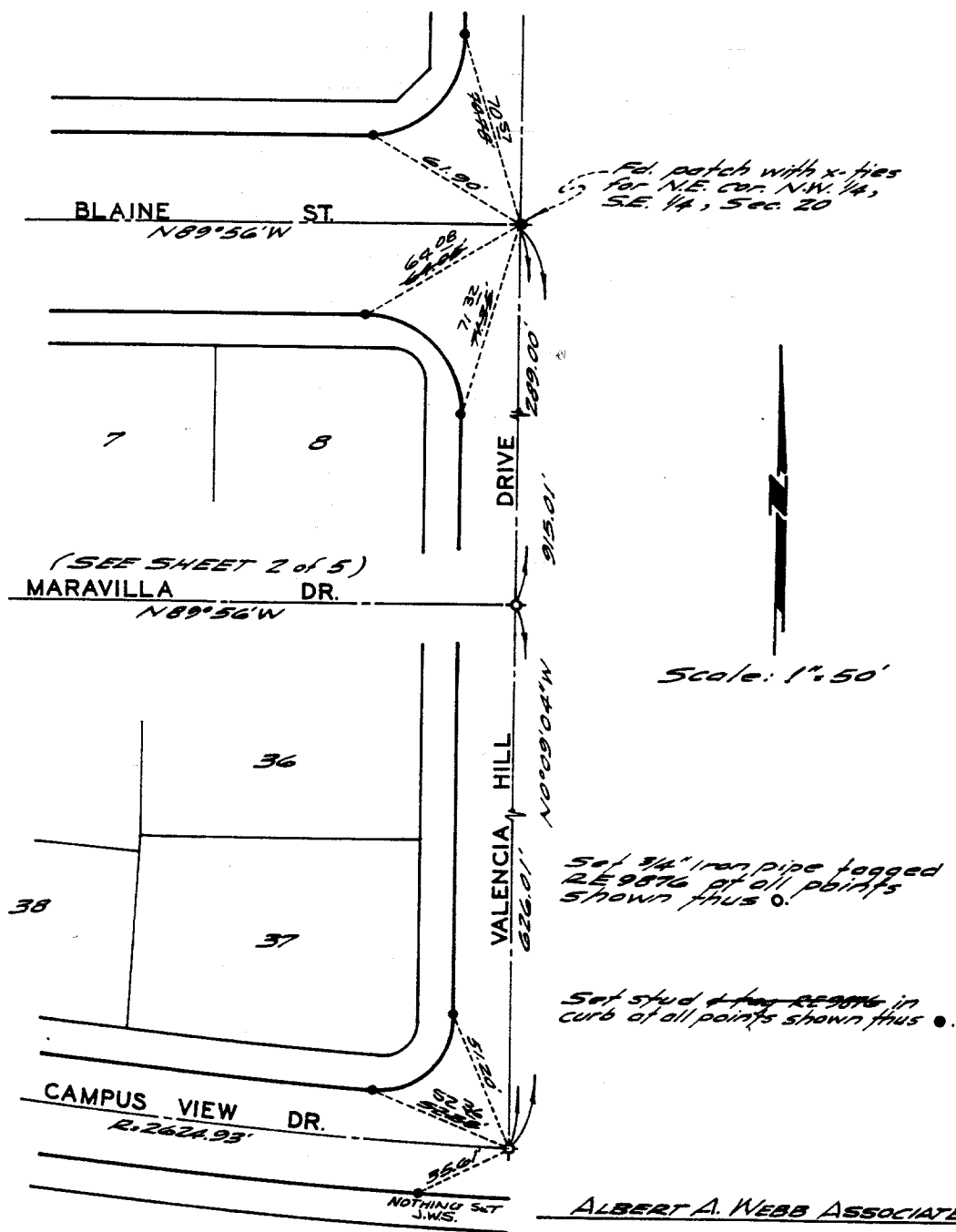


Street: VALENCIA HILL DR. X-Street: CAMPUS VIEW DR.
8026.71F OFFICIAL USE ONLY

VALENCIA HILL DR.
 @ Campus View
 Blaine

BEING A SUBDIVISION OF
 A PORTION OF THE S.E. 1/4
 OF SECTION 20, T.25, R.4W.,
 S.B.B. & M.

VALENCIA HILL
 @
 BLAINE ST & CAMPUS
 VIEW DR.



ALBERT A. WEBB ASSOCIATES
 F.B. 626/57-58
 W.O. 66-84

- ✕ FD. Ramset Nail on T/C
- FD. LD. & TK. on T/C
- FD. "C" Nail on T/C
- Set LD. & TK. on T/C

Scale:
 Date:
 Drawn by:
 W.O.:
 F.B.: 626/57-58

OFFICIAL TIE PLAT CITY OF RIVERSIDE

These ties are for the purpose of perpetuating the found monumentation. No claim is made as to the relationship of the points or lines shown hereon to true boundary locations.

TRACT 2881
 Sheet 1 of 1
 File No.: