

Street: VANGUARD WAY
806 9, T 1 F
 X-Street: GLENDALE & RUTLAND
 OFFICIAL USE ONLY

TRACT 5104-3

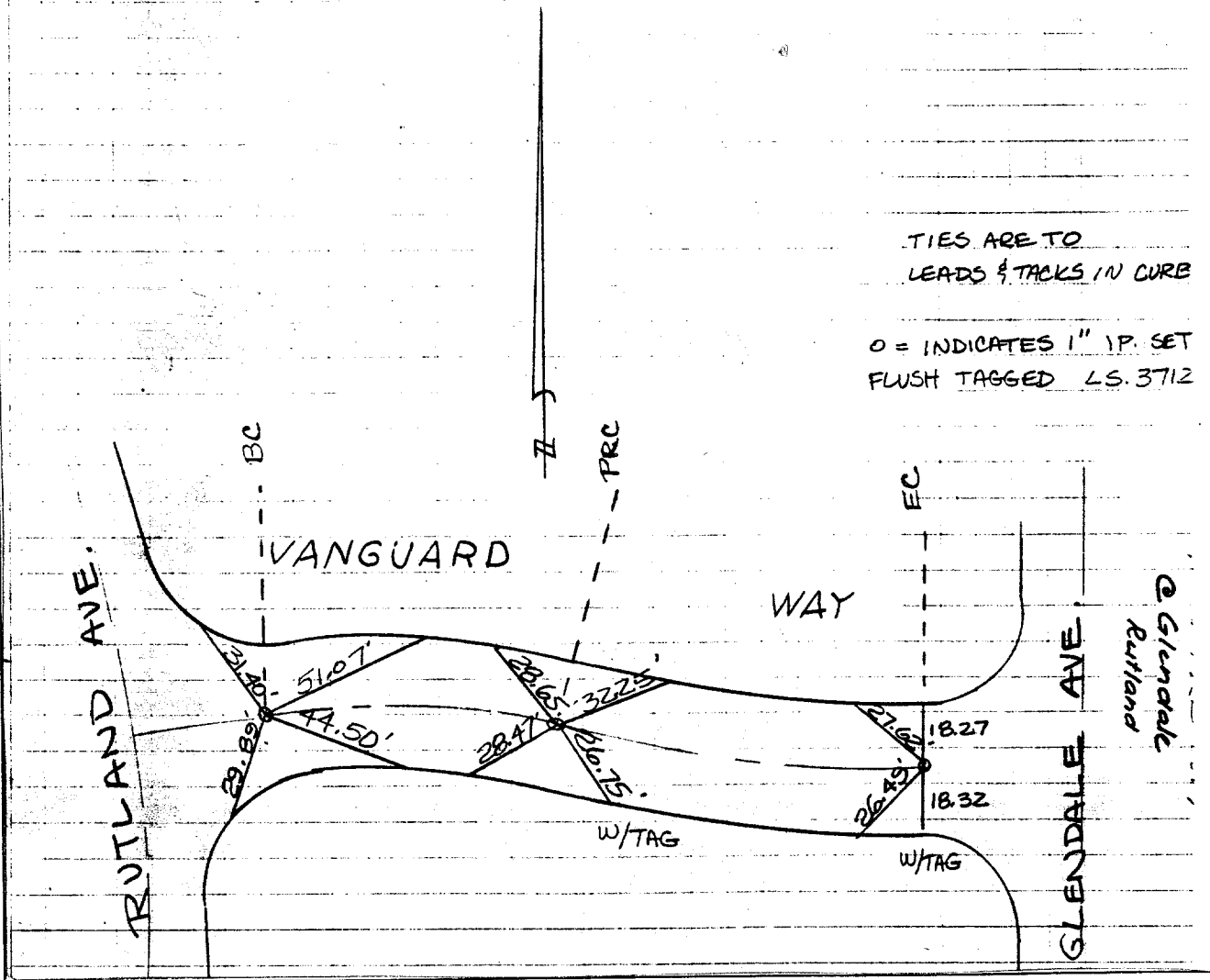
SWING
TIES

VANGUARD WAY
 BTN RUTLAND &
 GLENDALE

MAXWELL BROWN & MULLINS
 COPY

TIES ARE TO
 LEADS & TACKS IN CURB

O = INDICATES 1" IP. SET
 FLUSH TAGGED L.S. 3712



- ✕ FD. Ramset Nail on T/C
- FD. "C" Nail on T/C

- FD. LD. & TK. on T/C
- Set LD. & TK. on T/C

Scale:
 Date:
 Drawn by:
 W.O.:
 F.B.:

OFFICIAL TIE PLAT

CITY OF RIVERSIDE

These ties are for the purpose of perpetuating the found monumentation. No claim is made as to the relationship of the points or lines shown hereon to true boundary locations.

Sheet 1 of 1
 File No.: