

Street: VIA CALLISTO

8089 TIF

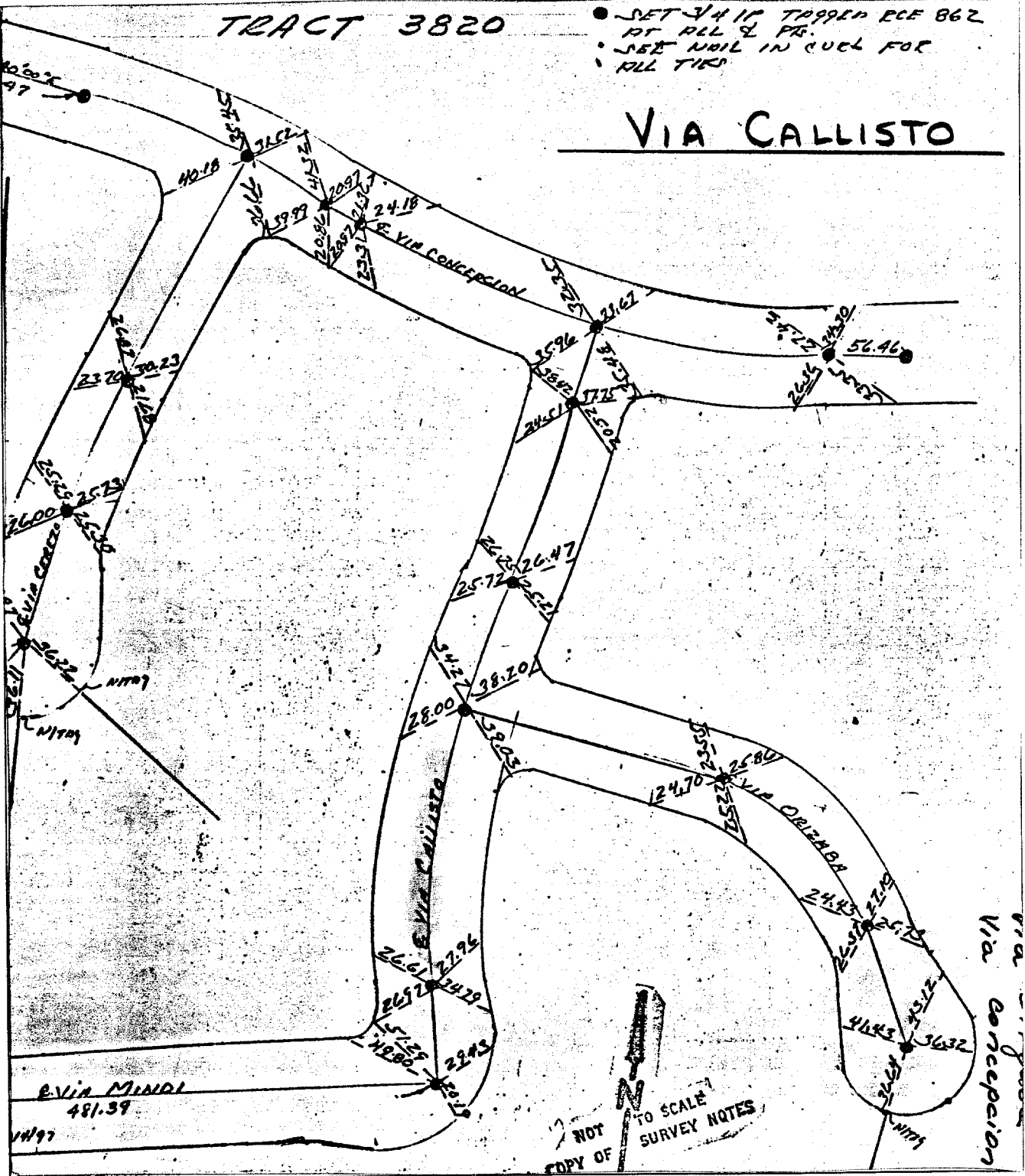
OFFICIAL USE ONLY

X-Street: VIA MINDI

TRACT 3820

- SET 3/4" IF TAPPED RCF 862 FT. ALL 2 PIS.
- SET NAIL IN CUEL FOR ALL TIES

VIA CALLISTO



- × FD. Ramset Nail on T/C
- FD. "C" Nail on T/C

- FD. LD. & TK. on T/C
- Set LD. & TK. on T/C

NOT TO SCALE
COPY OF SURVEY NOTES

Scale:

Date: 7-20-70

Drawn by:

W.O.: 1987

F.B.: 1022/57

OFFICIAL TIE PLAT

CITY OF RIVERSIDE

These ties are for the purpose of perpetuating the found monumentation. No claim is made as to the relationship of the points or lines shown hereon to true boundary locations.

TRACT 3820

Sheet 1 of 1

File No.: