

J. F. DAVIDSON ASSOCIATES
 CIVIL ENGINEERS • SURVEYORS • PLANNERS

F.B. 1022/58

OF POE S1E 1/4 SEC 31 X S1W 1/4 SEC 32 T2S R4W S. 43N14 TR 3820 & T1E

CAL FFD

W.O.No. 1987

DATE 7-20-70

PARTY KRUG-SEPPULVEDO-CARLSON

REF.

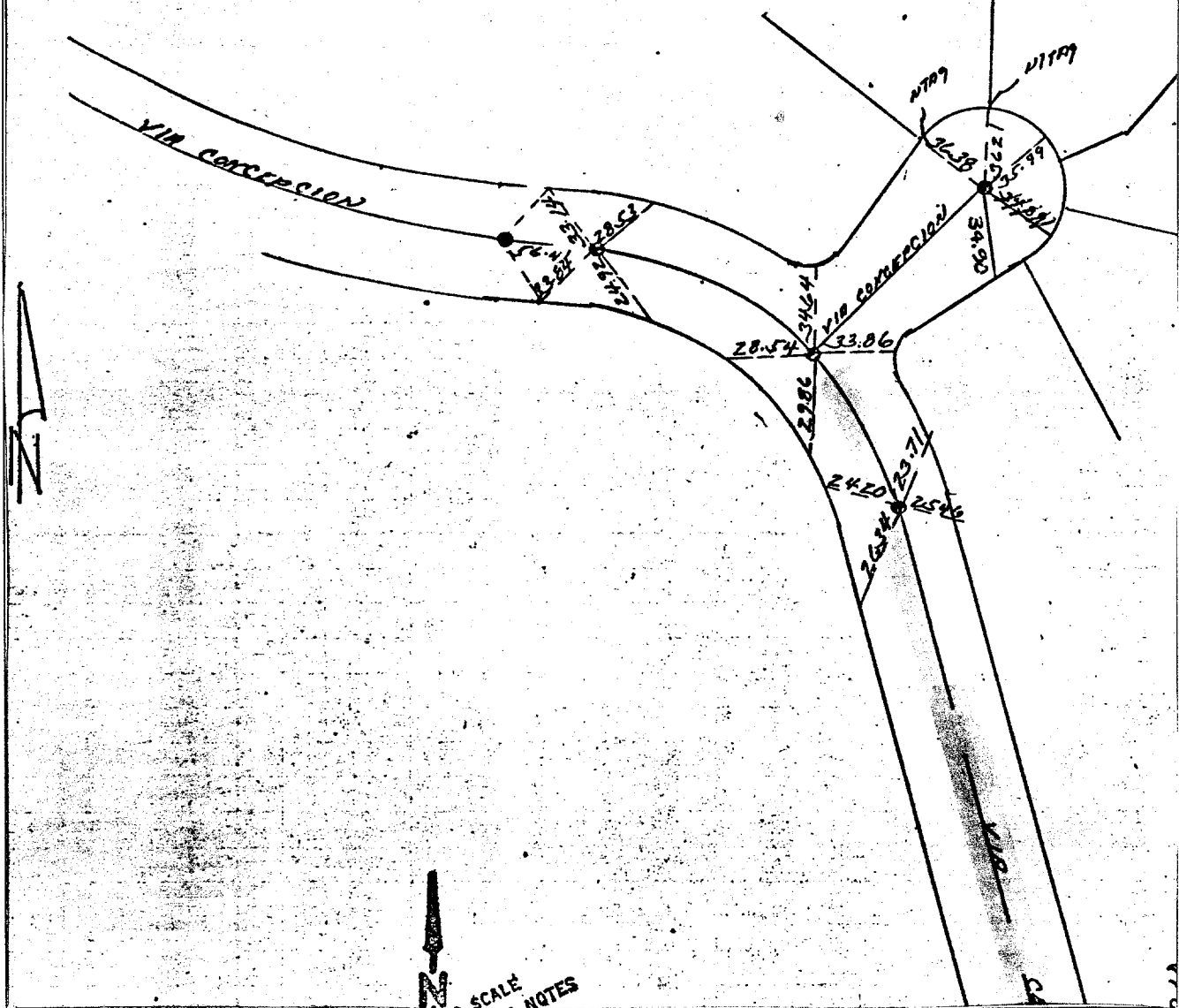
A.M.

TIE SHEET
 TRACT 3820

3/7

- SET 1/4 IP TAPPED PCE 862 AT ALL Q PTS
- SET NAIL IN CUEL FOR ALL TIES

Via Cervantes



- × FD. Ramset Nail on T/C
- FD. "C" Nail on T/C

- FD. LD. & TK. on T/C
- Set LD. & TK. on T/C

Street: VIA CERVANTES
 8095.71E
 X-Street: VIA CONCEPCION
 OFFICIAL USE ONLY

Scale:
 Date: 7/20/70
 Drawn by:
 W.O.:
 F.B.: 1022/58

OFFICIAL TIE PLAT
 CITY OF RIVERSIDE

These ties are for the purpose of perpetuating the found monumentation. No claim is made as to the relationship of the points or lines shown hereon to true boundary locations.

TRACT 3820

Sheet 1 of 1

File No.: