

F.B.:
W.O.:
Date: 09/25/97
Scale: 1" = 40'

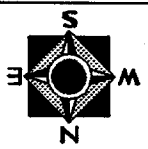
Drawn by: scurtis/df

These ties are for the purpose of perpetuating the found
monumentation. No claim is made as to the relationship of
the points or lines shown hereon to true boundary locations.

OFFICIAL TIE PLAT CITY OF RIVERSIDE

File No.:

Sheet 1 of 1



- × FD. Ramset Nail on T/C
- FD. "C" Nail on T/C
- FD. LD. & TK. on T/C
- Set LD. & TK. on T/C

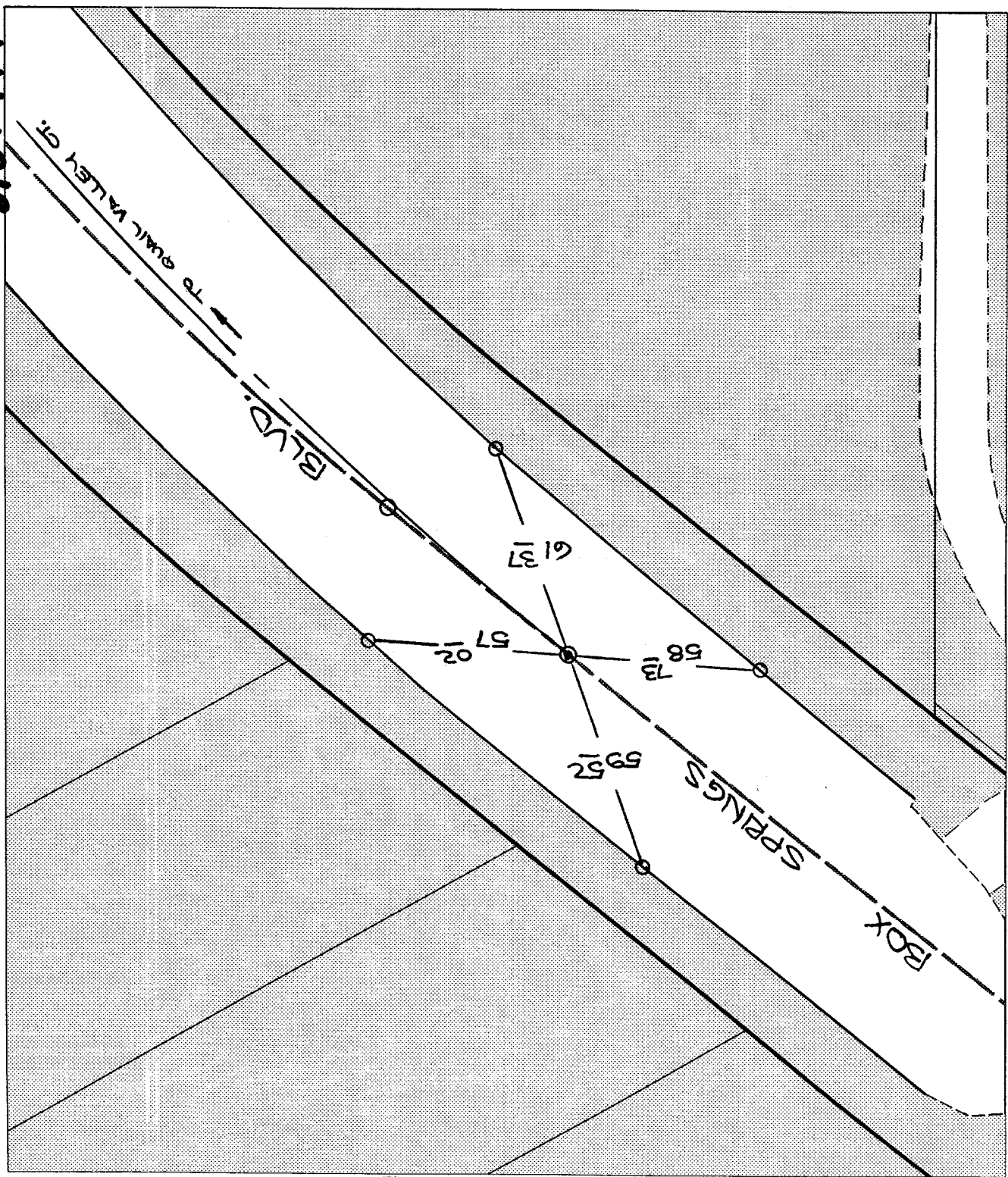
Street:

BOX SPRINGS BLVD.

OFFICIAL USE ONLY

X-Street:

E.C. NLY QUAIL VALLEY CT.



310-018