

Street: VIA CONCEPCION X-Street: VIA CERVANTES
8103, TIE OFFICIAL USE ONLY

J. F. DAVIDSON ASSOCIATES
 CIVIL ENGINEERS • SURVEYORS • PLANNERS

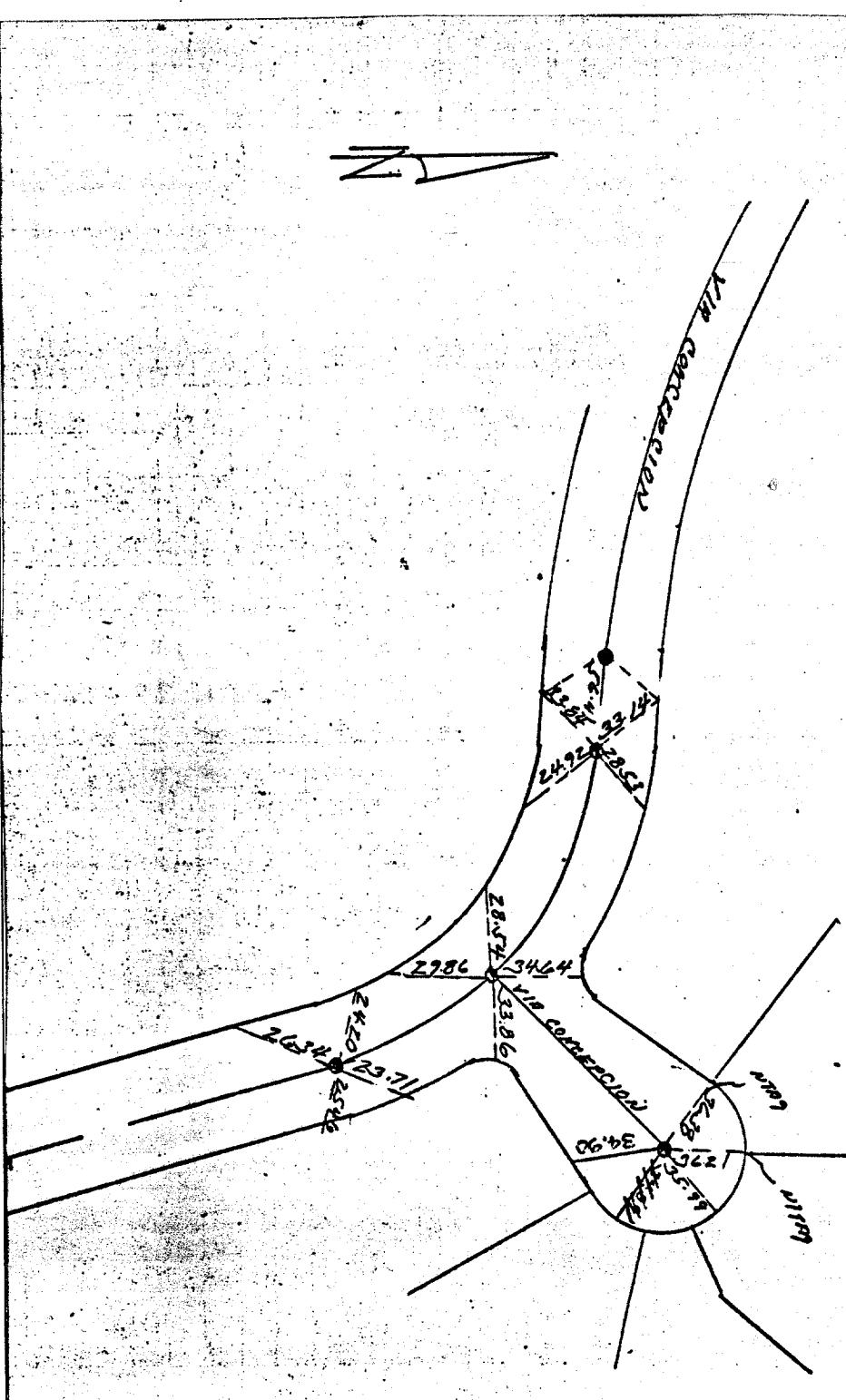
F.B. 1022/58

SURVEY OF FOR SITE 44 SEC 31 X 36 1/4 SEC 32 T2S E4W S48W1/4 TRACT 3820 & TIES
 FOR CDL FEP W.O. No. 1987 DATE 7-20-70

TIE SHEET
 TRACT 3820
 3/4

- SET 1/4 IN TOPPED PGS 812
- SET ALL & PK
- SET NAILS IN CUEL FOR ALL TIES

Via Concepcion



- × FD. Ramset Nail on T/C
- FD. LD. & TK. on T/C
- FD. "C" Nail on T/C
- Set LD. & TK. on T/C

Scale:
 Date:
 Drawn by:
 W.O.:
 F.B.: 1022/58

OFFICIAL TIE PLAT
CITY OF RIVERSIDE
 These ties are for the purpose of perpetuating the found monumentation. No claim is made as to the relationship of the points or lines shown hereon to true boundary locations.

TRACT 3820
 Sheet 1 of 1
 File No.: