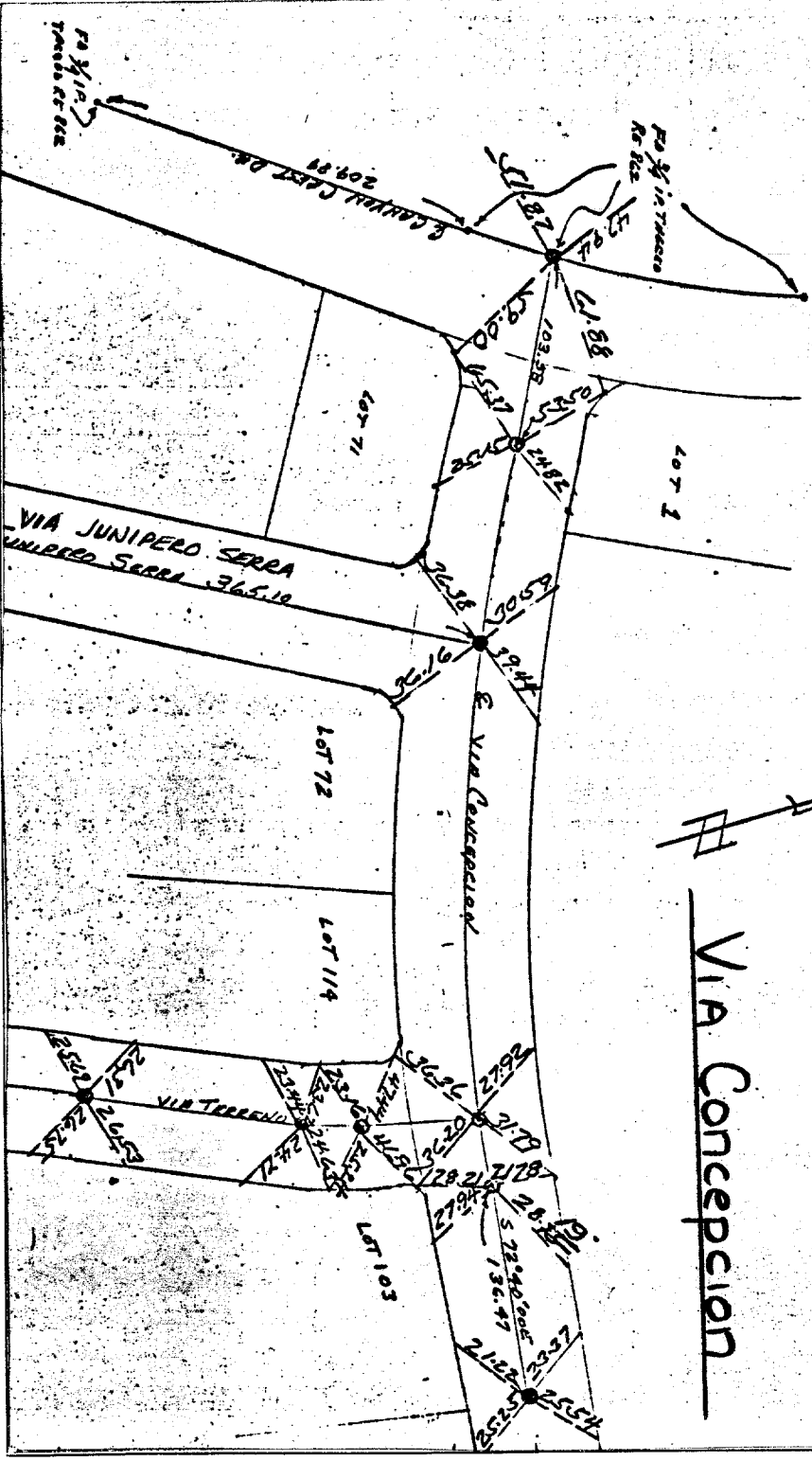


Street: VIA CONCEPCION 8105. 71E X-Street: VIA JUNIPERO SERRA
 OFFICIAL USE ONLY

J. F. DAVIDSON ASSOCIATES
 CIVIL ENGINEERS • SURVEYORS • PLANNERS
 F.B. 1022/56
 SURVEY OF FOR THE SEC 31 & 32 T-25 E-4
 FOR CARL. FEO W.O.No. 1987 DATE 7-17-70
 SURVEY PARTY LEWIS, SEPULVEDA - CARLSON REF. TIE SHEET 1/4

TRACT 3820



● SET 3/4" IP THUMB RCF B&C
 RT ALL & PTS
 • SET NAIL IN CUT & FOR
 ALL TIES

VIA Concepcion

- ✗ FD. Ramset Nail on T/C
- FD. LD. & TK. on T/C
- FD. "C" Nail on T/C
- Set LD. & TK. on T/C

Scale:
 Date:
 Drawn by:
 W.O.:
 F.B.: 1022/56

OFFICIAL TIE PLAT
CITY OF RIVERSIDE
 These ties are for the purpose of perpetuating the found
 monumentation. No claim is made as to the relationship of
 the points or lines shown hereon to true boundary locations.

TRACT 3820
 Sheet 1 of 1
 File No.: