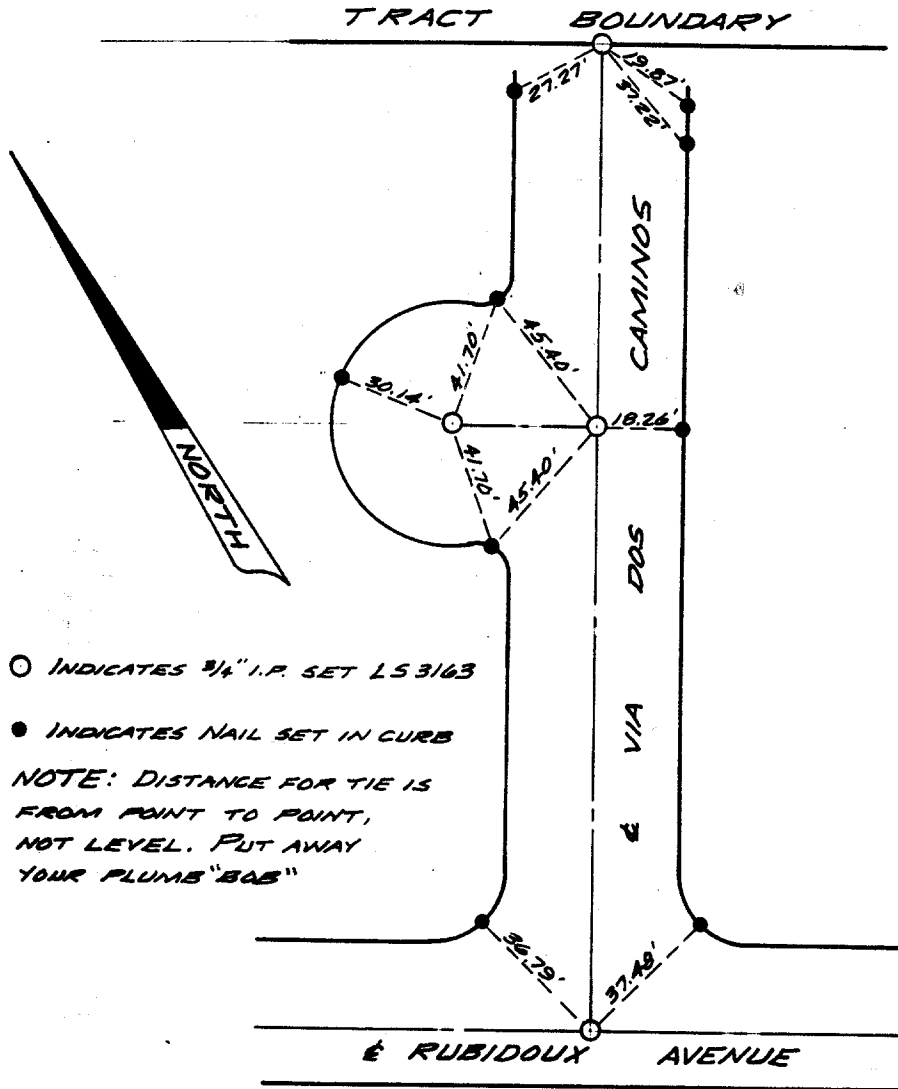


# TIE SHEET TRACT 3191



○ INDICATES 3/4" I.P. SET LS 3163

● INDICATES NAIL SET IN CURB

NOTE: DISTANCE FOR TIE IS FROM POINT TO POINT, NOT LEVEL. PUT AWAY YOUR PLUMB "BOB"

VIA DOS CAMINOS  
- TIE SHEET -  
Rubidoux Ave.

FB 76/42

× FD. Ramset Nail on T/C  
■ FD. "C" Nail on T/C

● FD. LD. & TK. on T/C  
○ Set LD. & TK. on T/C

Street: VIA DOS CAMINOS  
8115. TIE

X-Street: RUBIDOUX AVE  
OFFICIAL USE ONLY

Scale:  
Date:  
Drawn by:  
W.O.:  
F.B.: 76/42

## OFFICIAL TIE PLAT CITY OF RIVERSIDE

These ties are for the purpose of perpetuating the found monumentation. No claim is made as to the relationship of the points or lines shown hereon to true boundary locations.

TRACT 3139

Sheet 1 of 1  
File No.: