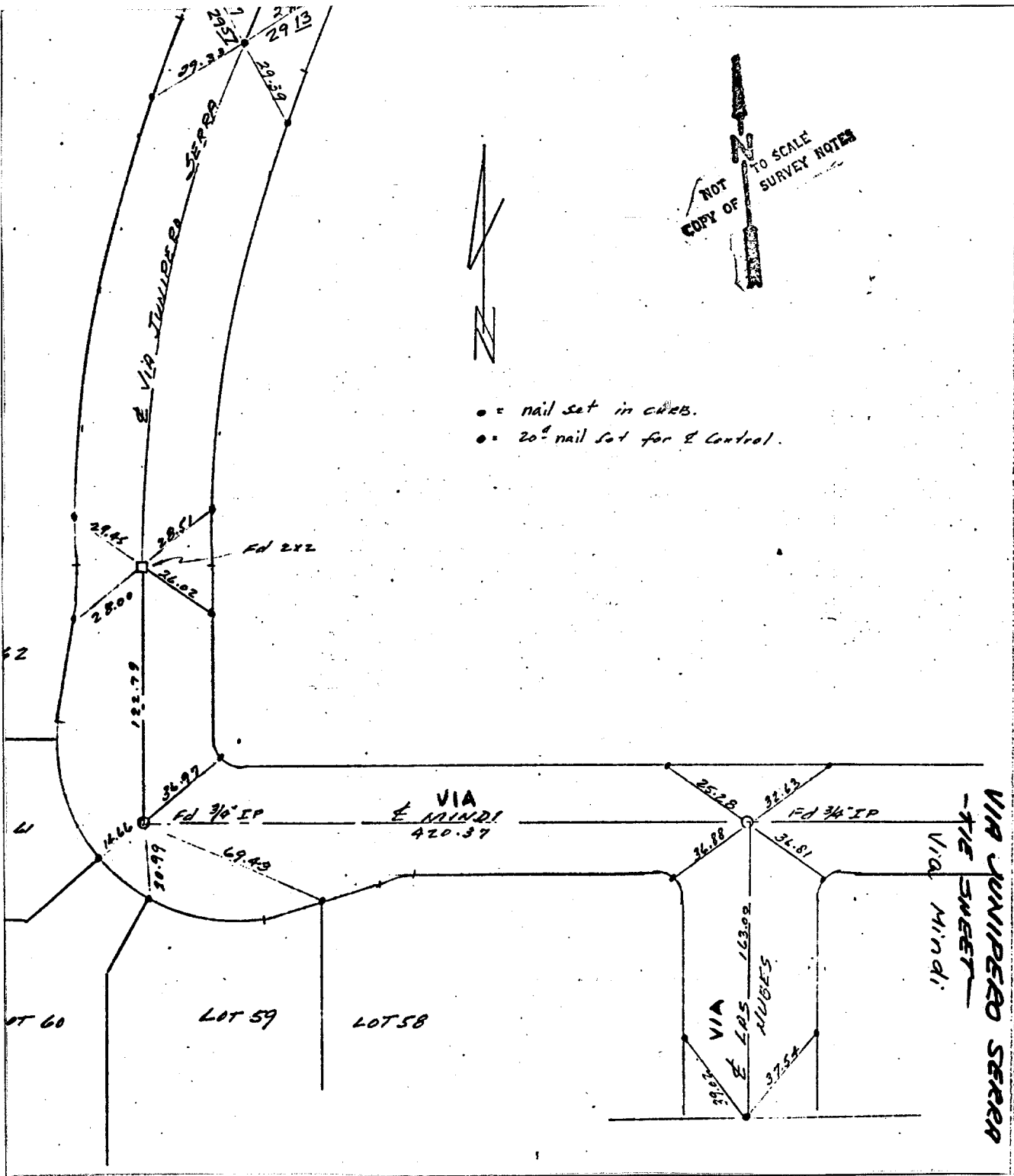


Street: VIA JUNIPERO SERRA
8116 TIF

X-Street: VIA MINDI
 OFFICIAL USE ONLY



● = nail set in curbs.
 ○ = 20" nail set for 2 Control.

- ✕ FD. Ramset Nail on T/C
- FD. LD. & TK. on T/C
- FD. "C" Nail on T/C
- Set LD. & TK. on T/C

Scale:
 Date:
 Drawn by:
 W.O.: 1987
 F.B.: 1014

OFFICIAL TIE PLAT
CITY OF RIVERSIDE

These ties are for the purpose of perpetuating the found monumentation. No claim is made as to the relationship of the points or lines shown hereon to true boundary locations.

TRACT 3820
 Sheet 1 of 1
 File No.: