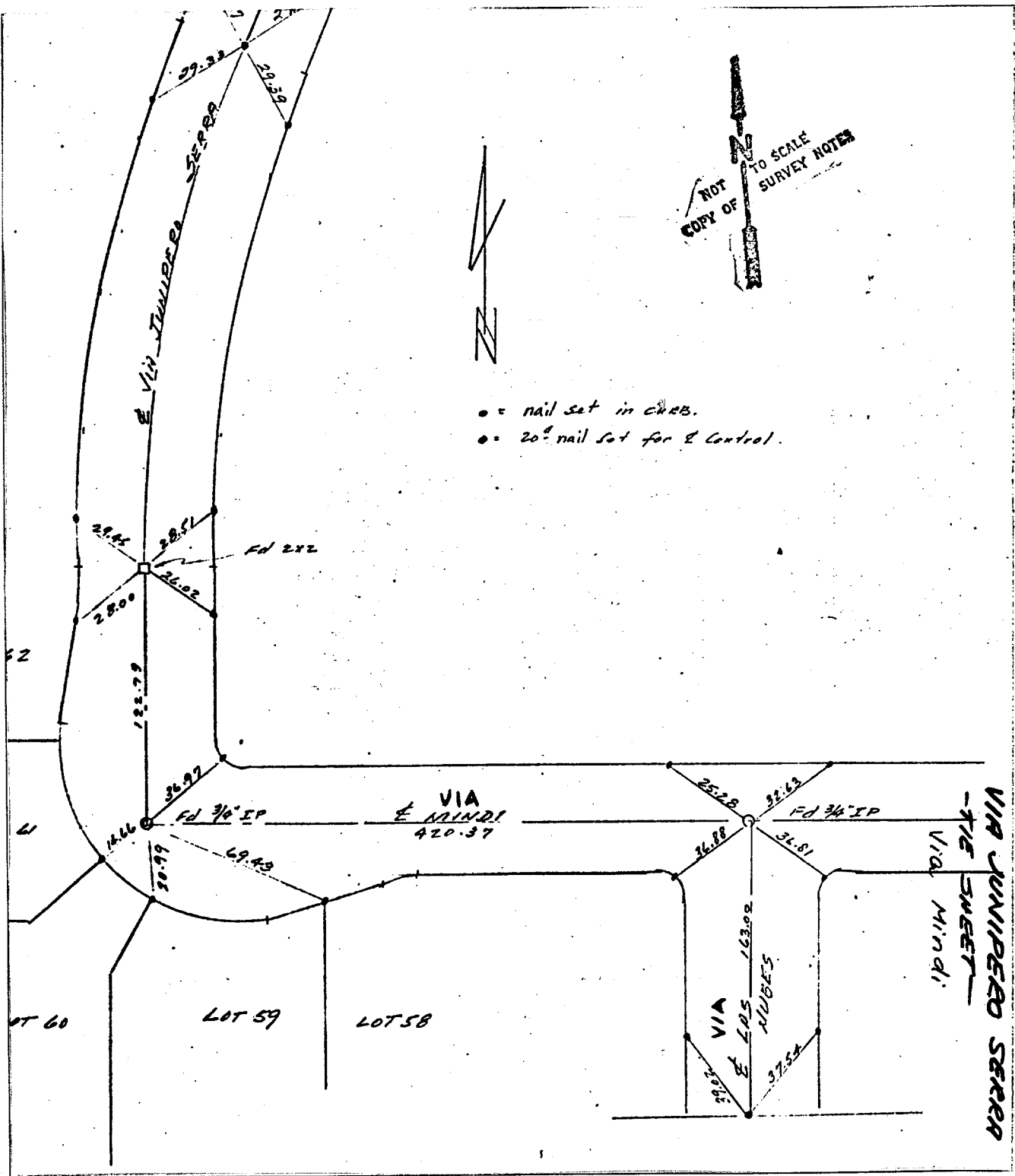


Street: VIA MINDI
8123.71E

X-Street: VIA LAS NUBES
 OFFICIAL USE ONLY

VIA LAS NUBES



- = nail set in ches.
- = 20' nail set for E Control.

- ⊗ FD. Ramset Nail on T/C
- FD. LD. & TK. on T/C
- FD. "C" Nail on T/C
- Set LD. & TK. on T/C

Scale:
 Date:
 Drawn by:
 W.O.: 1987
 F.B.: 1014

OFFICIAL TIE PLAT

CITY OF RIVERSIDE

These ties are for the purpose of perpetuating the found monumentation. No claim is made as to the relationship of the points or lines shown hereon to true boundary locations.

TRACT 3820

Sheet 1 of 1
 File No.: