

SWING TIES

8143.71F

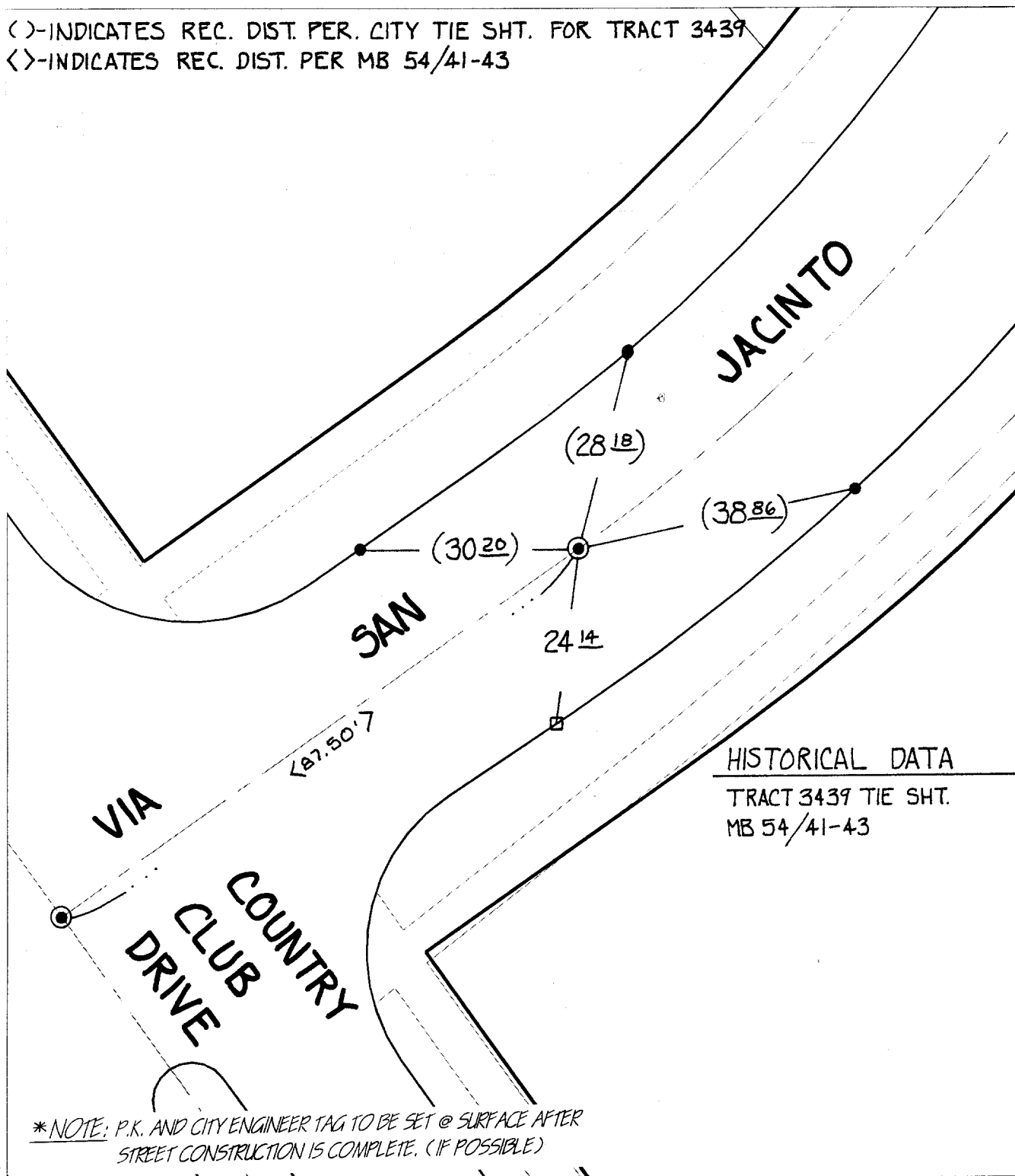
Street:

VIA SAN JACINTO

OFFICIAL USE ONLY

X-Street BC N./COUNTRY CLUB DR.

()-INDICATES REC. DIST. PER. CITY TIE SHT. FOR TRACT 3439
 < >-INDICATES REC. DIST. PER MB 54/41-43



*NOTE: P.K. AND CITY ENGINEER TAG TO BE SET @ SURFACE AFTER STREET CONSTRUCTION IS COMPLETE. (IF POSSIBLE)

- × FD. Ramset Nail on T/C
- FD. "C" Nail on T/C

- FD. LD. & TK. on T/C
- Set LD. & TK. on T/C

Scale: 1" = 20'

Date: 06/14/00

Drawn by: SURVEY

W.O.:

F.B.:

OFFICIAL TIE PLAT CITY OF RIVERSIDE

These ties are for the purpose of perpetuating the found monumentation. No claim is made as to the relationship of the points or lines shown hereon to true boundary locations.



Sheet 1 of 1

File No.: