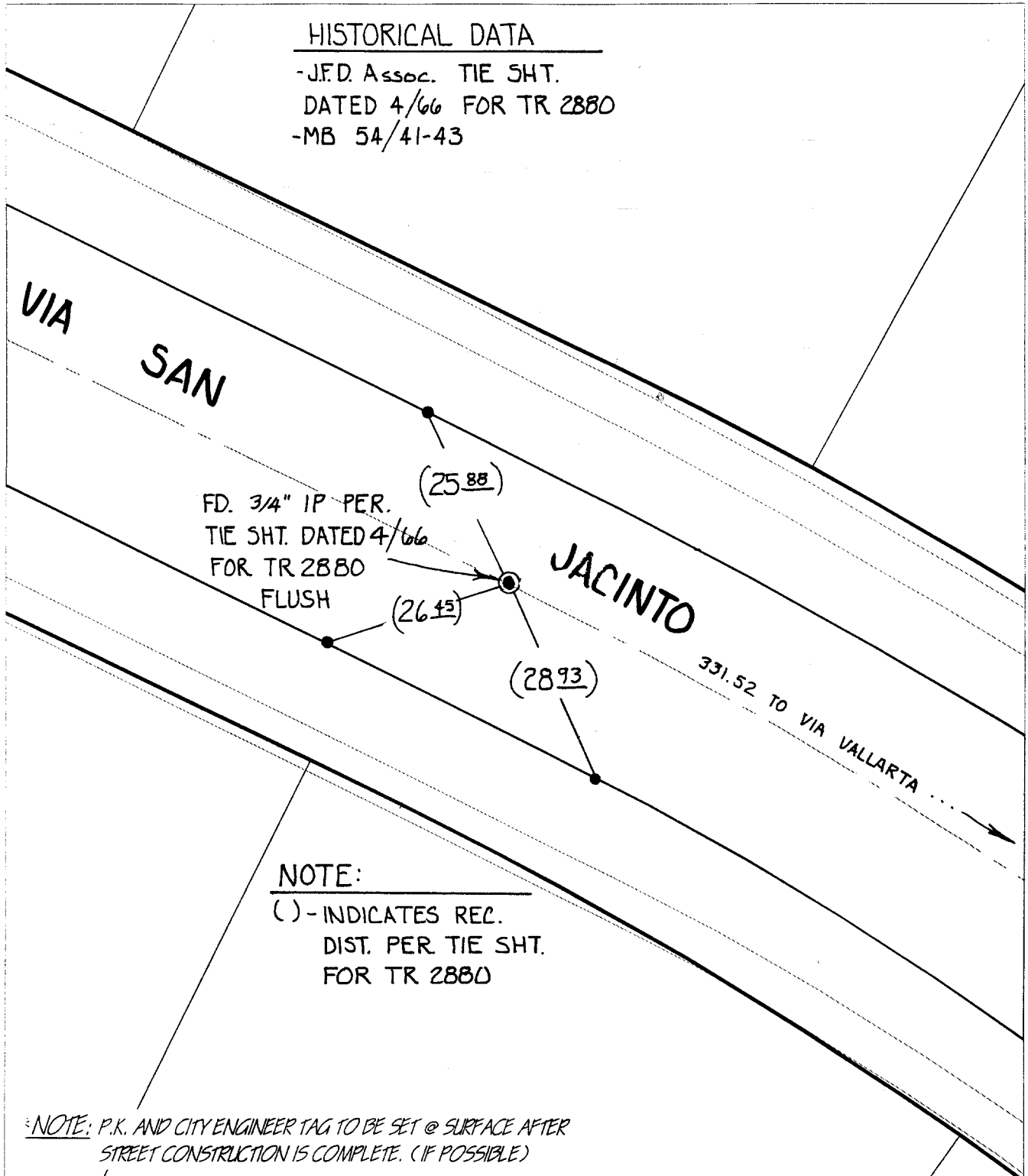


# SWING TIES

HISTORICAL DATA

-J.F.D. Assoc. TIE SHT.  
DATED 4/66 FOR TR 2880  
-MB 54/41-43



NOTE:  
( ) - INDICATES REC.  
DIST. PER TIE SHT.  
FOR TR 2880

NOTE: P.K. AND CITY ENGINEER TAG TO BE SET @ SURFACE AFTER  
STREET CONSTRUCTION IS COMPLETE. (IF POSSIBLE)


- ✕ FD. Ramset Nail on T/C
- FD. LD. & TK. on T/C
- FD. "C" Nail on T/C
- Set LD. & TK. on T/C

Street: VIA SAN JACINTO  
**8146 TIF**  
 X-Street: EC NW VIA VALLARTA  
 OFFICIAL USE ONLY

Scale: 1" = 20'  
 Date: 06/14/00  
 Drawn by: SURVEY  
 W.O.:  
 F.B.:

**OFFICIAL TIE PLAT**  
**CITY OF RIVERSIDE**

*These ties are for the purpose of perpetuating the found  
 monumentation. No claim is made as to the relationship of  
 the points or lines shown hereon to true boundary locations.*

  
 Sheet 1 of 1  
 File No.: