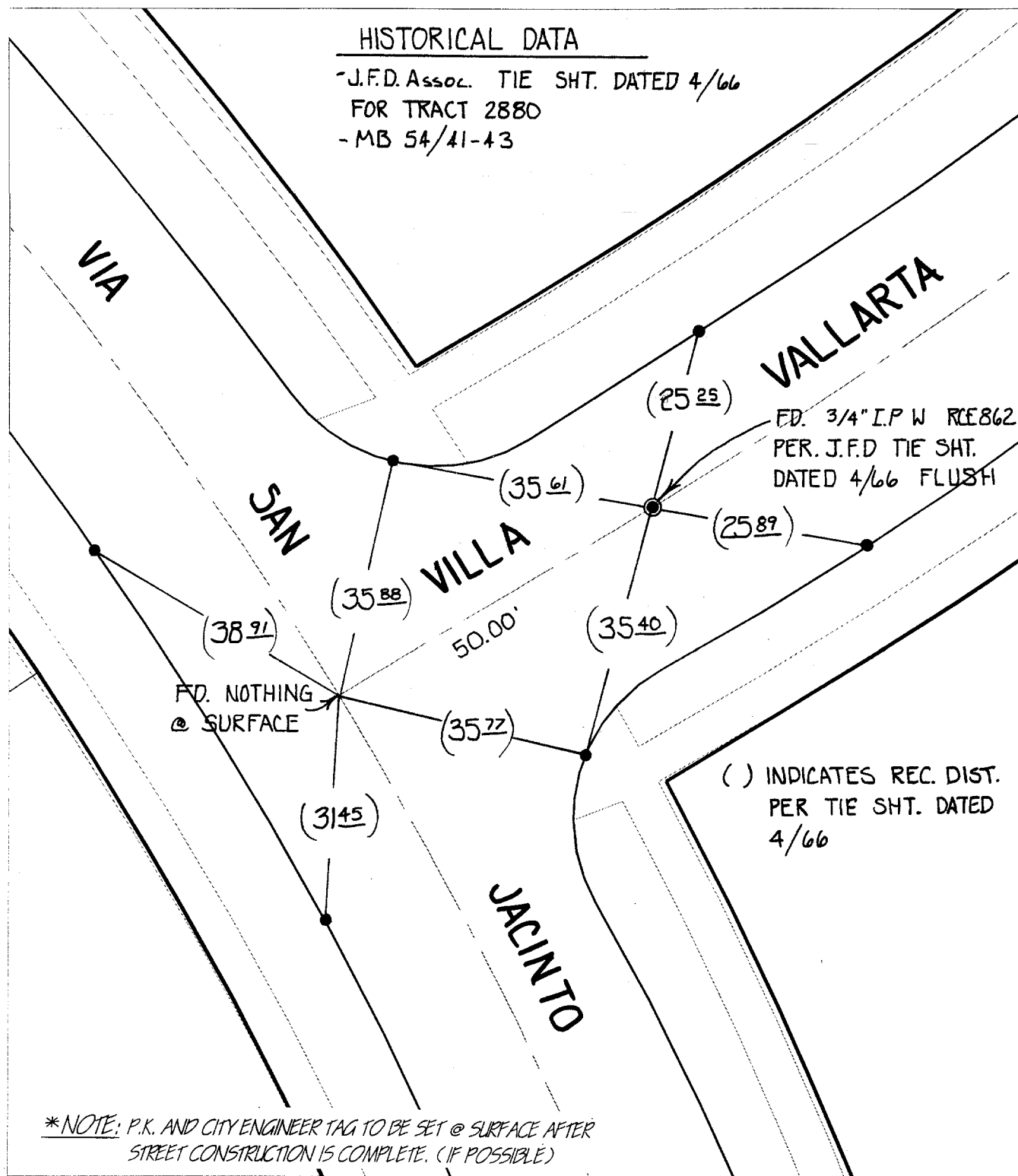


SWING TIES

HISTORICAL DATA

- J.F.D. Assoc. TIE SHT. DATED 4/66
 FOR TRACT 2880
 - MB 54/41-43



FD. 3/4" I.P.W RCE862
 PER. J.F.D TIE SHT.
 DATED 4/66 FLUSH

() INDICATES REC. DIST.
 PER TIE SHT. DATED
 4/66

*NOTE: P.K. AND CITY ENGINEER TAG TO BE SET @ SURFACE AFTER
 STREET CONSTRUCTION IS COMPLETE. (IF POSSIBLE)

- ✕ FD. Ramset Nail on T/C
- FD. LD. & TK. on T/C
- FD. "C" Nail on T/C
- Set LD. & TK. on T/C

Street:

VIA SAN JACINTO
 8147.716

X-Street:
 OFFICIAL USE ONLY

VILLA VALLARTA

Scale: 1" = 20'
 Date: 06/14/00
 Drawn by: SURVEY
 W.O.:
 F.B.:

OFFICIAL TIE PLAT
CITY OF RIVERSIDE

*These ties are for the purpose of perpetuating the found
 monumentation. No claim is made as to the relationship of
 the points or lines shown hereon to true boundary locations.*

Sheet 1 of 1
 File No.: