

TRACT 25486-2

RECORDED IN M.B. 245/59-63

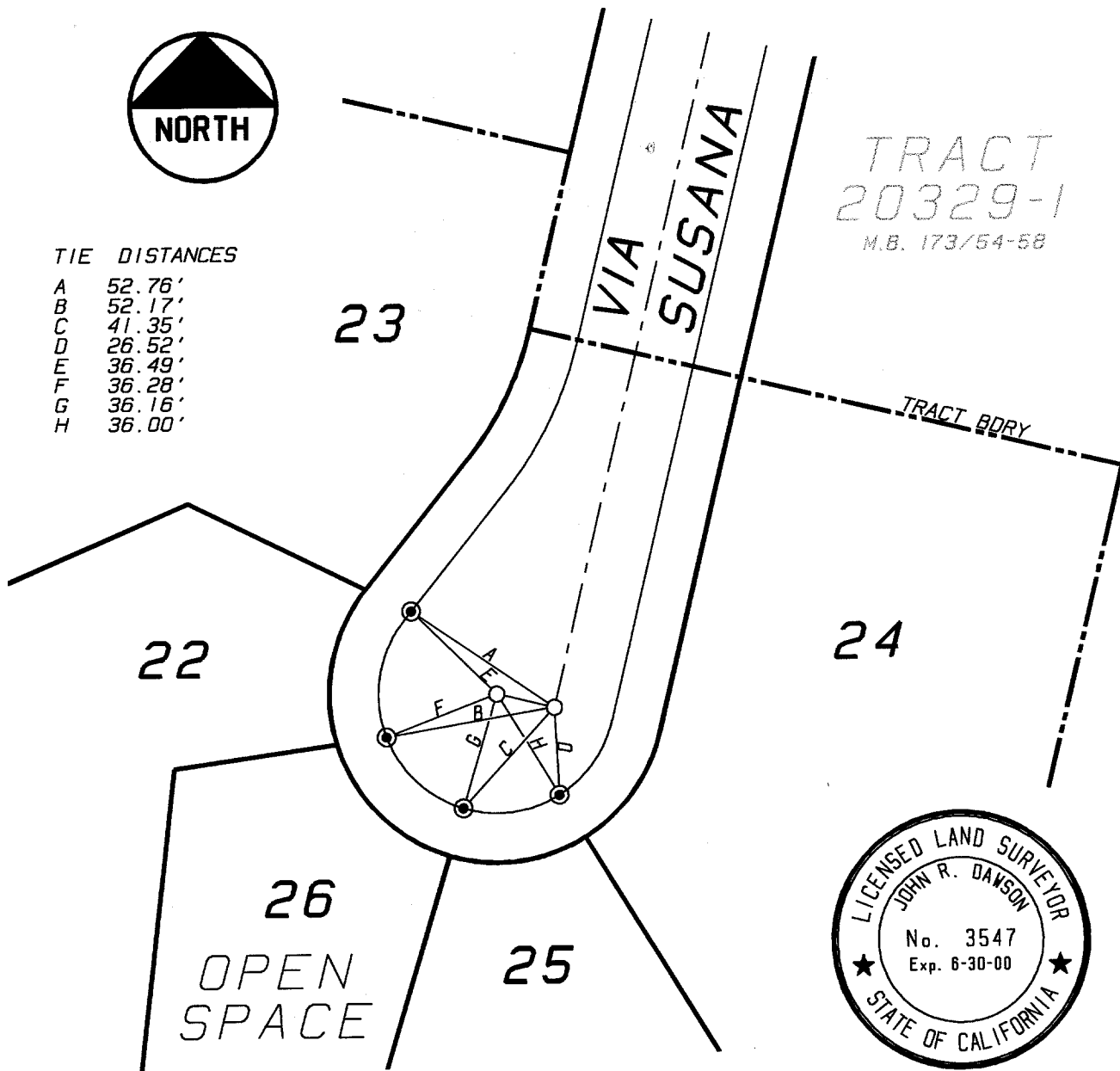
ALL TIES ARE SWING TIES UNLESS OTHERWISE NOTED

- INDICATES SET 8" BOAT SPIKE AND WASHER FLUSH STAMPED L.S. 3547
- INDICATES SET NAIL IN TOP OF CURB
- ⊙ INDICATES SET NAIL AND L.S. TAG IN CURB ON LOT LINE PROJECTED UNLESS OTHERWISE NOTED



TIE DISTANCES

A	52.76'
B	52.17'
C	41.35'
D	26.52'
E	36.49'
F	36.28'
G	36.16'
H	36.00'



T-25486-2

X-STREET CUL-DE-SAC

OFFICE USE ONLY

STREET VIA SUSANA

8167-TIF

8167-TIF

SCALE: 1" = 50'

DATE: 8-11-97

DR. BY: SRD

W.O.: 128.01

F.B.: I

OFFICIAL TIE PLAT CITY OF RIVERSIDE

PREPARED BY:



INTEGRA ENGINEERING, INC.

LAND SURVEYORS * CIVIL ENGINEERS
621 E. CARNEGIE DRIVE, #120, SAN BERNARDINO, CA 92408
TELEPHONE (909) 383-0200 FAX (909) 383-0203

SHEET 3

OF 4 SHEETS
FILE No.: