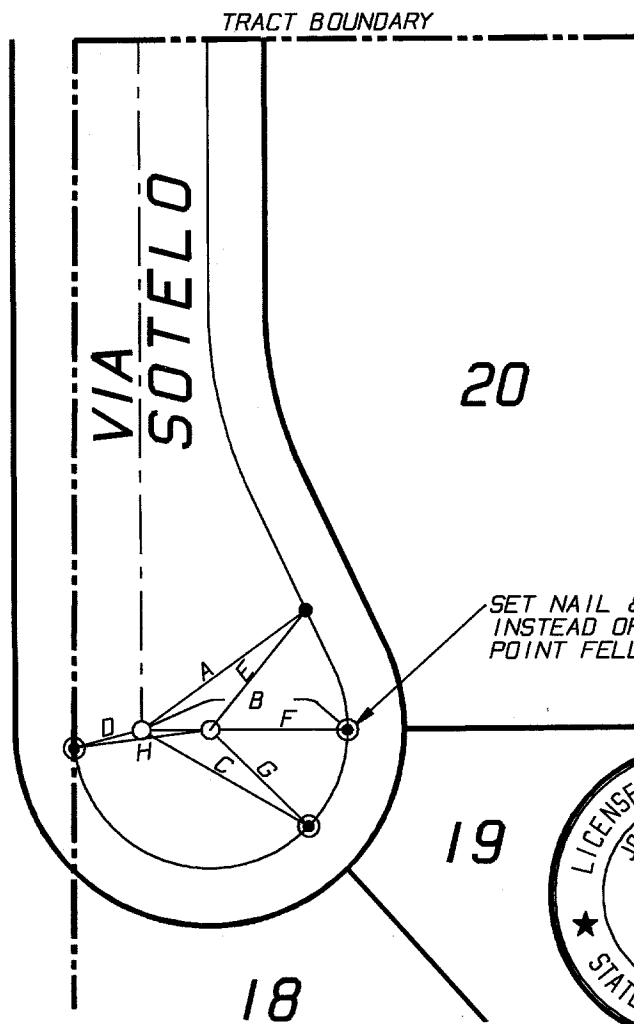


TRACT 25486-2

RECORDED IN M.B. 245/59-63

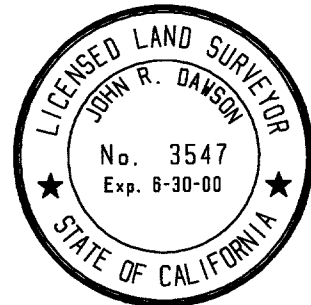
ALL TIES ARE SWING TIES UNLESS OTHERWISE NOTED

- INDICATES SET 8" BOAT SPIKE AND WASHER FLUSH STAMPED L.S. 3547
- INDICATES SET NAIL IN TOP OF CURB
- ⊙ INDICATES SET NAIL AND L.S. TAG IN CURB ON LOT LINE PROJECTED UNLESS OTHERWISE NOTED



TIE DISTANCES

- A 53.10
- B 53.93'
- C 50.65'
- D 18.33'
- E 39.48'
- F 35.93'
- G 36.21'
- H 36.01'



STREET VIA SOTELO
X-STREET CUL-DE-SAC T-25486-2
OFFICE USE ONLY

8169.TIF

SCALE: 1" = 50'
DATE: 8-11-97
DR. BY: SRD
W.O.: 128.01
F.B.: 1

OFFICIAL TIE PLAT
CITY OF RIVERSIDE

PREPARED BY:

INTEGRA ENGINEERING, INC.
LAND SURVEYORS * CIVIL ENGINEERS
621 E. CARNEGIE DRIVE, #120, SAN BERNARDINO, CA. 92408
TELEPHONE (909) 383-0200 FAX (909) 383-0203

SHEET 4
OF 4 SHEETS
FILE No.: