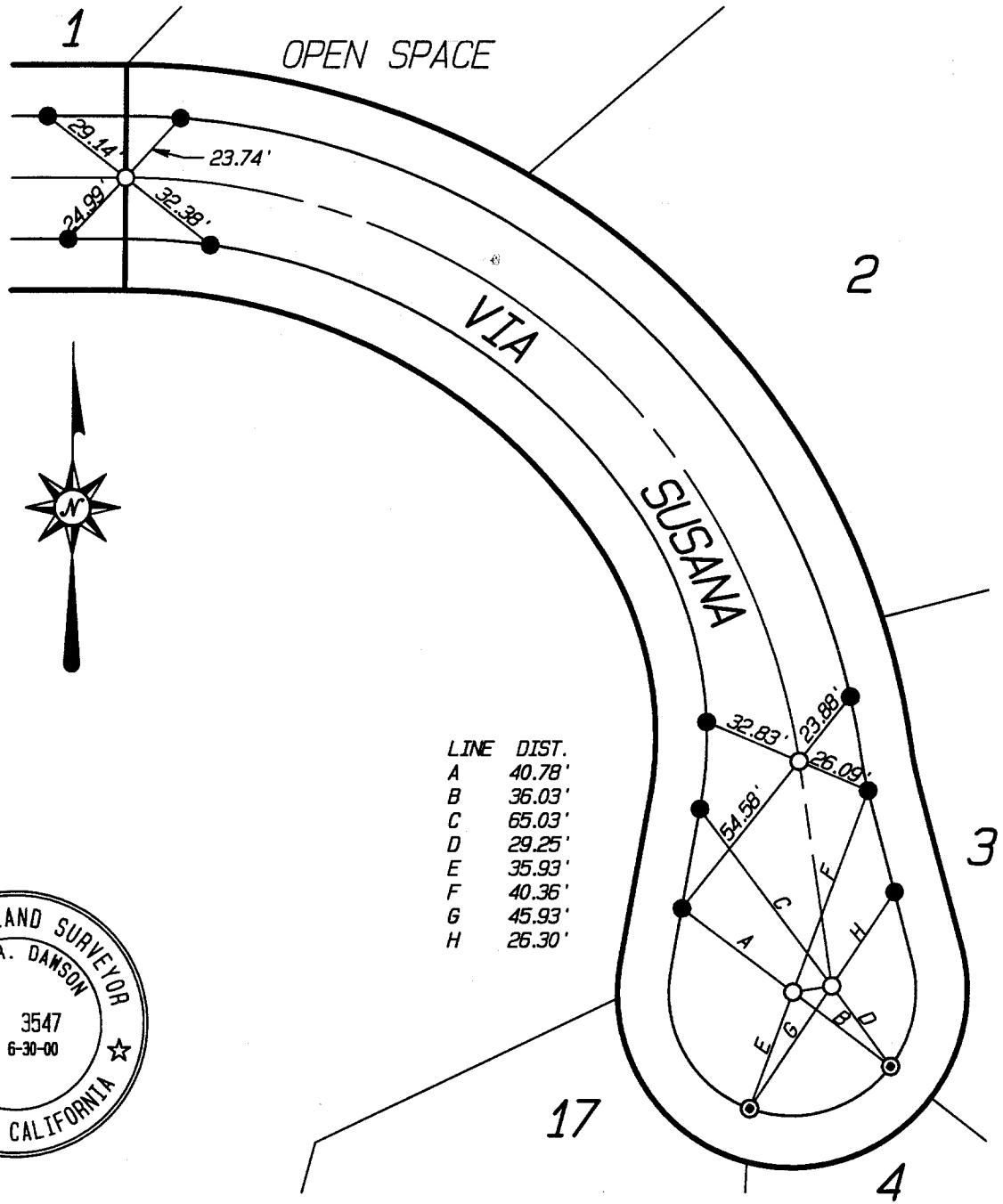


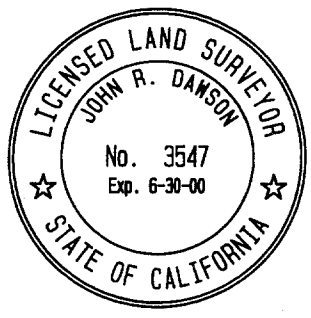
8170-TIP

STREET VIA SUSANA EAST OF TR. BDY X-STREET OFFICE USE ONLY

- INDICATES SET 8" BOAT SPIKE AND L.S. 3547 TAG FLUSH UNLESS OTHERWISE NOTED
 - INDICATES SET NAIL IN TOP OF CURB
 - ⊙ INDICATES SET NAIL AND L.S. 3547 TAG IN CURB ON LOT LINE PROJECTED UNLESS OTHERWISE NOTED
- NOTE: ALL TIES ARE TRANSIT TIES UNLESS OTHERWISE NOTED



LINE	DIST.
A	40.78'
B	36.03'
C	65.03'
D	29.25'
E	35.93'
F	40.36'
G	45.93'
H	26.30'



SCALE: 1" = 50'
 DATE: 1/5/2000
 DR. BY: SRD
 W.O.: 128.07
 F.B.: 1

OFFICIAL TIE PLAT
CITY OF RIVERSIDE

PREPARED BY: **INTEGRA ENGINEERING, INC.**
 LAND SURVEYORS * CIVIL ENGINEERS
 621 E. CARNEGIE DRIVE, #120, SAN BERNARDINO, CA. 92408
 TELEPHONE (909) 383-0200 FAX (909) 383-0203

SHEET 1
 OF 13 SHEETS
 FILE No.: