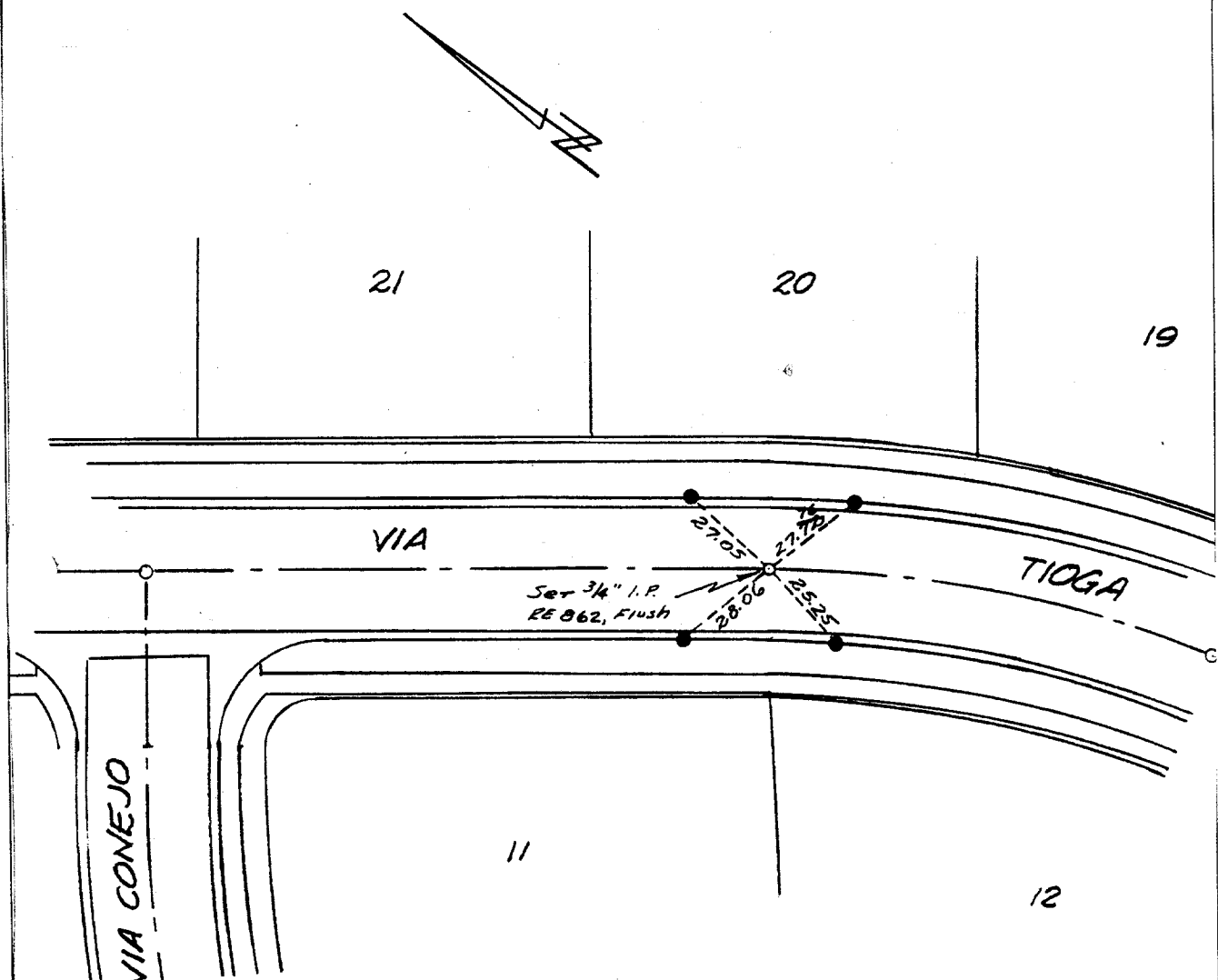


Street: VIA TOGA  
8177.71E  
 ELY X-Street: VIA CONEJO  
 OFFICIAL USE ONLY

VIA TOGA  
 E / VIA CONEJO



● INDICATES TIE POINT,  
 NAIL ON TOP OF CUR

FIELD CHECKED BY F.E.L. 4/10/68 S.P.

TIE SHEET

TRACT 3647 M.B. 57/65

APRIL 1968 SCALE: 1"=40'

J.F. DAVIDSON ASSOCIATES

- ✕ FD. Ramset Nail on T/C
- FD. LD. & TK. on T/C
- FD. "C" Nail on T/C
- Set LD. & TK. on T/C

Scale:  
 Date:  
 Drawn by:  
 W.O.:  
 F.B.:

**OFFICIAL TIE PLAT**  
**CITY OF RIVERSIDE**

*These ties are for the purpose of perpetuating the found monumentation. No claim is made as to the relationship of the points or lines shown hereon to true boundary locations.*

Sheet 1 of 1  
 File No.: