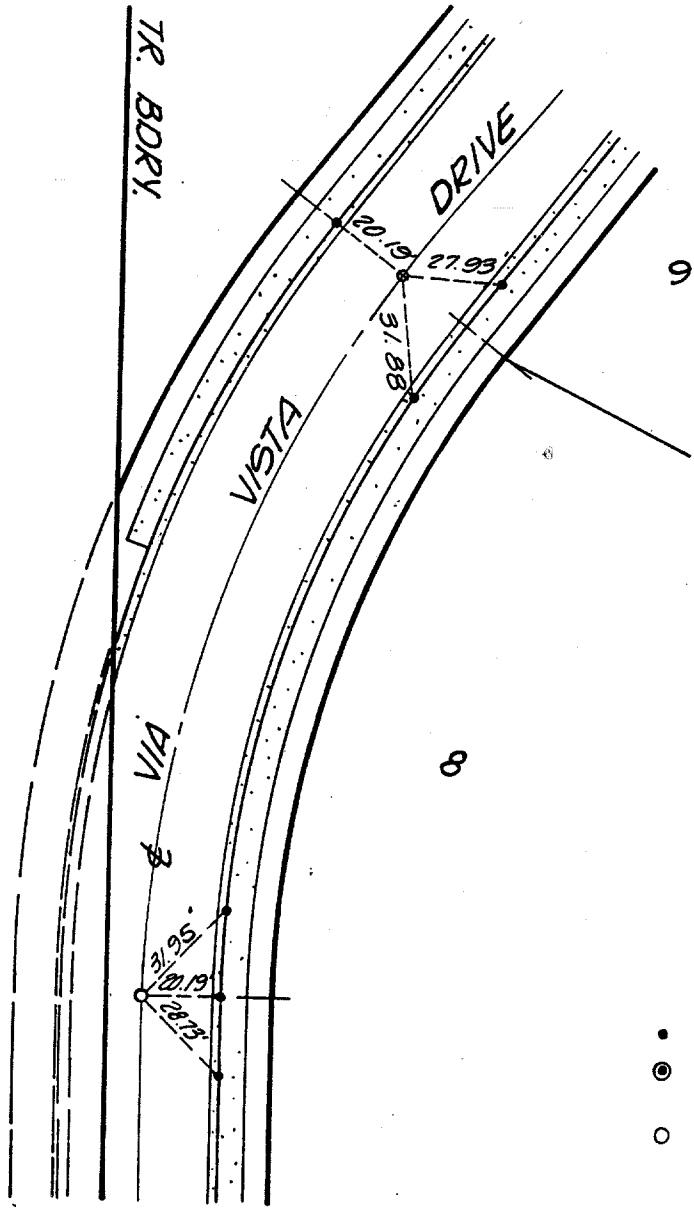


Street: VIA VISTA DRIVE  
8190.71E  
 X-Street: \_\_\_\_\_  
 OFFICIAL USE ONLY



- Set Nail in Curb.
- ⊙ Set Nail and Tag R.C.E. 16056 in Curb.
- Set 1 1/4" O.D. Iron Pipe, Tagged R.C.E. 16056, per Riv. Co. Std. "A" Flush.

TIES MADE DATE: SEPT. 22, 1989

W.O. 227.04 SHEET 2 OF 9 SHEETS

**L A WAINSCOTT & ASSOCIATES**  
 CIVIL ENGINEERS  
 GRAND TERRACE, CALIFORNIA  
 (714) 824-1725

CITY OF RIVERSIDE

**TRACT No 21300**

- ✕ FD. Ramset Nail on T/C
- FD. LD. & TK. on T/C
- FD. "C" Nail on T/C
- Set LD. & TK. on T/C

Scale:  
 Date:  
 Drawn by:  
 W.O.:  
 F.B.:

**OFFICIAL TIE PLAT**  
**CITY OF RIVERSIDE**

*These ties are for the purpose of perpetuating the found monumentation. No claim is made as to the relationship of the points or lines shown hereon to true boundary locations.*

TRACT 21399  
 M.B. 167/7-10  
 Sheet 2 of 9  
 File No.: