

STREET AGATHA LANE X-STREET ATHENA CT OFFICE USE ONLY

82.TIF

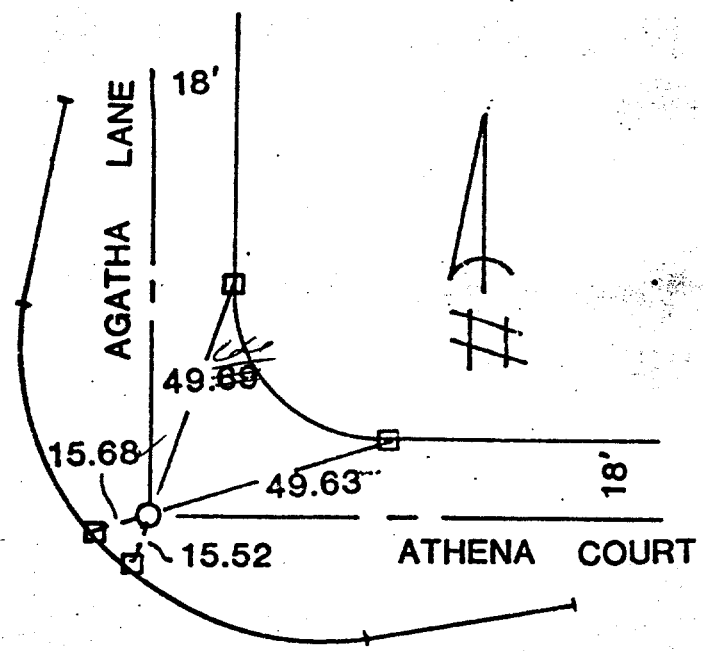
CENTERLINE TIES

TRACT 10071 AUG. 1983

AGATHA LANE & ATHENA COURT

○ Indicates set 1" I.P. tagged RCE 23056 flush

□ Indicates set lead & tack in curb



- ✕ FD. Ramset Nail on T/C
- FD. LD. & TK. on T/C
- FD. "C" Nail on T/C
- SET LD. & TK. On T/C

SCALE:  
 DATE:  
 DR. BY:  
 W.O.:  
 F.B.:

**OFFICIAL TIE PLAT**  
 CITY OF RIVERSIDE

*These ties are for the purpose of perpetuating the found monumentation. No claim is made as to the relationship of the points or lines shown hereon to true boundary locations.*

SHEET

OF SHEETS

FILE NO.: