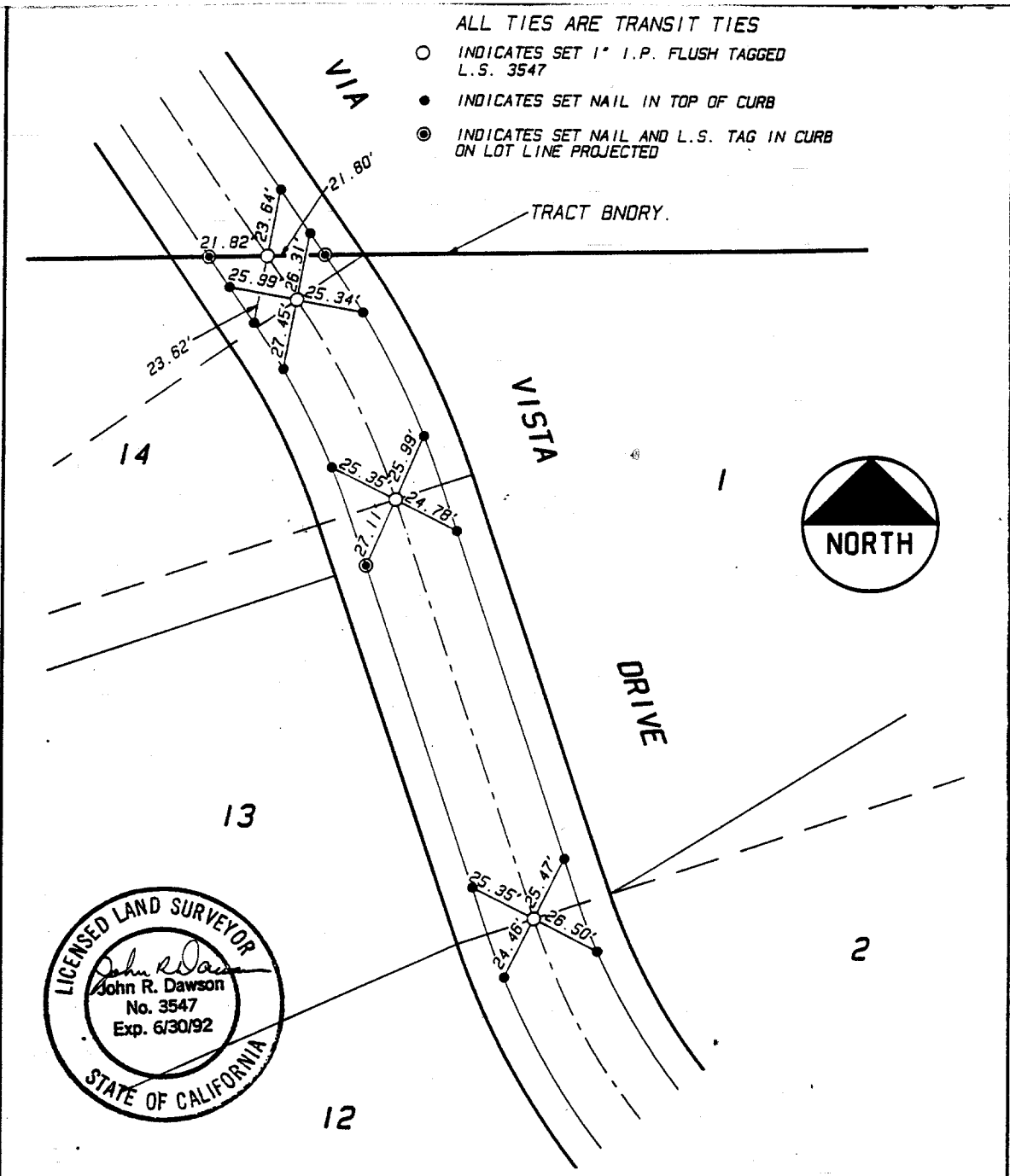


Street: **VIA VISTA DRIVE** NLY X-Street: **CORINTHIAN WAY**
8201-TIF OFFICIAL USE ONLY



- ALL TIES ARE TRANSIT TIES
- INDICATES SET 1" I.P. FLUSH TAGGED L.S. 3547
 - INDICATES SET NAIL IN TOP OF CURB
 - ⊙ INDICATES SET NAIL AND L.S. TAG IN CURB ON LOT LINE PROJECTED



PLAT PREPARED BY:
INTEGRA ENGINEERING, INC.
 LAND SURVEYORS * CIVIL ENGINEERS
 621 E. CARNEGIE DRIVE, #120, SAN BERNARDINO, CA. 92408
 TELEPHONE (714) 383-0200 FAX (714) 383-0203

CITY OF RIVERSIDE
 MONUMENTATION TIE SHEET
TRACT No. 24082-1
 RECORDED IN M.B. 233/98-99

- ⊗ FD. Ramset Nail on T/C
- FD. LD. & TK. on T/C
- FD. "C" Nail on T/C
- Set LD. & TK. on T/C

Scale:
 Date:
 Drawn by:
 W.O.:
 F.B.:

OFFICIAL TIE PLAT
CITY OF RIVERSIDE

These ties are for the purpose of perpetuating the found monumentation. No claim is made as to the relationship of the points or lines shown hereon to true boundary locations.

TRACT 24082-1
 M.B. 233/98-99
 Sheet 4 of 5
 File No.:

N.L.T. OF CORINTHIAN