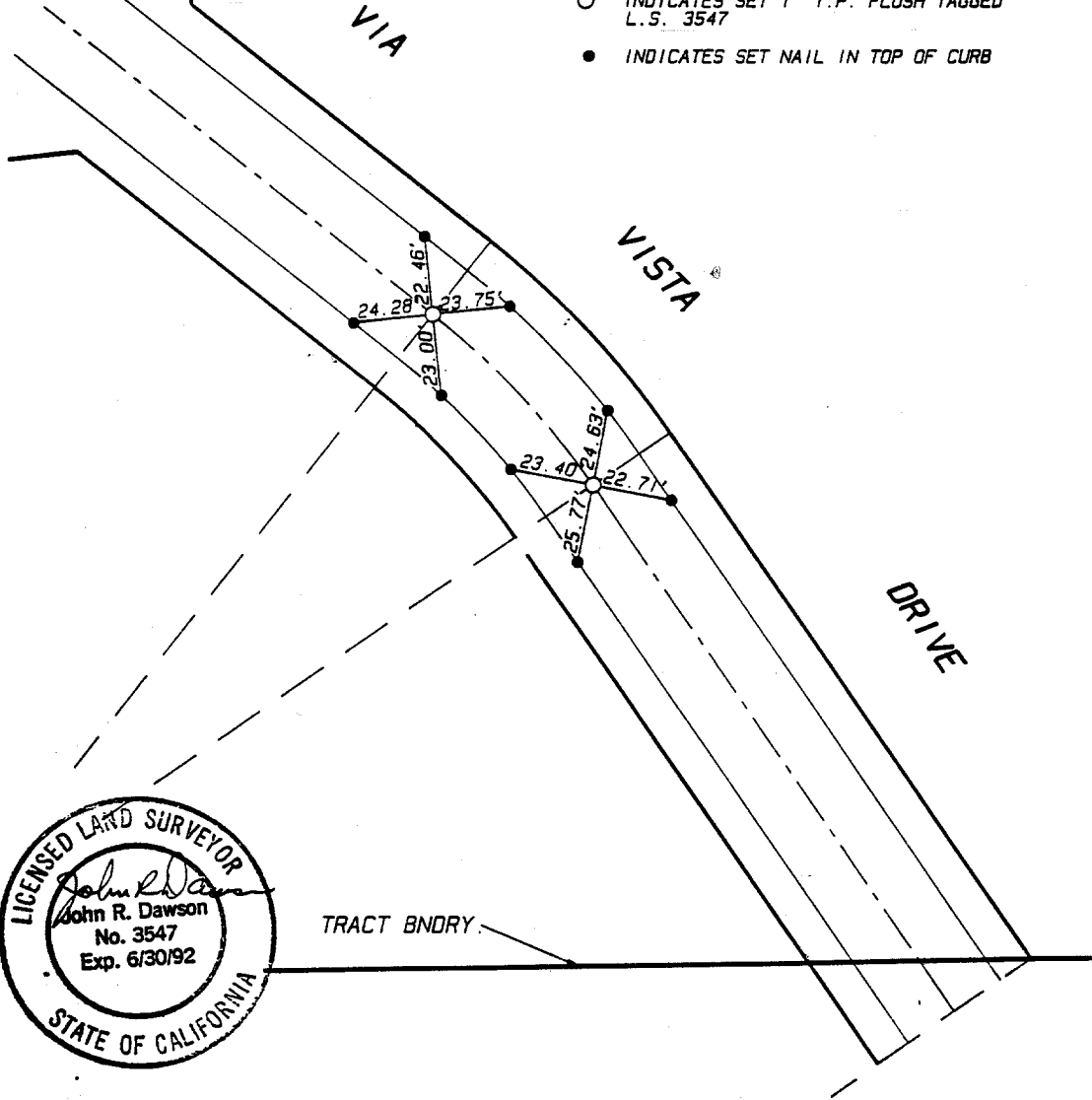


Street: VIA VISTA DRIVE NLY X-Street: CORINTHIAN WAY  
8202.71E OFFICIAL USE ONLY



- ALL TIES ARE TRANSIT TIES
- INDICATES SET 1" I.P. FLUSH TAGGED L.S. 3547
  - INDICATES SET NAIL IN TOP OF CURB



PLAT PREPARED BY:  
**INTEGRA ENGINEERING, INC.**  
 LAND SURVEYORS \* CIVIL ENGINEERS  
 621 E. CARNEGIE DRIVE, #120, SAN BERNARDINO, CA. 92408  
 TELEPHONE (714) 383-0200 FAX (714) 383-0203

**CITY OF RIVERSIDE**  
 MONUMENTATION TIE SHEET  
**TRACT No. 24082-1**  
 RECORDED IN M.B. 233/98-99

NLY OF CORINTHIAN WAY

- ✕ FD. Ramset Nail on T/C
- FD. LD. & TK. on T/C
- FD. "C" Nail on T/C
- Set LD. & TK. on T/C

Scale:  
 Date:  
 Drawn by:  
 W.O.:  
 F.B.:

## OFFICIAL TIE PLAT

### CITY OF RIVERSIDE

*These ties are for the purpose of perpetuating the found monumentation. No claim is made as to the relationship of the points or lines shown hereon to true boundary locations.*

Sheet **4** of **5**  
 File No.: