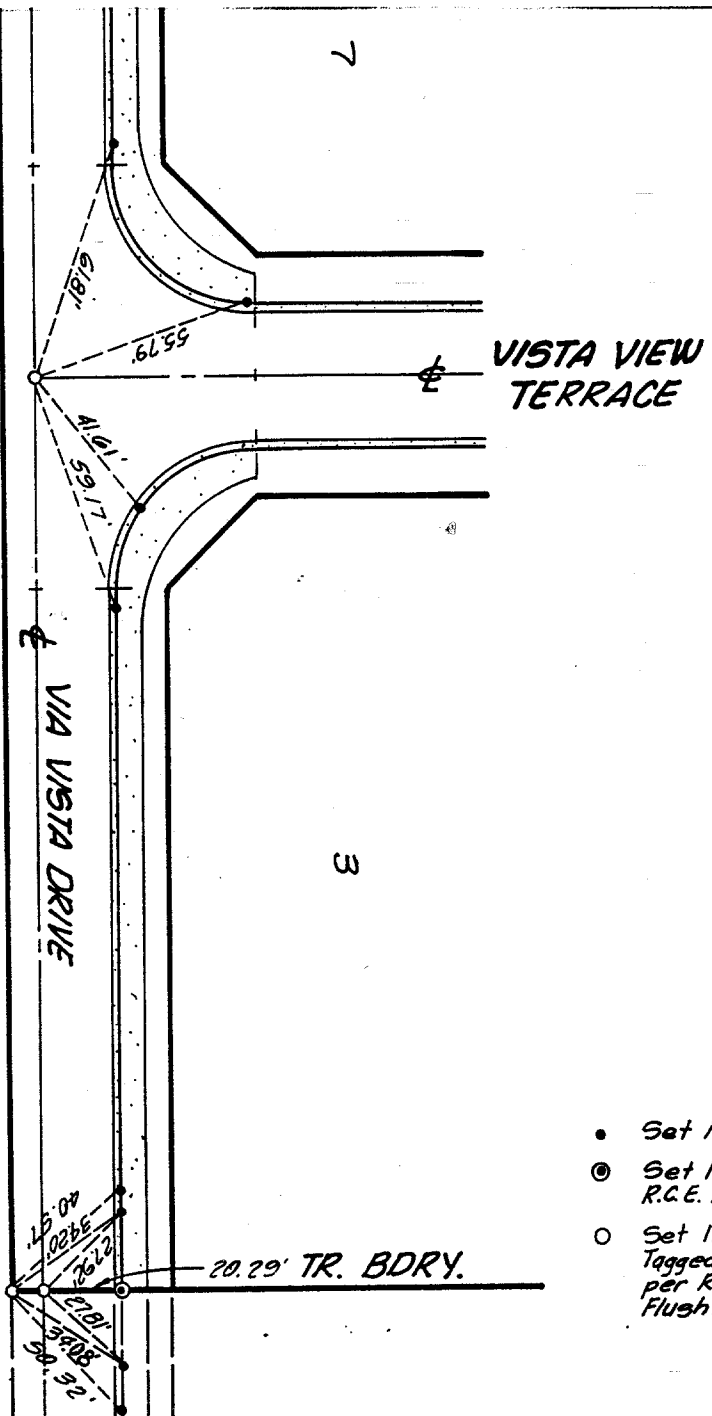


Street: VIA VISTA DRIVE 8213.71E  
 X-Street: VISTA VIEW TERRACE  
 OFFICIAL USE ONLY



- Set Nail in Curb.
- ⊙ Set Nail and Tag R.C.E. 16056 in Curb.
- Set 1 1/4" O.D. Iron Pipe, Tagged R.C.E. 16056, per Riv. Co. Std. "A" Flush.

TIES MADE DATE: SEPT. 22, 1989 W.O. 227.04 SHEET 3 OF 9 SHEETS

L A WAINSCOTT & ASSOCIATES CIVIL ENGINEERS CITY OF RIVERSIDE TRACT N. 01000

- ✕ FD. Ramset Nail on T/C
- FD. "C" Nail on T/C
- FD. LD. & TK. on T/C
- Set LD. & TK. on T/C

Scale:	<b>OFFICIAL TIE PLAT</b> <b>CITY OF RIVERSIDE</b> <i>These ties are for the purpose of perpetuating the found monumentation. No claim is made as to the relationship of the points or lines shown hereon to true boundary locations.</i>	TRACT 21399
Date:		MB 167/7-10
Drawn by:		Sheet 3 of 9
W.O.:		File No.:
F.B.:		