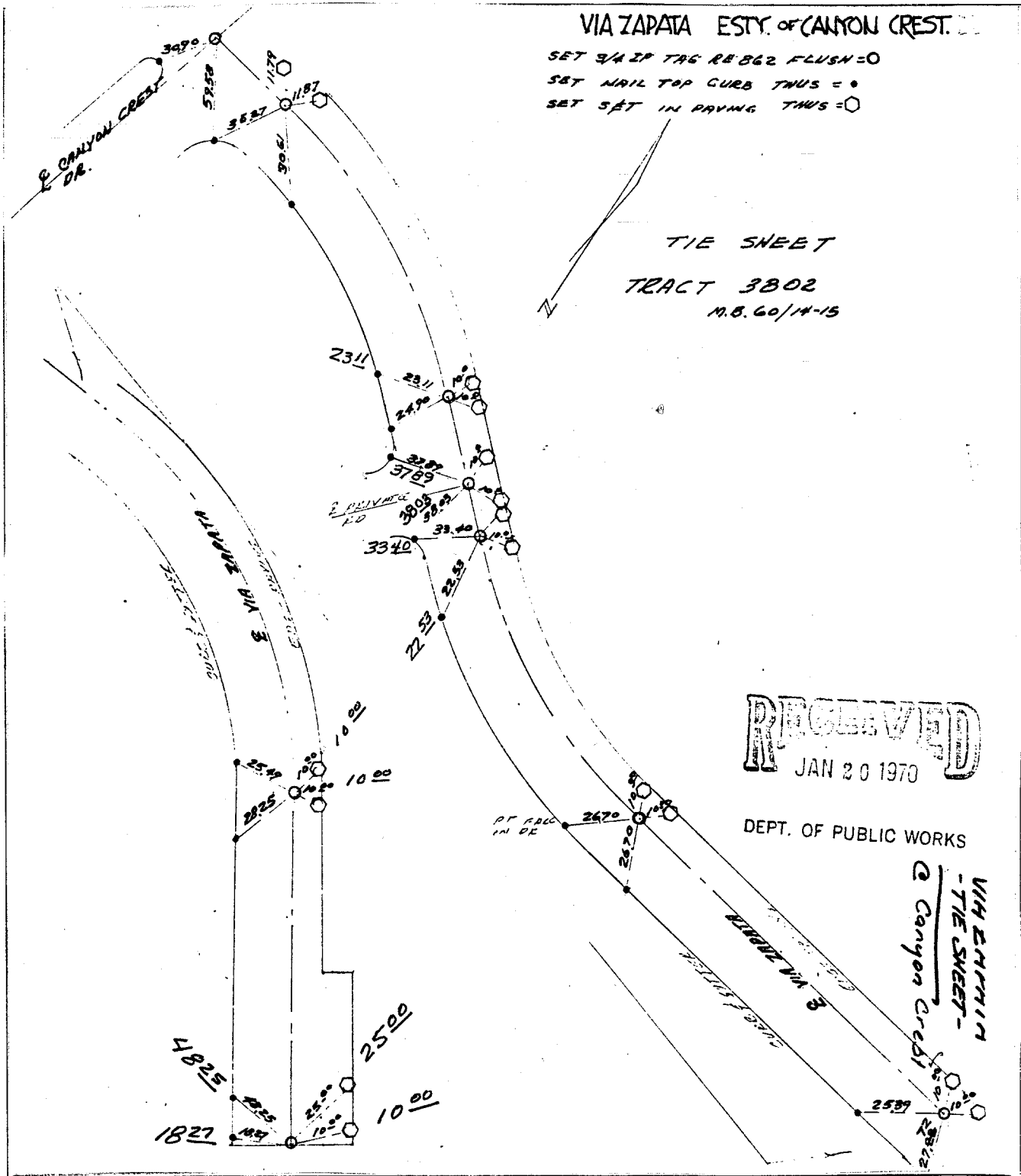


Street: VIA ZAPATA
8217. TIF
 ELY X-Street: CANYON CREST DR.
 OFFICIAL USE ONLY



VIA ZAPATA ESTY. OF CANYON CREST.

SET 3/4 IF TAG RE 862 FLUSH = O
 SET NAIL TOP CURB THUS = O
 SET SET IN PAVING THUS = O

TIE SHEET
 TRACT 3802
 M.B. 60/14-15

RECEIVED
 JAN 20 1970

DEPT. OF PUBLIC WORKS

VIA ZAPATA
 - TIE SHEET -
 Canyon Crest

- ✕ FD. Ramset Nail on T/C
- FD. LD. & TK. on T/C
- FD. "C" Nail on T/C
- Set LD. & TK. on T/C

Scale:
 Date:
 Drawn by:
 W.O.:
 F.B.:

OFFICIAL TIE PLAT
CITY OF RIVERSIDE

These ties are for the purpose of perpetuating the found monumentation. No claim is made as to the relationship of the points or lines shown hereon to true boundary locations.

TRACT 3802
 MB 60/14-15
 Sheet 1 of 1
 File No.: