

Street:

VICKERS DRIVE
8220.77E

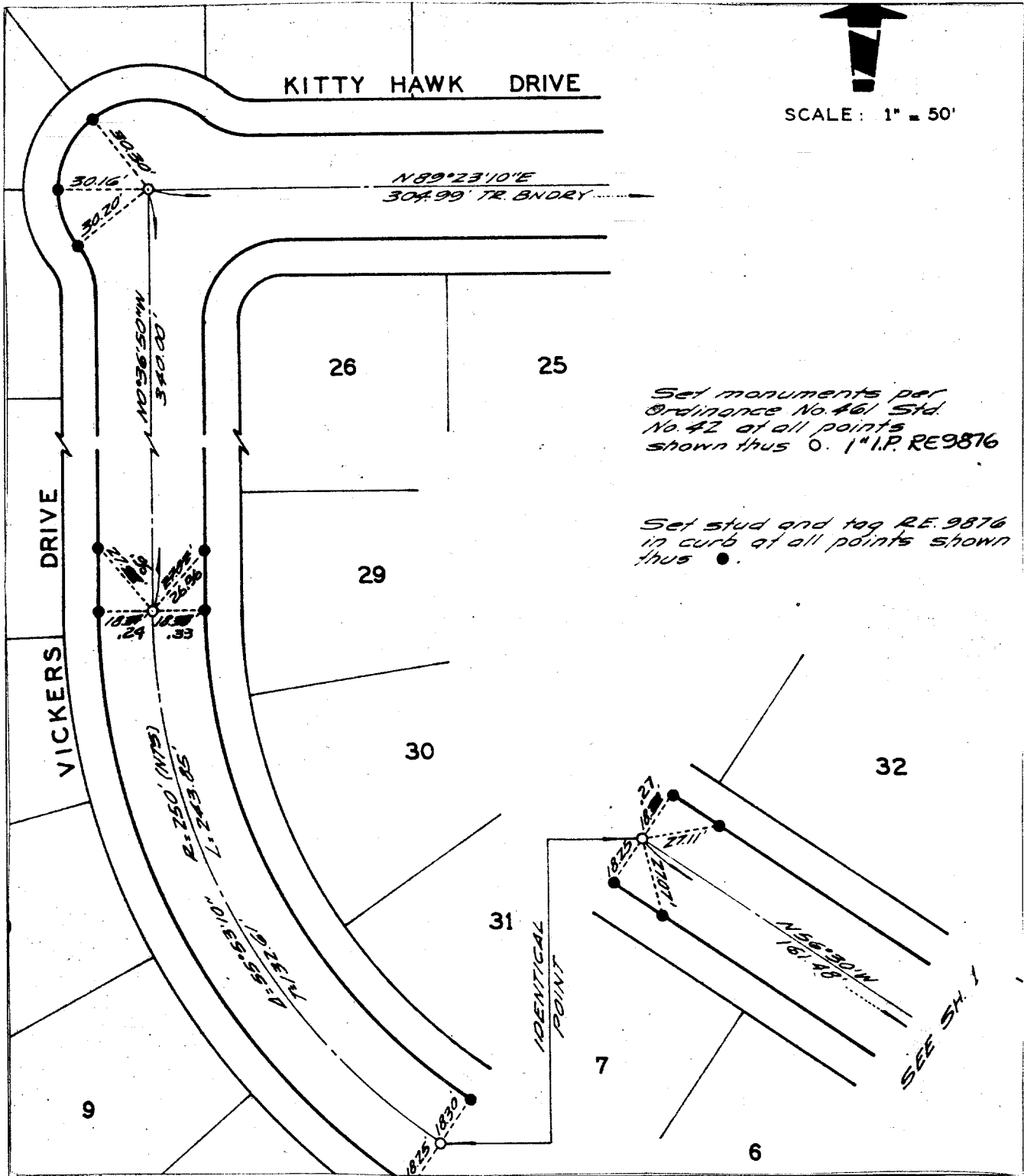
OFFICIAL USE ONLY

X-Street:

KITTY HAWK DR.



SCALE: 1" = 50'



Set monuments per Ordinance No. 461 Std. No. 42 at all points shown thus O. I.P. RE9876

Set stud and top RE. 9876 in curb at all points shown thus ●.

- ✕ FD. Ramset Nail on T/C
- FD. LD. & TK. on T/C
- FD. "C" Nail on T/C
- Set LD. & TK. on T/C

Scale:
Date:
Drawn by:
W.O.: 63-344
F.B.: 559

OFFICIAL TIE PLAT
CITY OF RIVERSIDE

These ties are for the purpose of perpetuating the found monumentation. No claim is made as to the relationship of the points or lines shown hereon to true boundary locations.

TRACT 3766

Sheet 2 of 3

File No.: