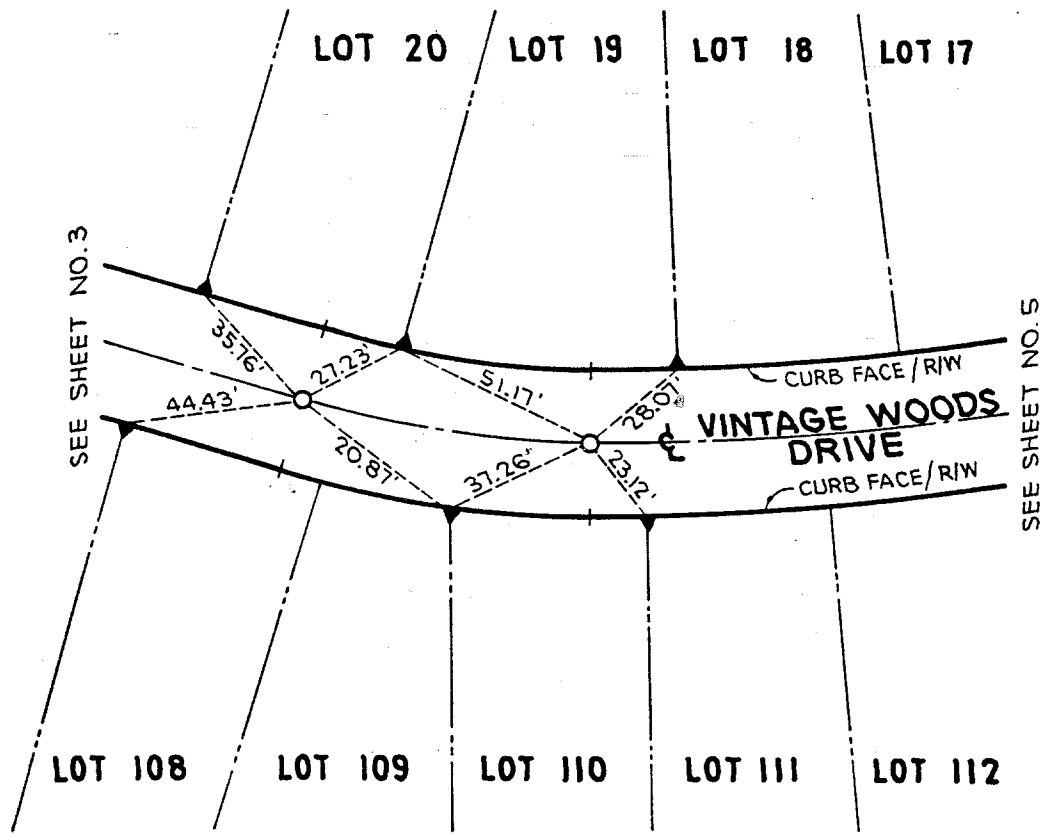


Street: **VINTAGE WOODS DRIVE (E/LY) X-Street: SEA VISTA DRIVE**
8237.71E
 OFFICIAL USE ONLY




SEE SHEET NO.3

SEE SHEET NO.5

VINTAGE WOODS DR E/LY OF SEA VISTA DR.

LEGEND
 ● = SET LEAD & TACK
 ▲ = LEAD & TAG "R.C.E. 29243"
 ○ = SET 1" IRON PIPE WITH PLASTIC PLUG STAMPED "R.C.E. 29243"

SCALE: 1" = 40'

CITY OF RIVERSIDE	⊕ SURVEY TIE	TRACT NO. 27289	
 CHARCHOL/HARTMAN & ASSOC. PLANNING • ENGINEERING • SURVEYING <small>27127 CALLE ARROYO • SUITE 1004 SAN JUAN CAPISTRANO, CALIFORNIA 92675 • (714) 661-6695</small>	STREET / MONUMENT NO. VINTAGE WOODS DRIVE		
	CHARLES O. HARTMAN, R.C.E. 29243	DRAWN	
DATE OF SURVEY: NOV., 1995	DATE	REV.	DATE BY
	APP'D.	PAGE 4 OF 11	

✕ FD. Ramset Nail on T/C ● FD. LD. & TK. on T/C
 ■ FD. "C" Nail on T/C ○ Set LD. & TK. on T/C

Scale:
 Date:
 Drawn by:
 W.O.:
 F.B.:

OFFICIAL TIE PLAT
CITY OF RIVERSIDE
These ties are for the purpose of perpetuating the found monumentation. No claim is made as to the relationship of the points or lines shown hereon to true boundary locations.

Sheet 4 of 11
 File No.: