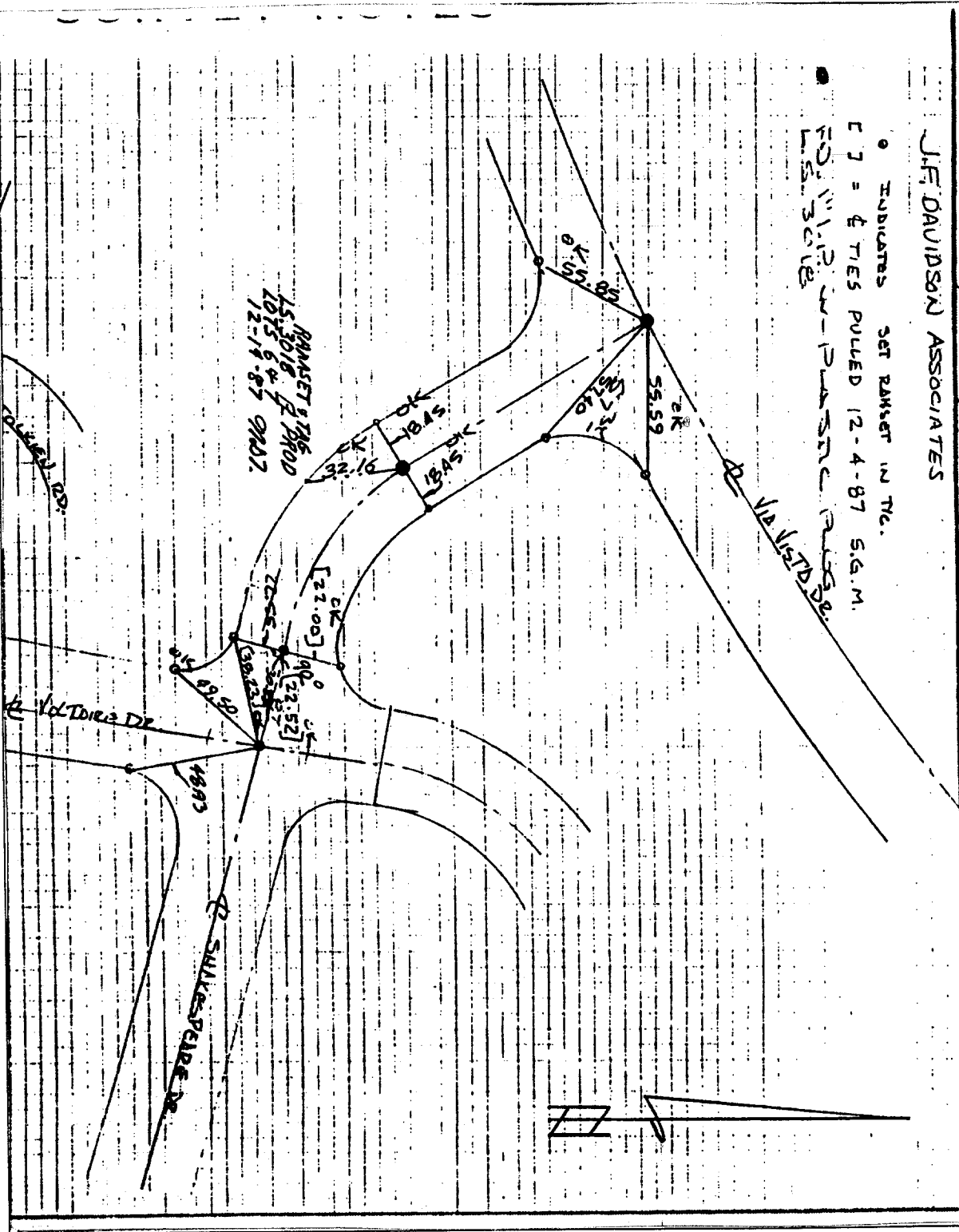


Street: VOLTAIRE DRIVE X-Street: SHAKESPEARE DRIVE
8268. T/F OFFICIAL USE ONLY

SURVEY OF 4 Tics TR 20312-1 W.O.No. 9219 DATE 5-29-87
 OR CONCORDIA REF. A.M.
 SURVEY PARTY BARBARA SULLARD, CLEVELAND

J.F. DAVIDSON ASSOCIATES

• INDICATES SET RAMSET IN T/C.
 [] = 4 TIES PULLED 12-4-87 5:45 A.M.
 • FOUND IN 12-4-87 PULLED IN 12-4-87



- × FD. Ramset Nail on T/C
- FD. LD. & TK. on T/C
- FD. "C" Nail on T/C
- Set LD. & TK. on T/C

OFFICIAL TIE PLAT
CITY OF RIVERSIDE

These ties are for the purpose of perpetuating the found monumentation. No claim is made as to the relationship of the points or lines shown hereon to true boundary locations.

Scale:
 Date:
 Drawn by:
 W.O.:
 F.B.: 9219/543

Sheet 1 of 1
 File No.: