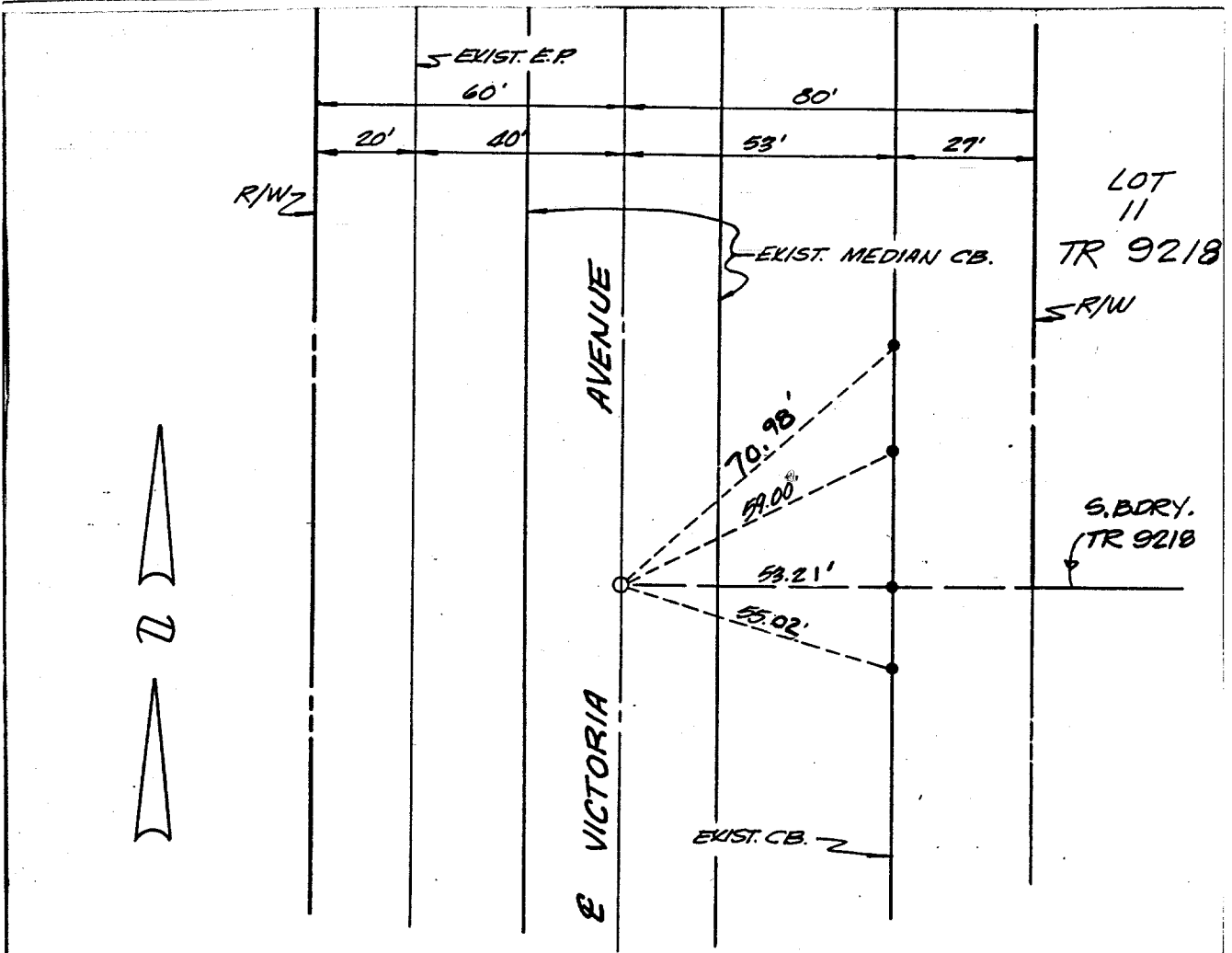


Street: **VICTORIA AVE** **8284.71E**
 N/O X-Street: **CENTRAL AVE**
 OFFICIAL USE ONLY



- SET 1" IRON PIPE TAGGED R.C.E. 14814, FLUSH, UNLESS OTHERWISE NOTED.
- INDICATES NAIL & TAG (R.C.E. 14814) IN TOP OF CURB, UNLESS OTHERWISE NOTED.

MADOLE & ASSOCIATES
 1820 E. 16th ST.
 SANTA ANA, CALIF.
 TEL. 835-2518

MONUMENT TIES
 FOR TR. 9218

SHEET NO. 2 OF 4
 DATE: JULY 1983
 SCALE: 1"=30'

- × FD. Ramset Nail on T/C
- FD. LD. & TK. on T/C
- FD. "C" Nail on T/C
- Set LD. & TK. on T/C

Scale:
 Date:
 Drawn by:
 W.O.:
 F.B.:

OFFICIAL TIE PLAT
CITY OF RIVERSIDE

These ties are for the purpose of perpetuating the found monumentation. No claim is made as to the relationship of the points or lines shown hereon to true boundary locations.

Sheet 1 of 1
 File No.: