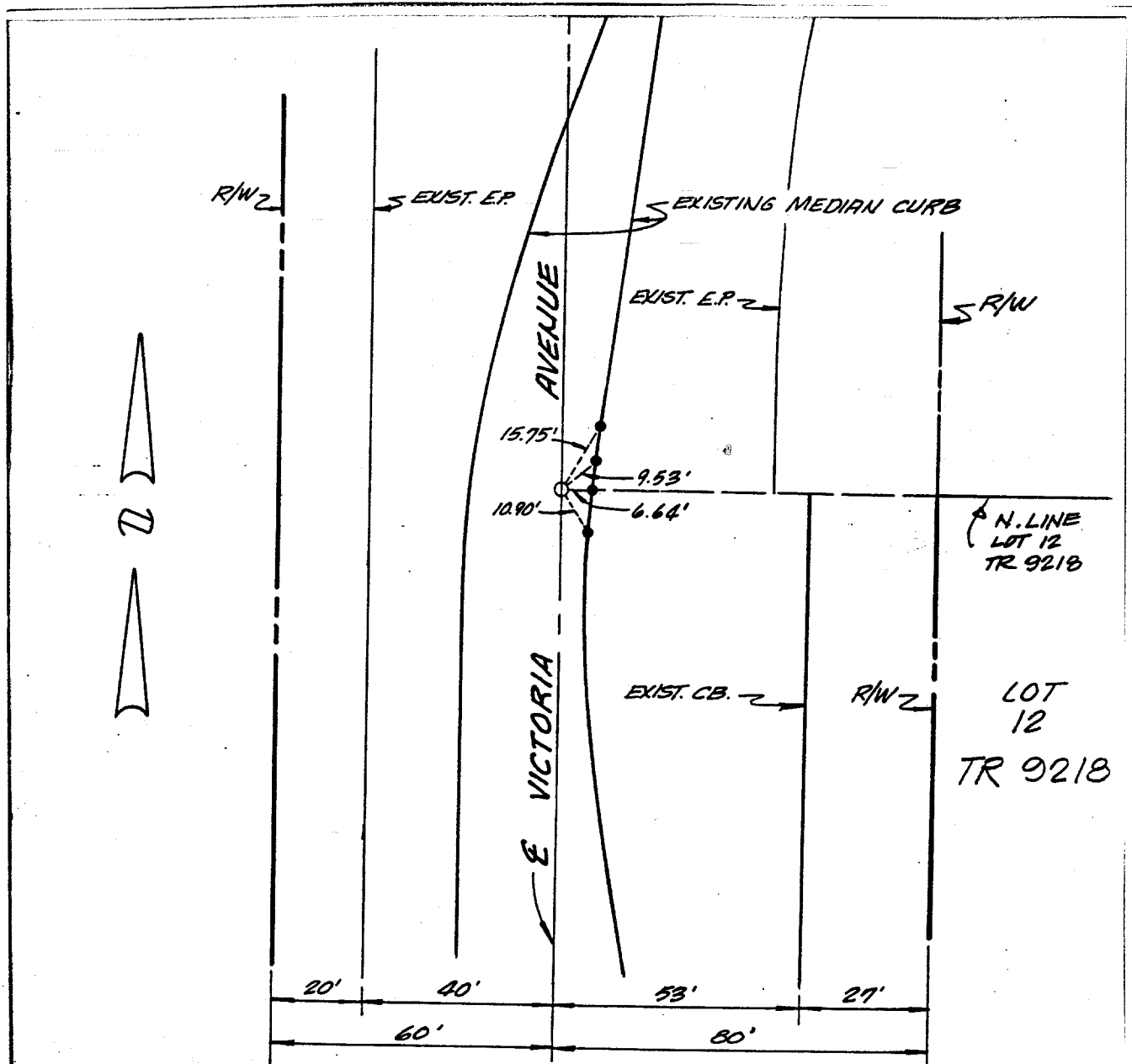


Street: **VICTORIA AVE**  
**8285.71E**  
 N/O X-Street: **CENTRAL AVE**  
 OFFICIAL USE ONLY



SET 1" IRON PIPE TAGGED R.C.E. 14814, FLUSH, UNLESS OTHERWISE NOTED.  
 INDICATES NAIL & TAG (R.C.E. 14814) IN TOP OF CURB, UNLESS OTHERWISE NOTED.

MADOLE & ASSOCIATES 1820 E. 16th ST. SANTA ANA, CALIF. <small>914-895-9648</small>	<b>MONUMENT TIES</b> FOR TR. <u>9218</u>	SHEET NO. <u>1</u> OF <u>4</u> DATE: <u>JULY 1983</u> SCALE: <u>1"=30'</u>
---	---	--

- 
- × FD. Ramset Nail on T/C      ● FD. LD. & TK. on T/C  
 ■ FD. "C" Nail on T/C      ○ Set LD. & TK. on T/C

Scale:	<h2 style="margin: 0;">OFFICIAL TIE PLAT</h2> <h3 style="margin: 0;">CITY OF RIVERSIDE</h3>	
Date:		
Drawn by:	<i>These ties are for the purpose of perpetuating the found monumentation. No claim is made as to the relationship of the points or lines shown hereon to true boundary locations.</i>	Sheet 1 of 1
W.O.:		File No.:
F.B.:		