

MASSACHUSETTS

X-STREET
OFFICE USE ONLY

AGATHA LANE

STREET

83.T:1F

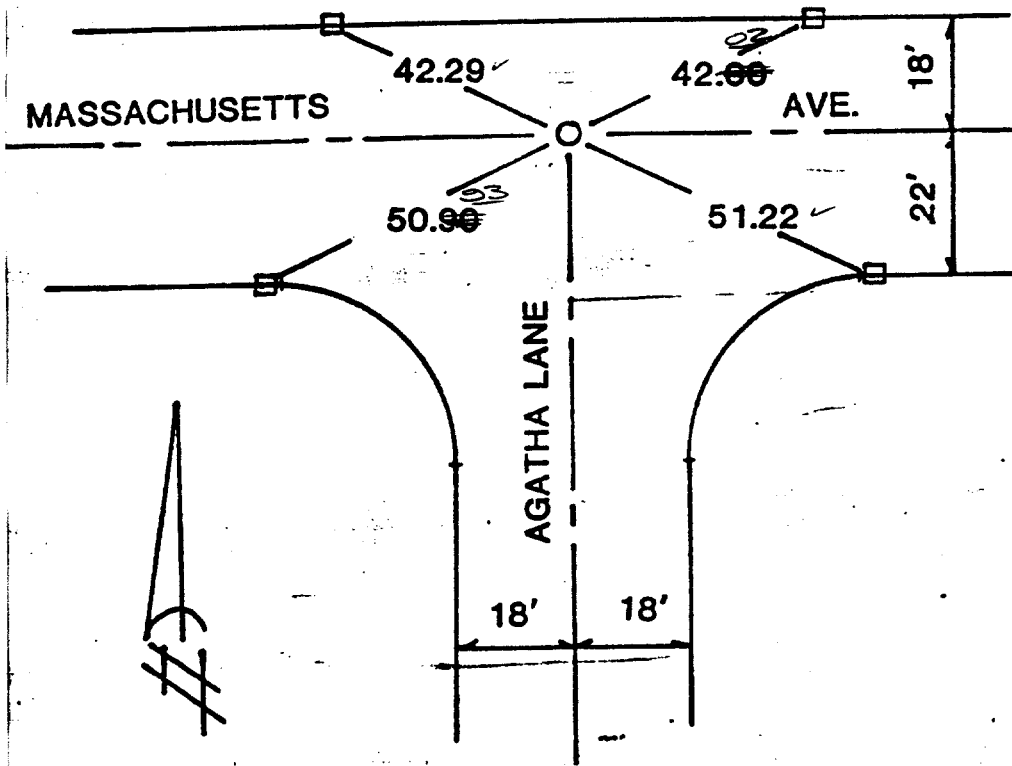
CENTERLINE TIES

TRACT 10071-1

AUG. 1983

MASSACHUSETTS AVE & AGATHA LANE

- Indicates set 1" I.P. tagged RCE 23056 flush
- Indicates set lead & tack in curb



- × FD. Ramset Nail on T/C
- FD. "C" Nail on T/C

- FD. LD. & TK. on T/C
- SET LD. & TK. On T/C

SCALE:

DATE:

DR. BY:

W.O.:

F.B.:

OFFICIAL TIE PLAT CITY OF RIVERSIDE

These ties are for the purpose of perpetuating the found monumentation. No claim is made as to the relationship of the points or lines shown hereon to true boundary locations.

SHEET

OF SHEETS

FILE NO.: